

Washington Integrated Student Supports Protocol

STATE BOARD OF EDUCATION MEETING MAY 10 – 11, 2017

ANDREA COBB, EXECUTIVE DIRECTOR | CENTER FOR THE
IMPROVEMENT OF STUDENT LEARNING



CISL's Mission

To ***connect*** people to the research and information they need to eliminate educational opportunity gaps and improve learning and teaching in Washington State.

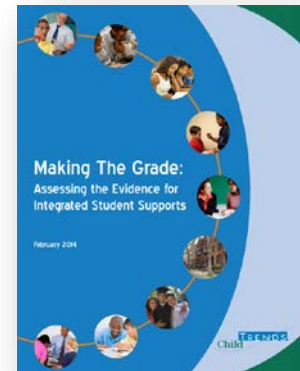


Washington Integrated Student Supports Protocol (WISSP) - Overview

4SHB 1541 created the **Washington Integrated Student Supports Protocol (WISSP)** and workgroup to make policy recommendations for implementation

Based on recommendations of the Educational Opportunity Gap Oversight and Accountability Committee 2016 (EOGOAC)

Informed by a synthesis of the evidence supporting ISS produced by Child Trend (2014)



Purpose of the WISSP

Support a [school-based approach](#) to promoting the success of all students by coordinating academic and nonacademic supports to reduce barriers to academic achievement and educational attainment;

Fulfill a vision of public education where educators focus on education, students focus on learning, and auxiliary supports enable teaching and learning to occur unimpeded;

Encourage the creation, expansion, and quality improvement of community-based supports that can be integrated into the academic environment of schools and school districts;

Increase public awareness of the evidence showing that academic outcomes are a result of both academic and nonacademic factors; and

Support statewide and local organizations in their efforts to provide leadership, coordination, technical assistance, professional development, and advocacy to implement high-quality, evidence-based, student-centered, coordinated approaches throughout the state.

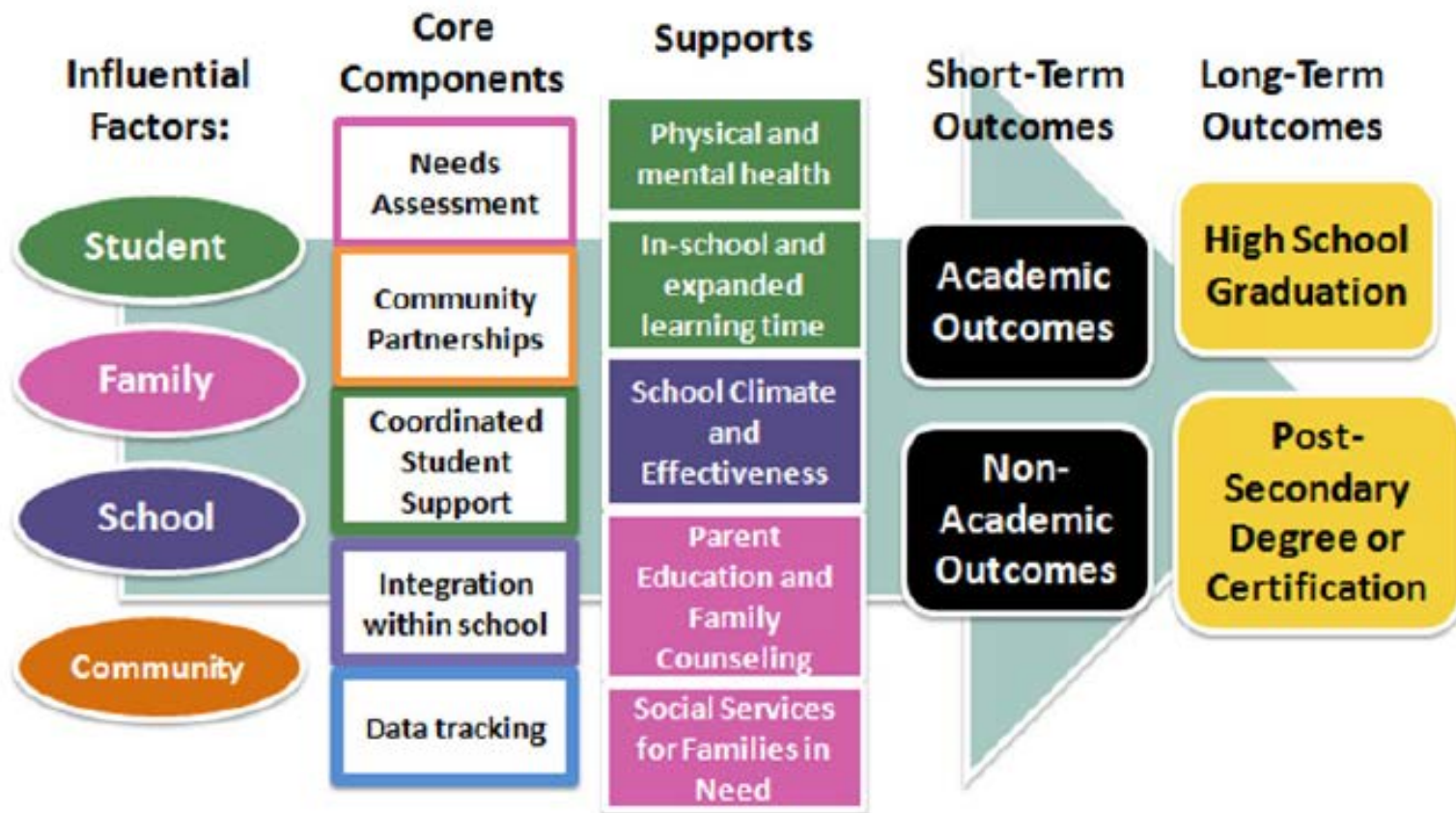


What are Integrated Student Supports

“Integrated Student Supports (ISS) are a school-based approach to promoting students’ academic success by developing or securing and coordinating supports that target academic and non-academic barriers to achievement”
(Child Trends, 2014).



ISS Theory of Change



Components of the WISSP Framework

Needs
Assessment

Integration &
Coordination

Community
Partnerships

Data Driven



ISS Workgroup's Role

Determine how to best implement the WISSP framework throughout the state

Recommend to the Legislature, policies that need to be adopted or revised in order to support implementation across the state

- Preliminary Report: October 1, 2016
- Final Report: October 1, 2017



Name	Organization	Role
Aaron Leavell	Bremerton School District	Superintendent
Andrew Cain	Cedar Heights Middle School	Principal
David Beard	School's Out WA	Policy and Advocacy Director
Dr. Bridget Walker	Bridget Walker PhD Consulting	Consultant, Trainer and Coach
Dr. Tammy Campbell	Federal Way School District	Superintendent
Emily Weber	Tumwater Hill Elementary	Counselor
Erin Romanuk	WA Assoc. of School Social Workers	President
Jan Wichert	Vancouver Housing Authority	Director of Employee and Resident Svs
Ken Schutz	Ferris High School	Principal
Laura Conklin	Mary M. Knight High School	Counselor
Marisa Castello	Woodbrook Middle School	Counselor
Melinda Giovengo	YouthCare	Executive Director
Mike Hickman	ESD 113	Assistant Superintendent
Susan Richards	Communities in Schools - WA	Executive Director
Taj Jensen	Mann Elementary	Principal
Terry Derrig	Lindbergh High School	CTE Worksite Learning Coord.



What we are learning about Integrated Student Supports in Washington Schools



OFFICE OF SUPERINTENDENT OF PUBLIC INSTRUCTION

5/8/2017

10

Efforts to Understanding Integrated Student Supports in Washington

JLARC Mental Health Inventory

District and ESD Integrated Student Support Survey

Child Trends Interviews and Case Studies with Principals

OSPI work within districts to implement initiatives, frameworks, or programs

- Project AWARE
- MTSS (PBIS, RTI)

ESD Student Supports Staff

State and Regional Interagency Collaborations



OFFICE OF SUPERINTENDENT OF PUBLIC INSTRUCTION

5/8/2017

Continuum of Integrated Student Supports Models

Child Trends ISS Models – such as Communities in Schools (CIS)

Integrated Student Supports Services Model – ESA Staff (nurses, counselors, social workers, psychologists)

School-based Services

Wraparound Services

Full Service Community Schools Model

School-Linked Services Model

Family Resource Centers

Multi-tiered System of Supports



OFFICE OF SUPERINTENDENT OF PUBLIC INSTRUCTION

5/8/2017

12

Next Steps

Continue to engage with districts, principals, ESD staff and families about the learning supports students need to be successful

Synthesize our learning

Operationalize each of the components of the WISSP framework into a usable tool

Vet the WISSP with a broad set of stakeholders

Facilitate the development of the ISS workgroup's final policy recommendations

Finalize the WISSP and submit recommendations to the legislature by October 2017

