

Youth Employment in Washington State

Dave Wallace

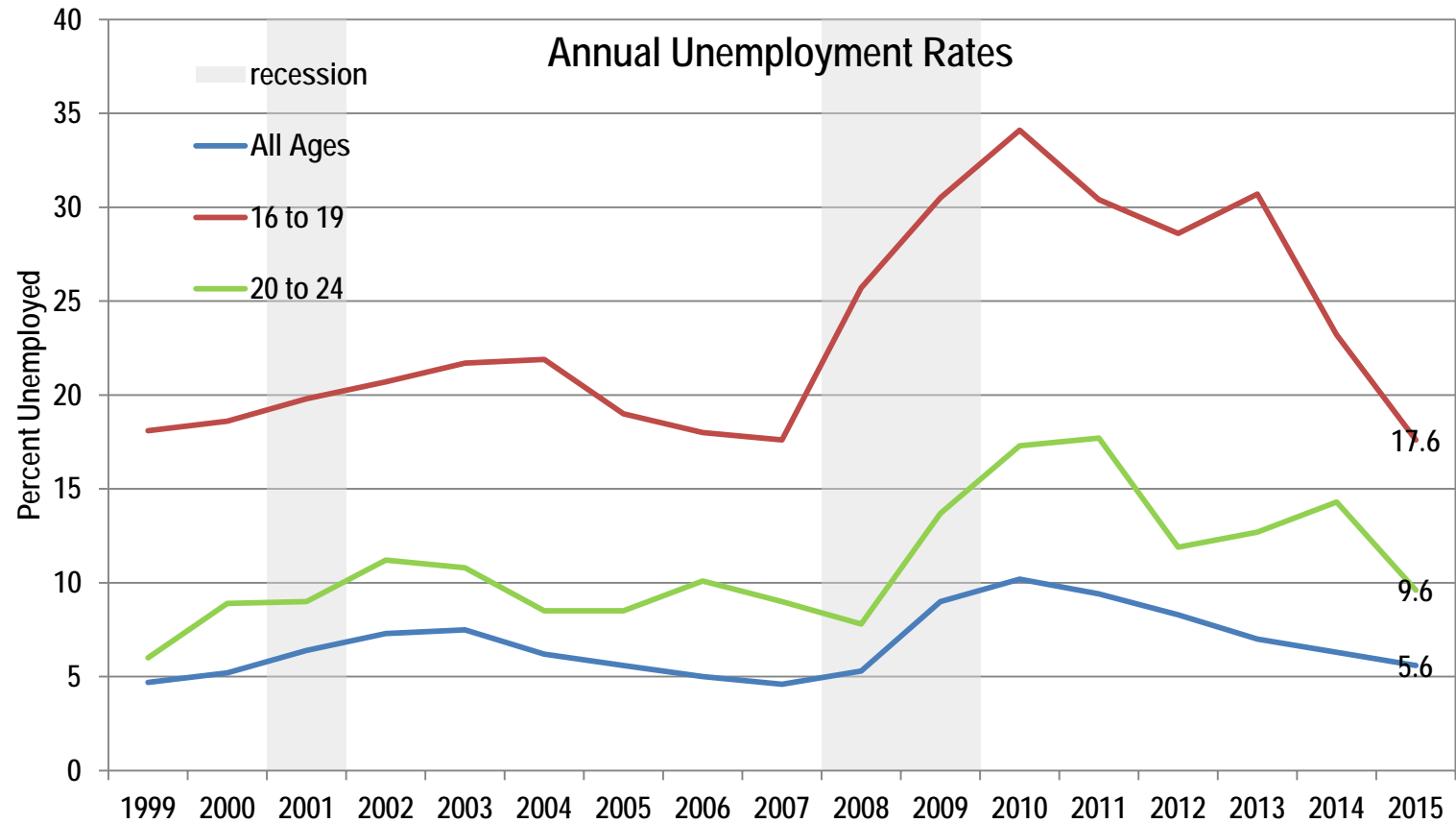
WTECB and SBE Joint Board Meeting

January 11th, 2017

Workforce Training and
Education Coordinating Board

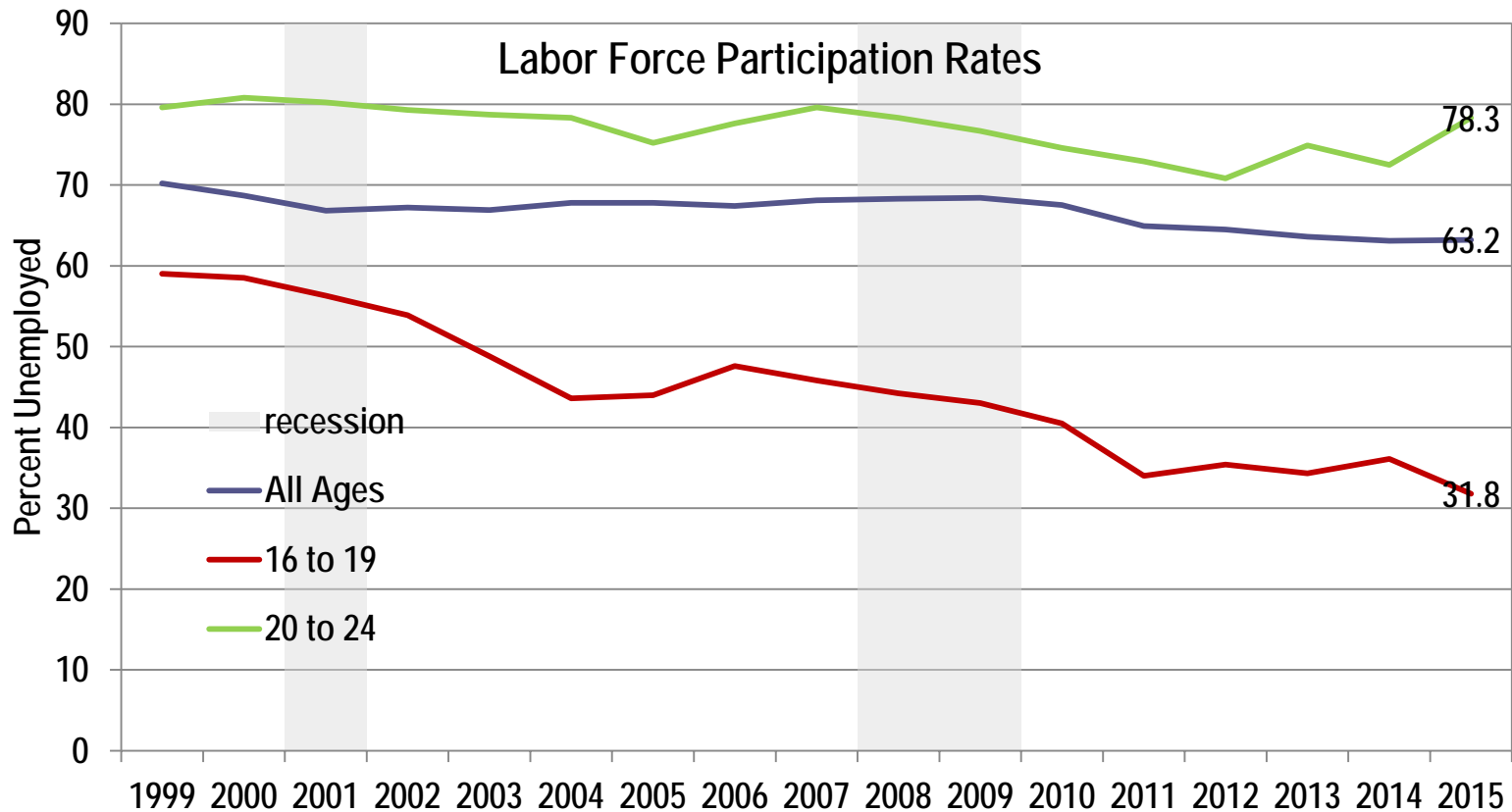


Youth are particularly susceptible to recessions



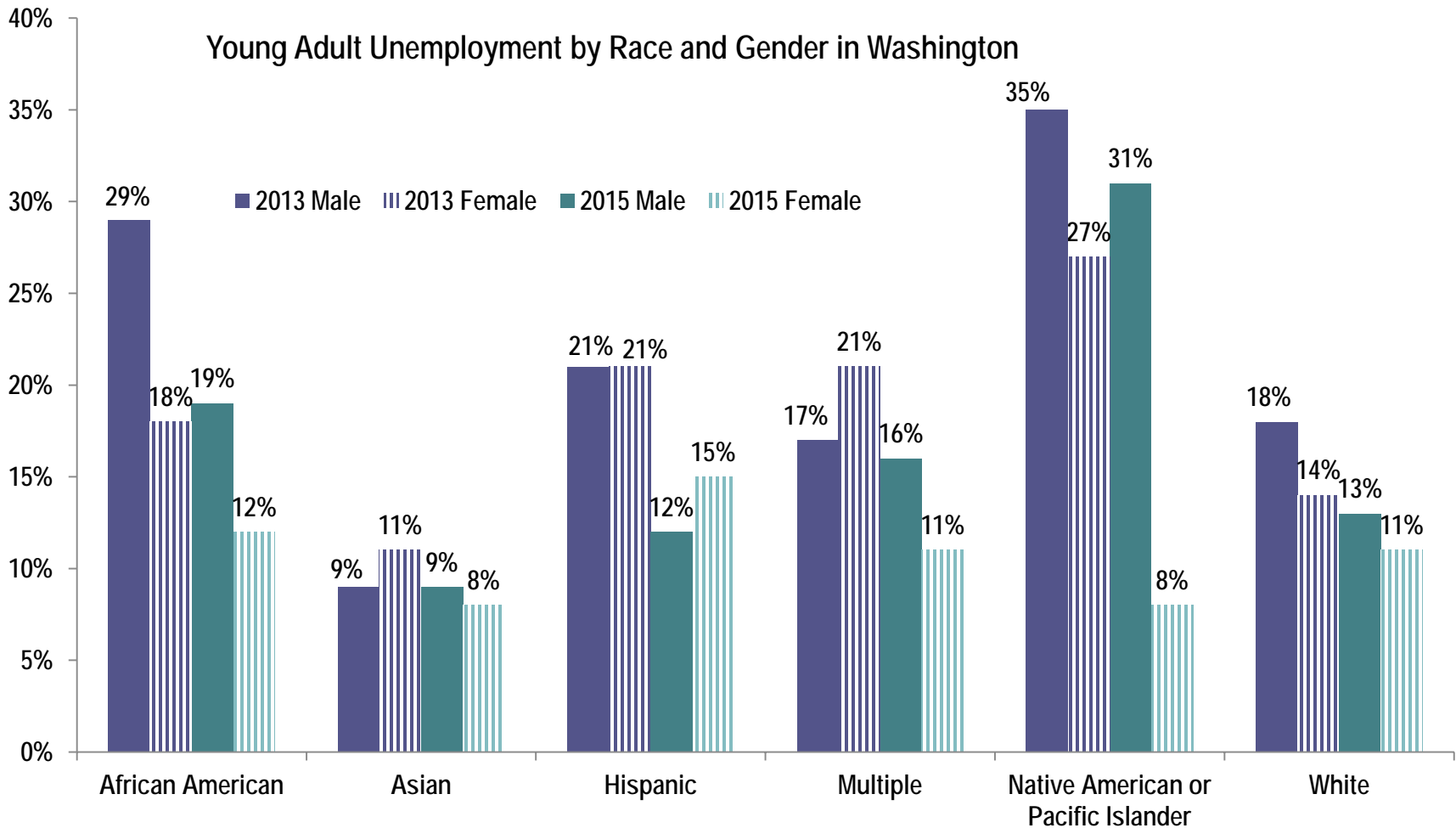
Source: Bureau of Labor Statistics, Geographic Profiles of Unemployment

Youngest workers show low and declining labor force participation



Source: Bureau of Labor Statistics, Geographic Profiles of Unemployment

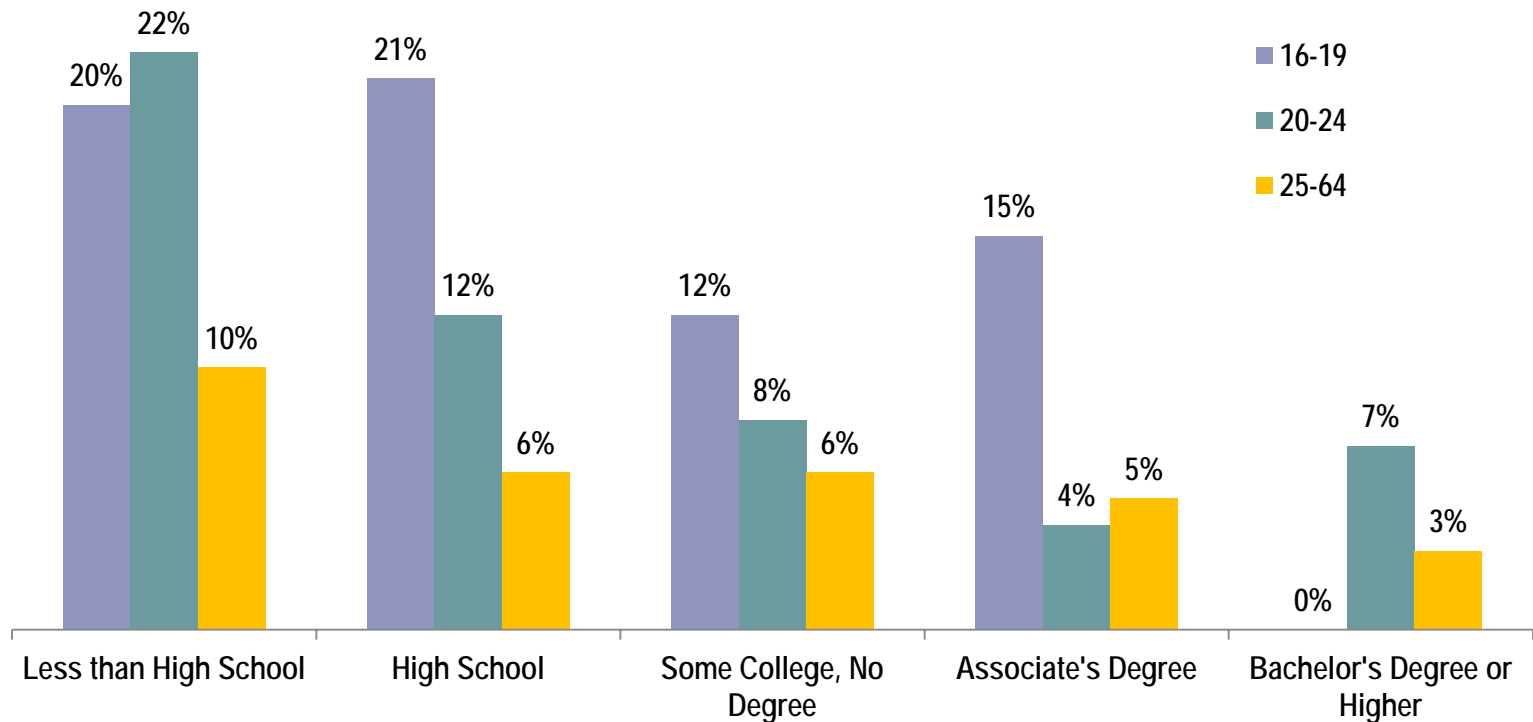
Unemployment by race/ethnicity



Source: American Community Survey, U.S. Census

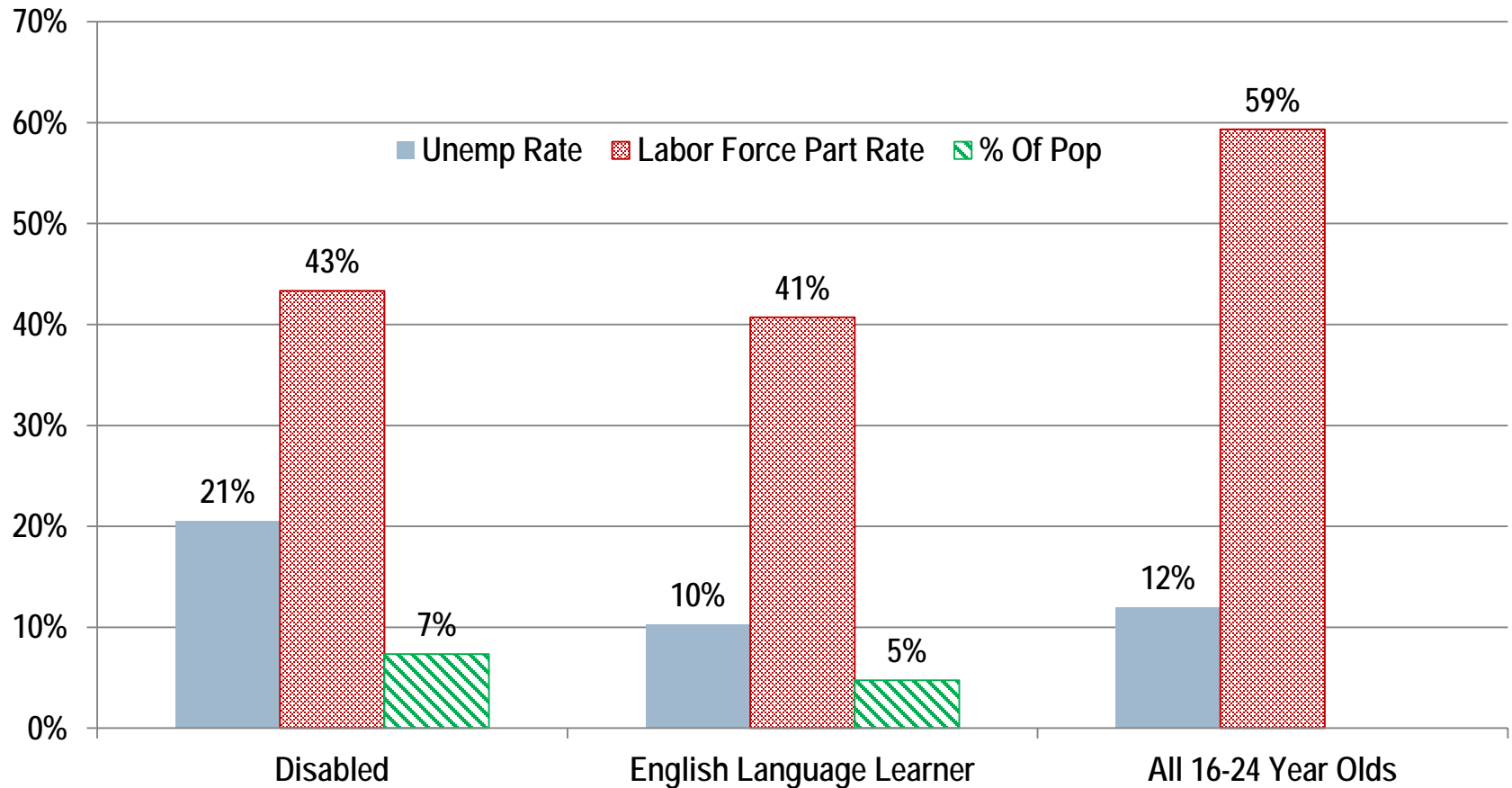
As with all groups education plays a role in employment outcomes

Young Adult Unemployment by Education, Age Range



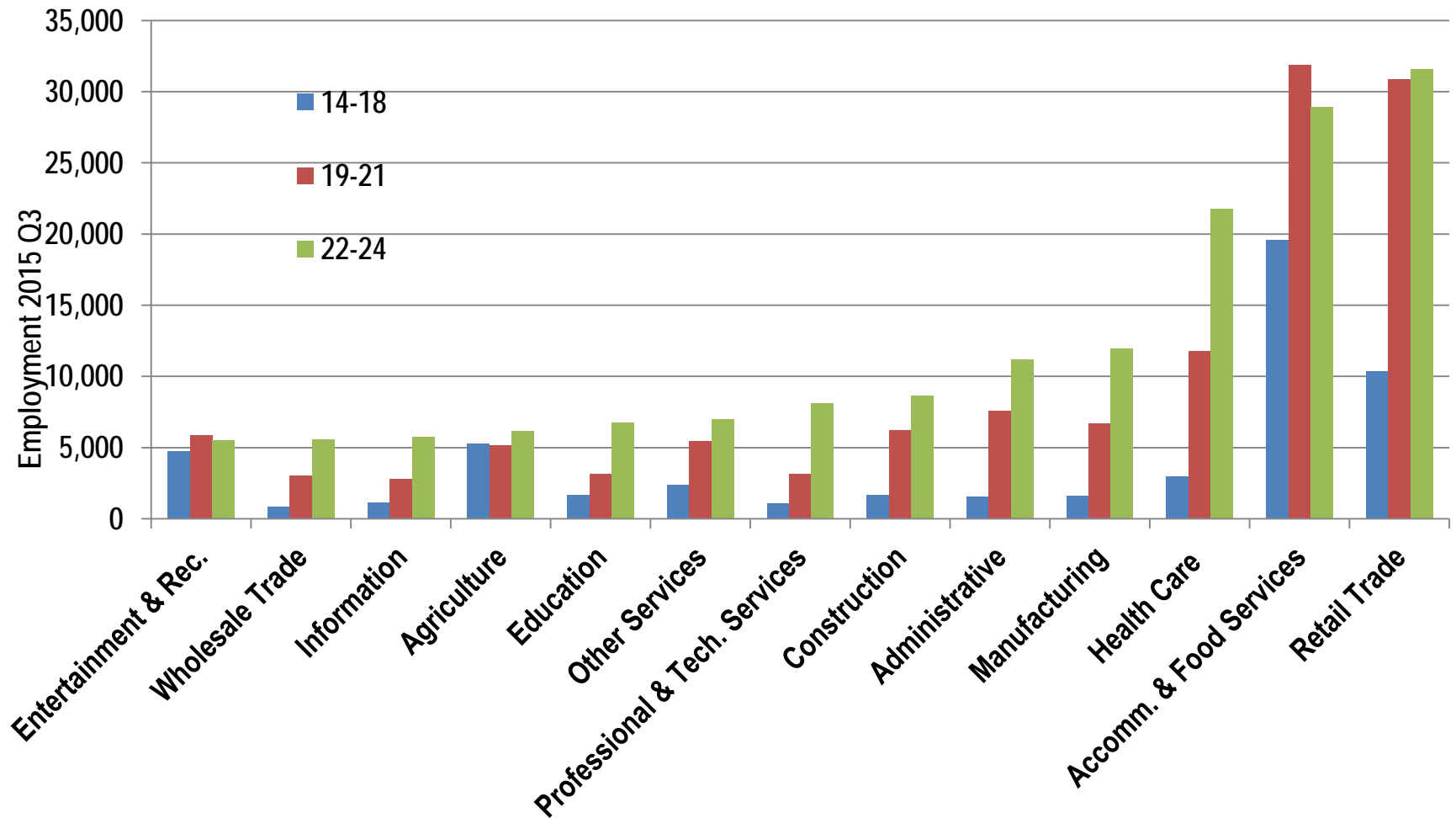
Source: American Community Survey, U.S. Census

Young people facing barriers to employment still behind



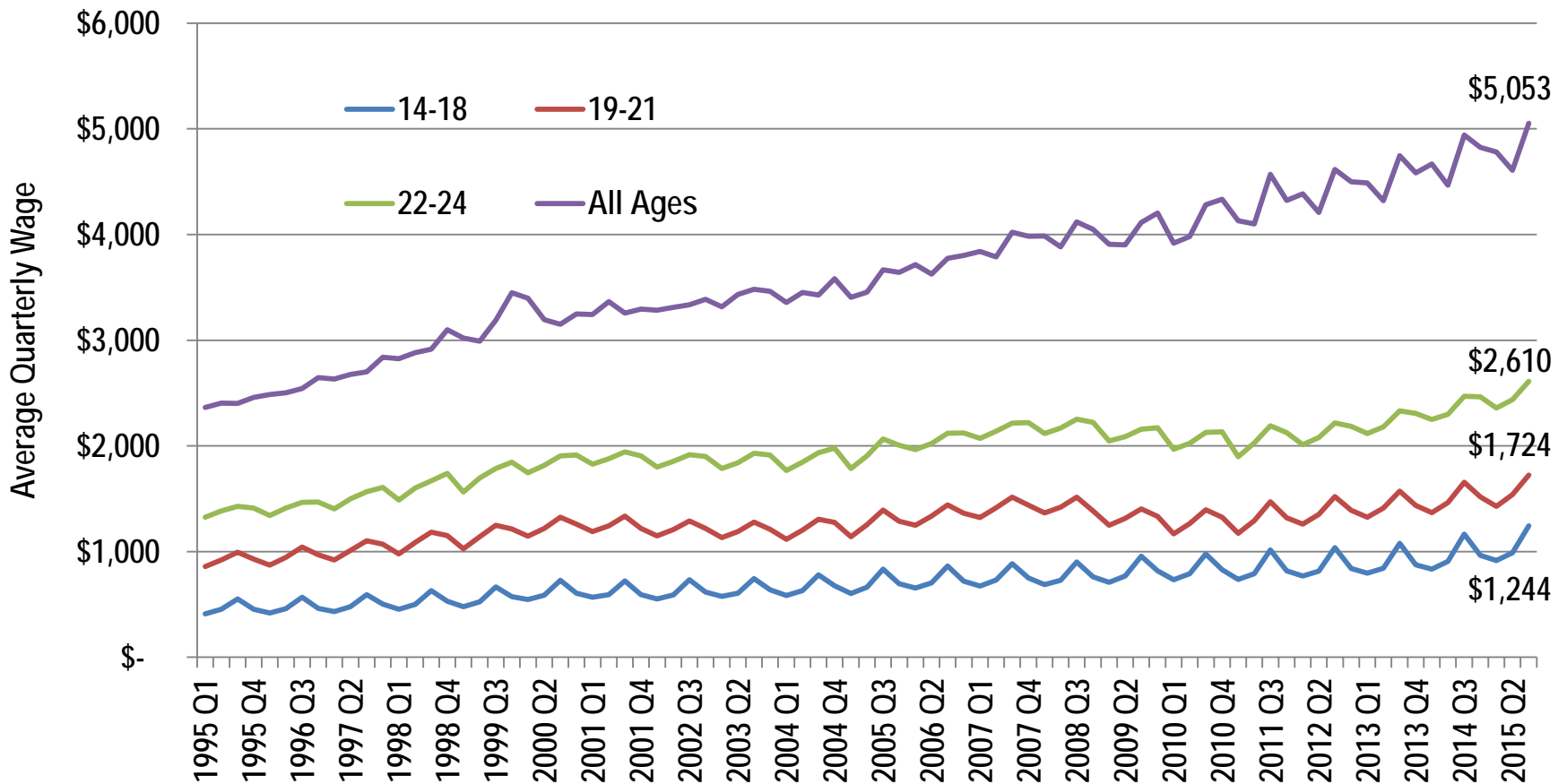
Source: American Community Survey, U.S. Census, 2015, Washington

Where are Youth finding work



Source: Local Employment Dynamics, U.S. Census

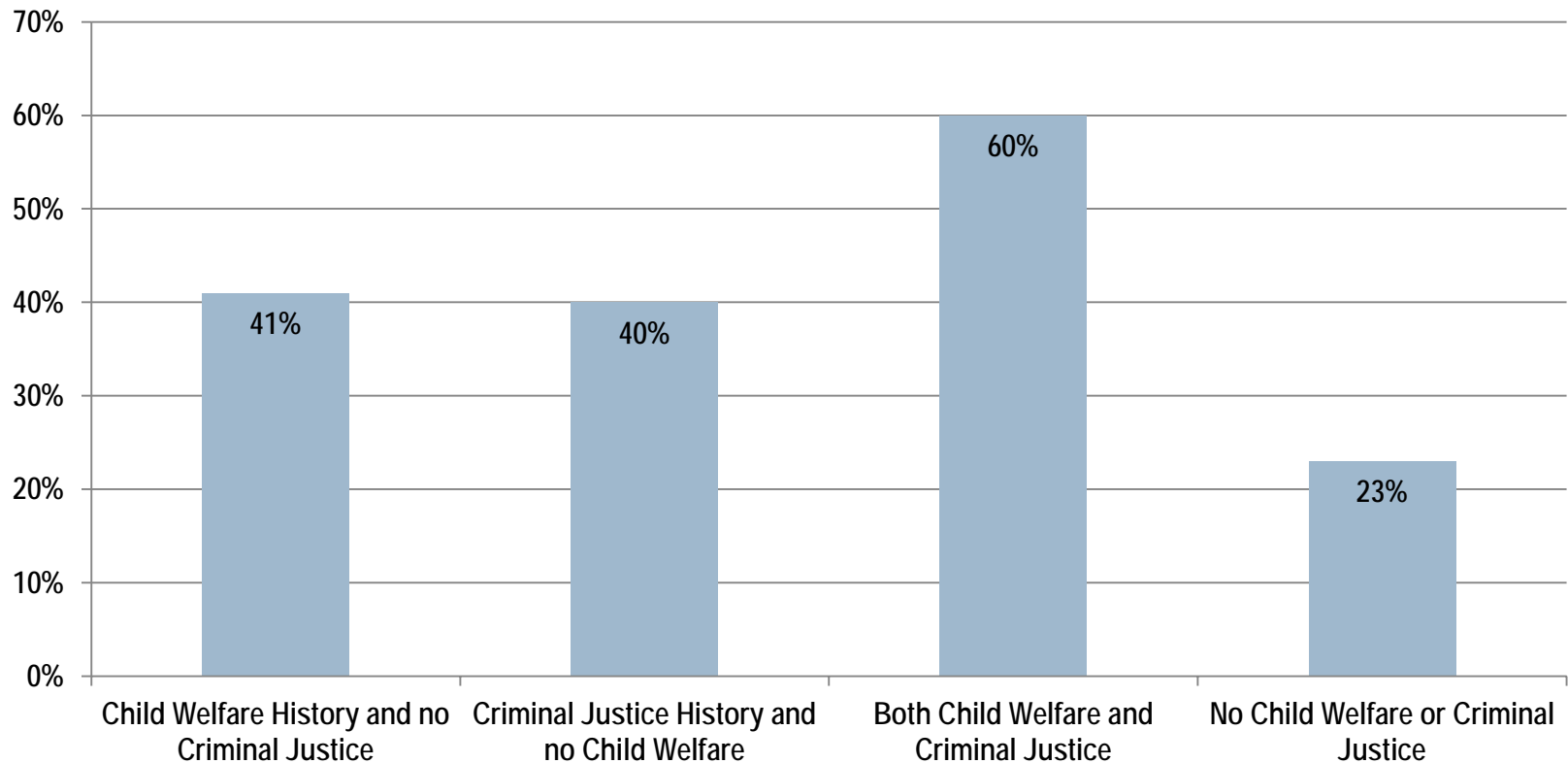
How well are Youth getting paid?



Source: Local Employment Dynamics, U.S. Census

Projected Likelihood of Disengagement

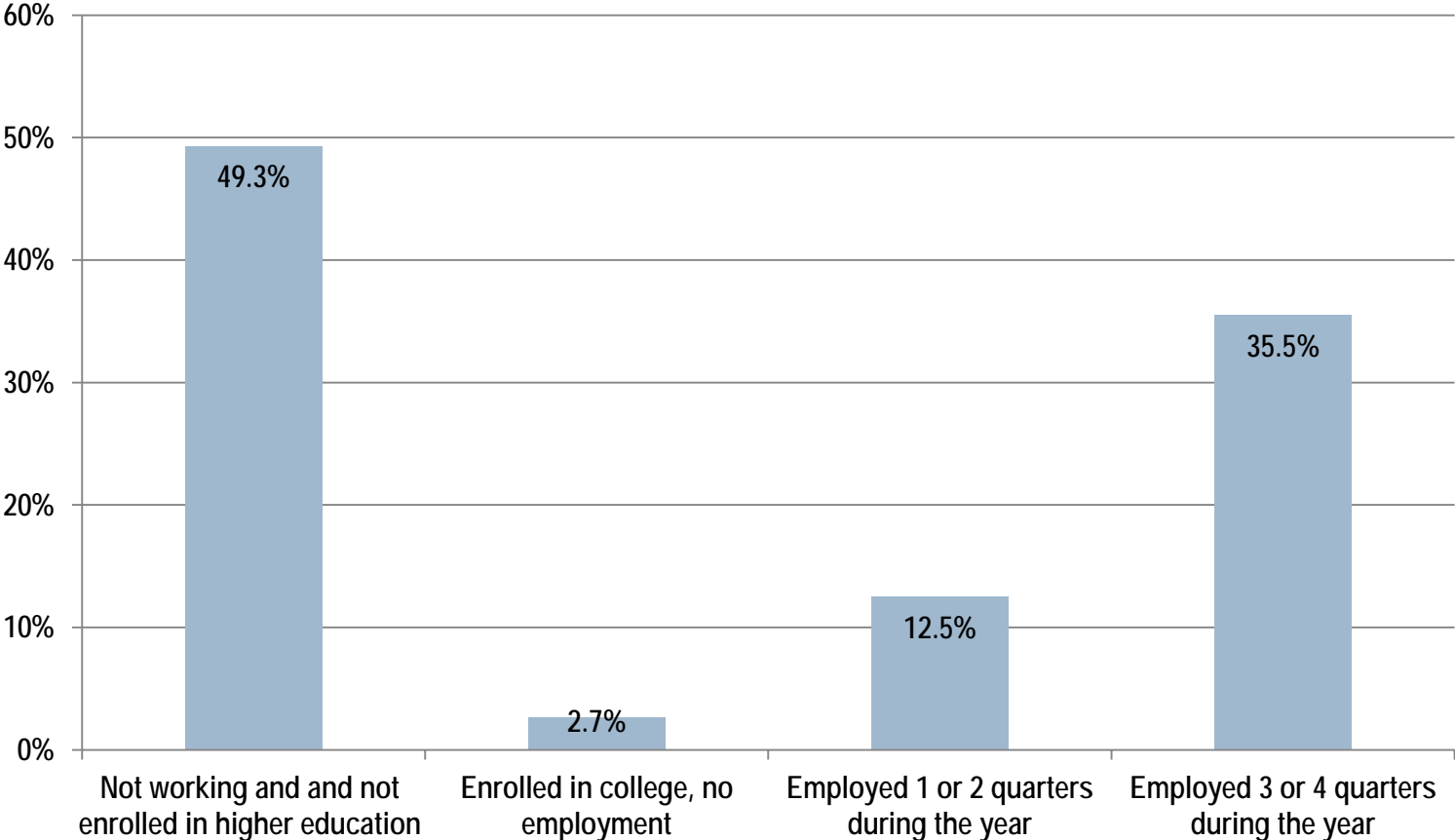
For youth Age 15 in AY 2006 to AY 2011



Source: DSHS, Opportunity Youth: Factors that Predict Disengagement from School and Work Among Youth in Washington State

Special education student outcomes

12th graders in AY 2005/06 and served by DSHS between 2006 and 2008, 6 years later



Source: DSHS\ERDC, Connections to Employment and Education

The End/Questions?

Reach me at:

Dave.Wallace@wtb.wa.gov

360-709-4613