

# Achievement Index Update ESD 113

Sarah Rich, Policy Director  
April 24, 2013

# Why Revise the Index?

1. Replace federal accountability system with aligned state system that applies to all schools, not just Title I funded schools

2. Fulfill legislative expectations:  
ESHB 2261 (2009)  
E2SSB 6696 (2010)

3. Incorporate newly available student growth data for a fairer representation of school performance

4. Focus on closing opportunity gaps

# Index Principles: July 2012 SBE Resolution

## Alignment with system goals

- Preparing students for post-secondary education, gainful employment, and citizenship.

## Student growth data

- Equitable way to evaluate school and district performance.

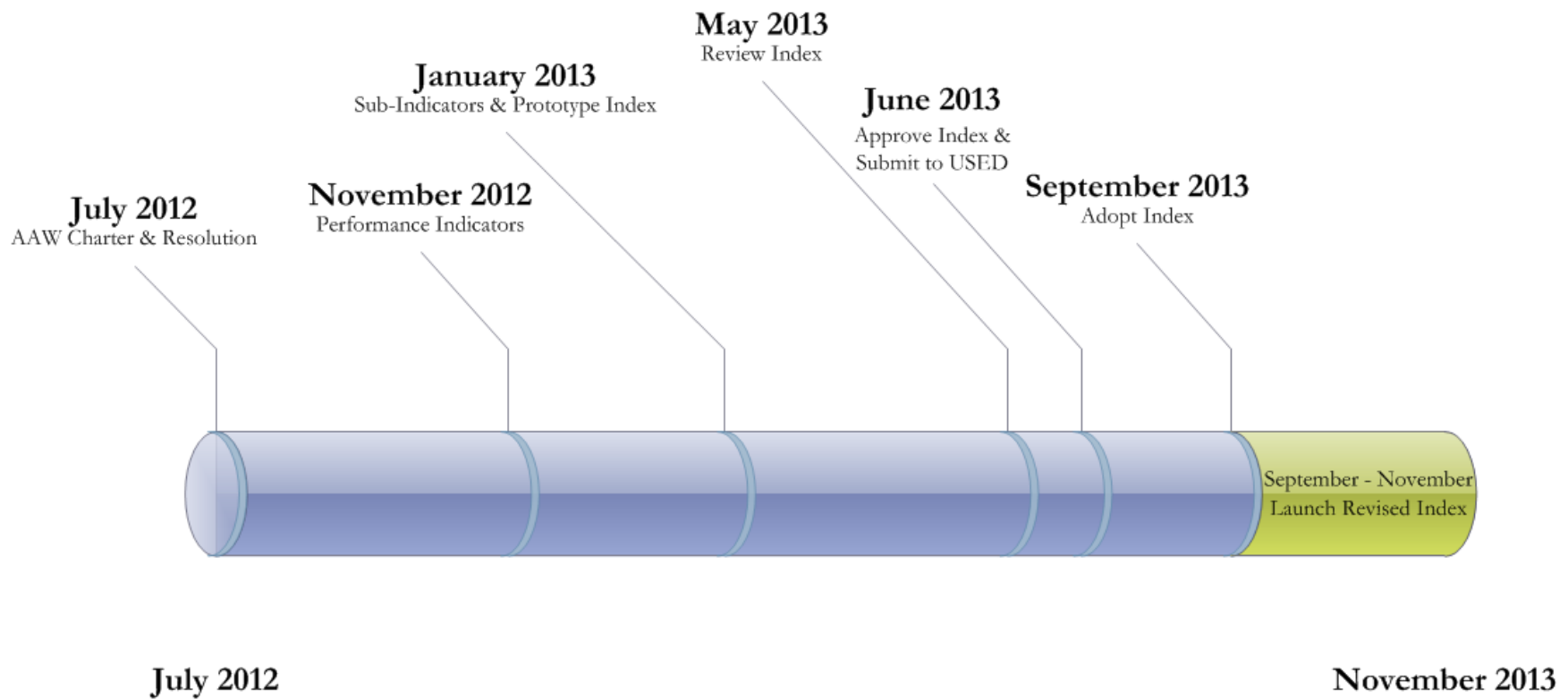
## Disaggregation by subgroup

- Necessary to ensure that achievement and growth gaps are not hidden.

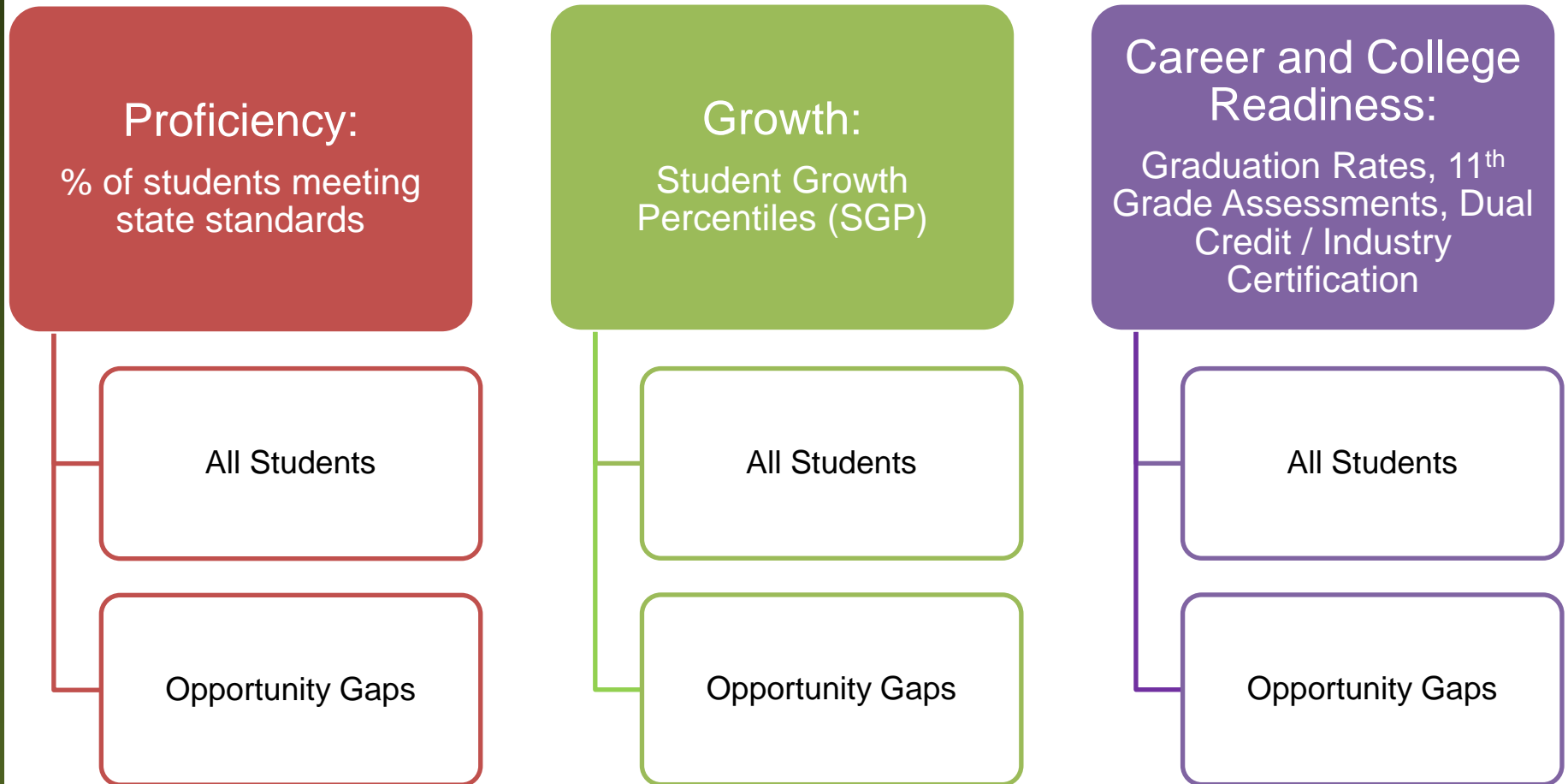
## Tool for practitioners and policymakers

- Used by educators, parents, and community members for both internal improvement and external accountability.

# Revision Timeline



# Revised Index Prototype



# Student Growth Percentiles

File Edit View Favorites Tools Help

 State of Washington  
**OSPI**  
Office of  
Superintendent of Public Instruction

Home | Certification | Offices & Programs | Teaching & Learning | Assessment | Finance & iGrants | Research & Reports

Assessment Overview *Assessment / Testing*

State Testing

Test Administration

WAAS-Special Ed.

Teacher Resource Tool

Assessment Coordinators

EDS-WAMS Login

Washington English  
Language Proficiency  
Assessment

Data/Reports

Research Reports

Technical Reports

Item Analysis

## Student Growth Percentiles FAQ

This page provides Washington school district and ESD personnel with an overview of student growth percentiles, a new method of measuring student academic growth introduced by OSPI in March 2013.

This page will answer the following questions:

- [What is a student growth percentile?](#)
- [How are student growth percentiles calculated?](#)
- [To whom are students being compared? What is an academic peer?](#)
- [What is a median growth percentile?](#)
- [Can we still compare scores across years if the tests change?](#)
- [Can high scoring students still demonstrate growth?](#)
- [Which students get growth percentiles and which students are included in school and district medians?](#)
- [How do we interpret a growth percentile in 10th grade Reading or Algebra if there was no score in 9th grade?](#)
- [What can student growth percentiles tell us?](#)
- [What kind of data will districts receive and when?](#)
- [How will student growth percentile data be used?](#)
- [How will the data be made available?](#)
- [Will student growth percentiles be reported publicly?](#)
- [Where can I get more information?](#)

### An Introduction to Student Growth Percentiles

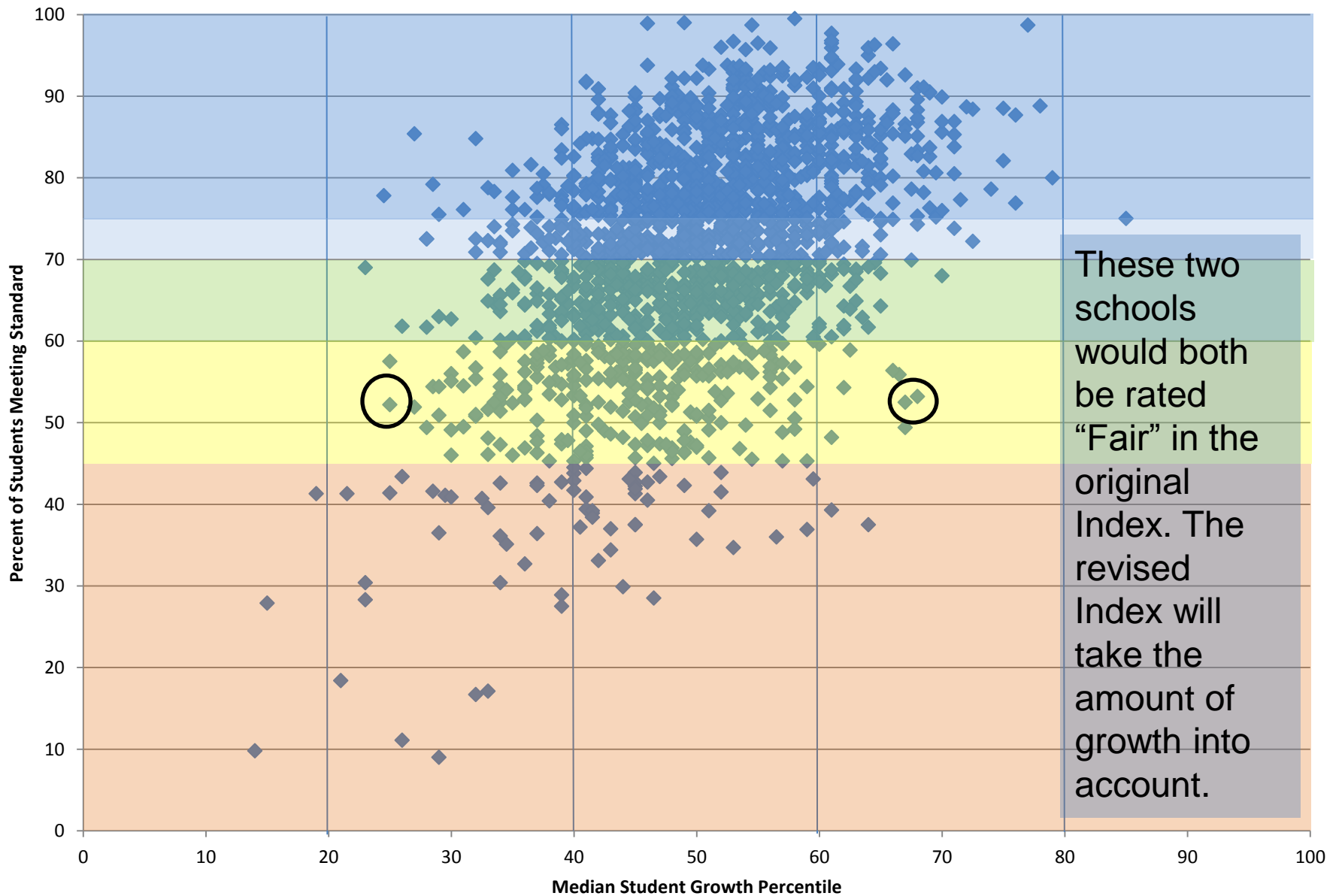
Student Growth Percentiles Explained: Presented...



[http://www.youtube.com/watch?v=6e\\_j9QwjVWk&feature=player\\_embedded](http://www.youtube.com/watch?v=6e_j9QwjVWk&feature=player_embedded)

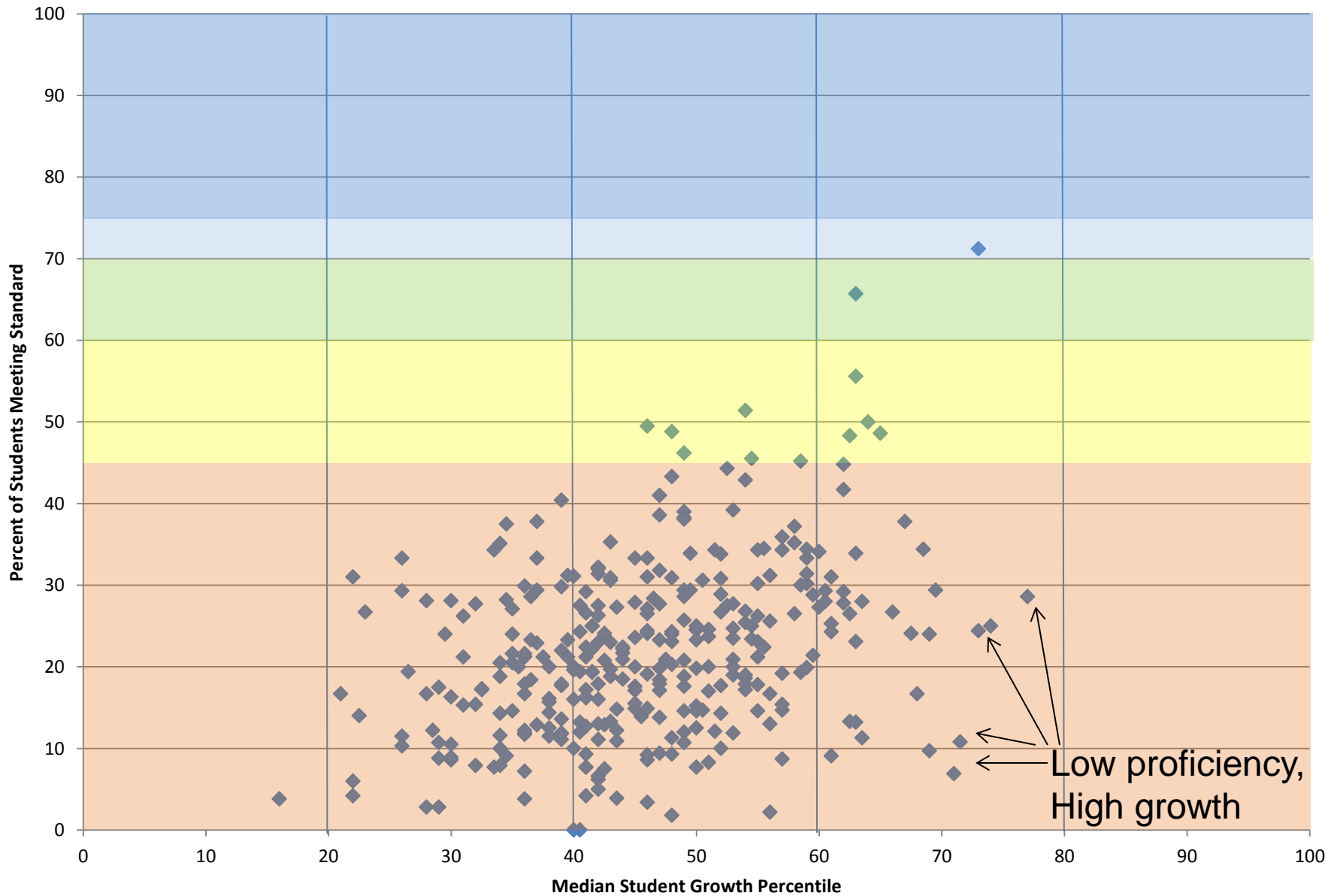
# Growth Overview – Washington Data

## All - Reading Proficiency and Growth

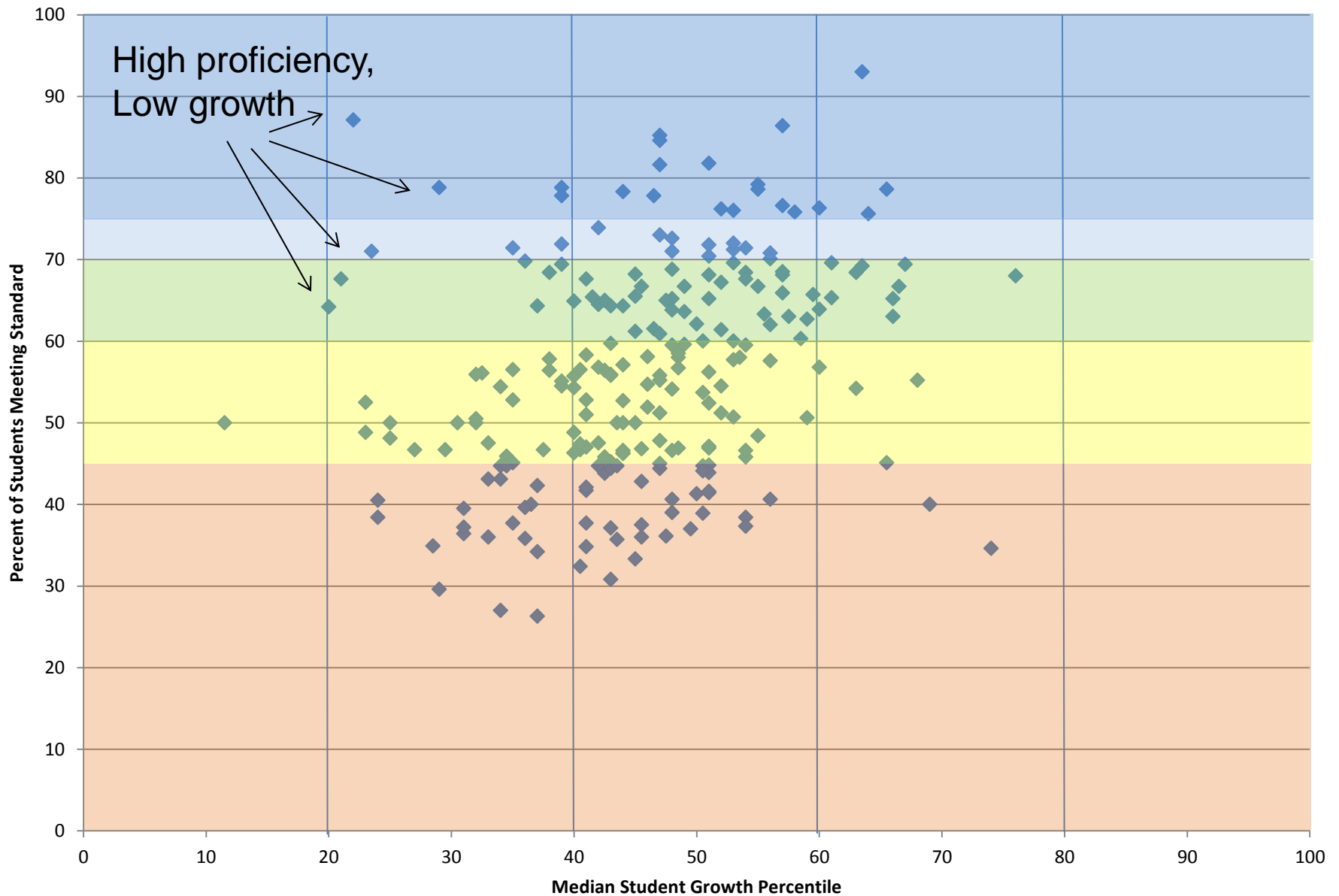




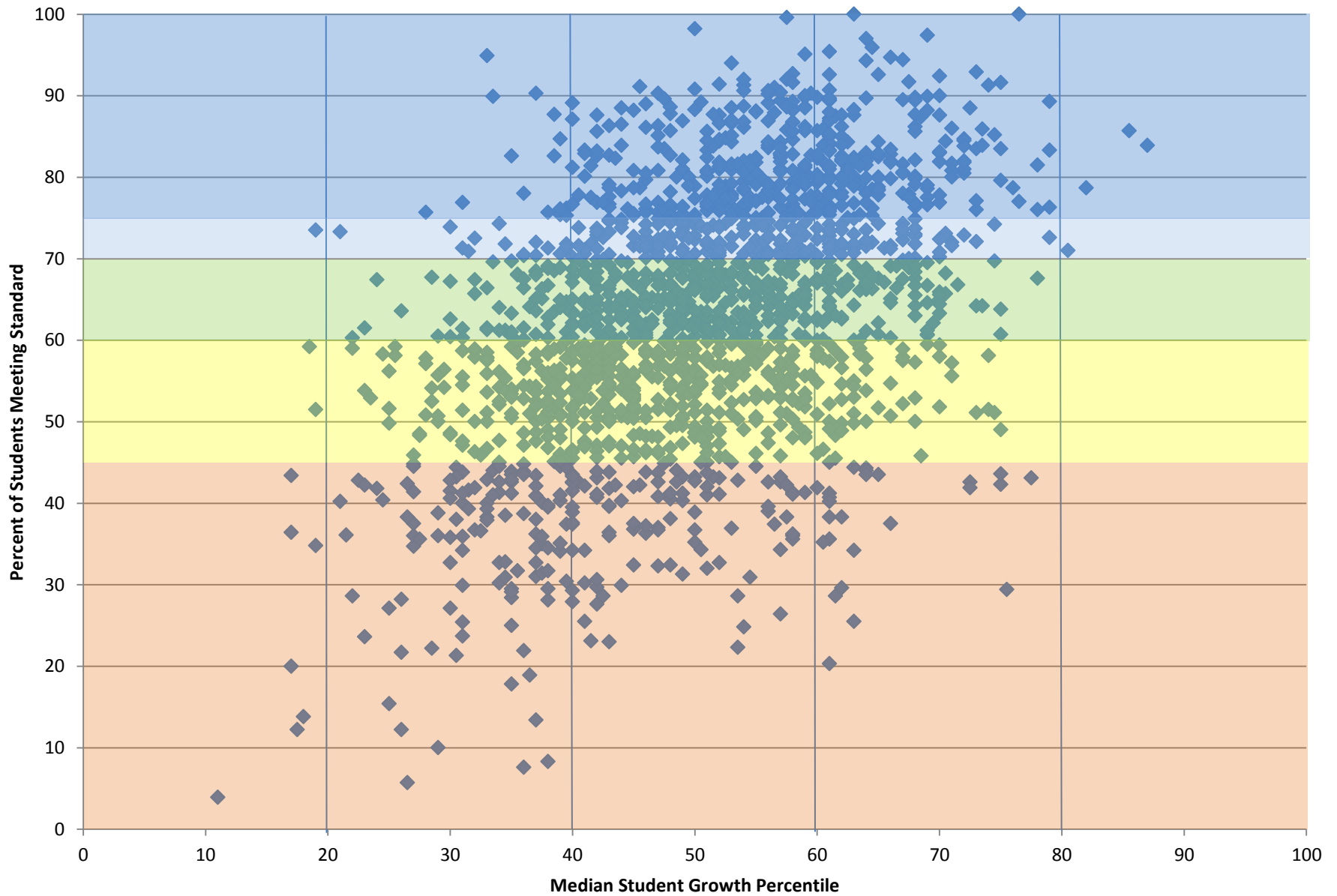
## ELL - Reading Proficiency and Growth



## Black - Reading Proficiency and Growth



## All - Math Proficiency and Growth

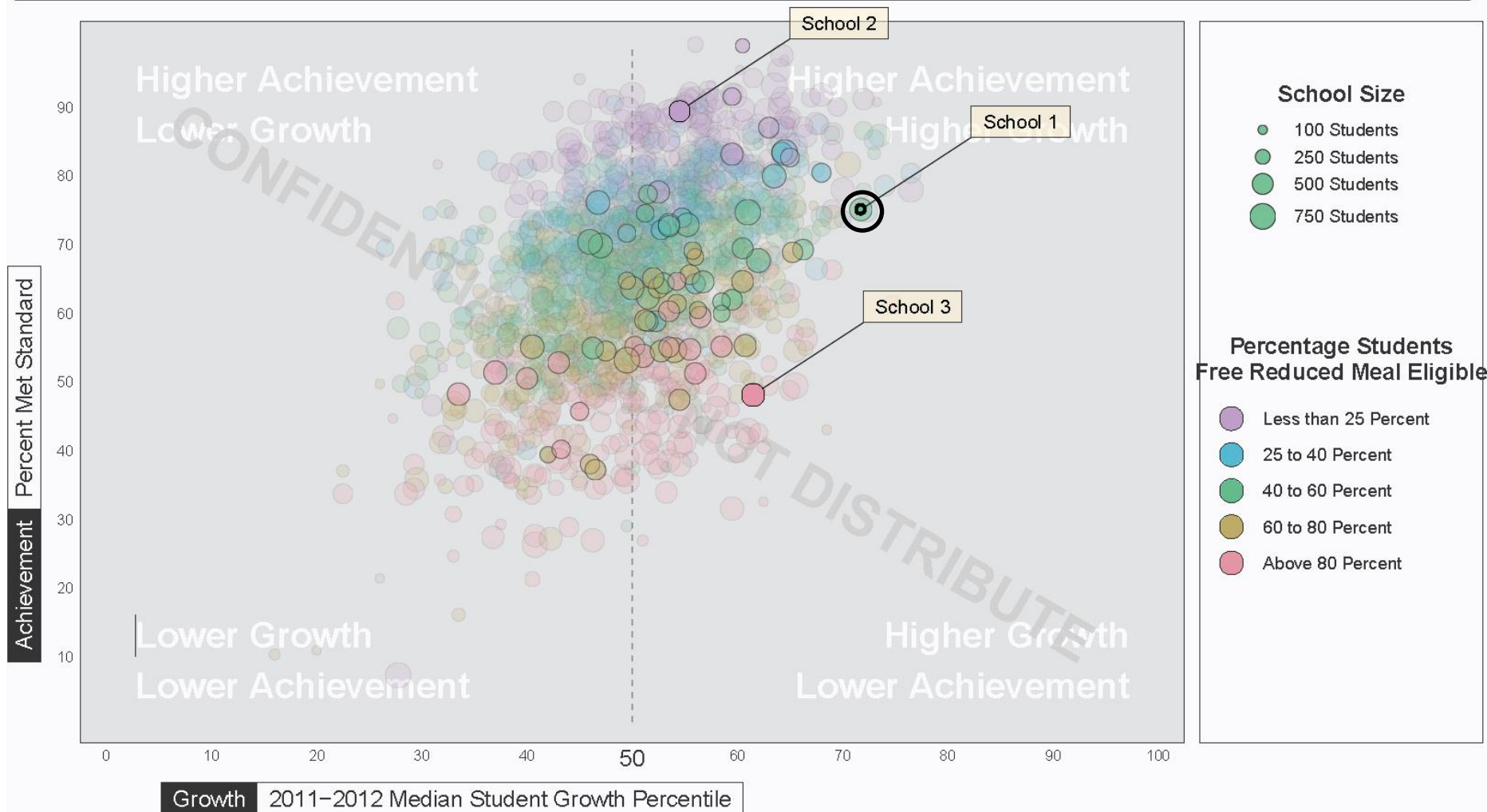


# Revised Index Scoring System

% Met Standard	Grad Rate	Index - Current	Tiers - Current (2012)	Index - Revised	Tiers - TBD
90-100	95-100	7	Exemplary - 10%	10	
80-89.9	90-94.9	6		9	
75-79.9	85-89.9	5		Very Good - 14%	
70-74.9					
60-69.9	80-84.9	4	Good - 35%	7	
50-59.9	75-79.9	3	Fair - 27%	6	
45-49.9	70-74.9	2		Struggling - 7 %	
40-44.9					
30-39.9	65-69.9	1	4		
20-29.9	60-64.9		3		
10-19.9	55-59.9		2		
1-9.9	<55		1		

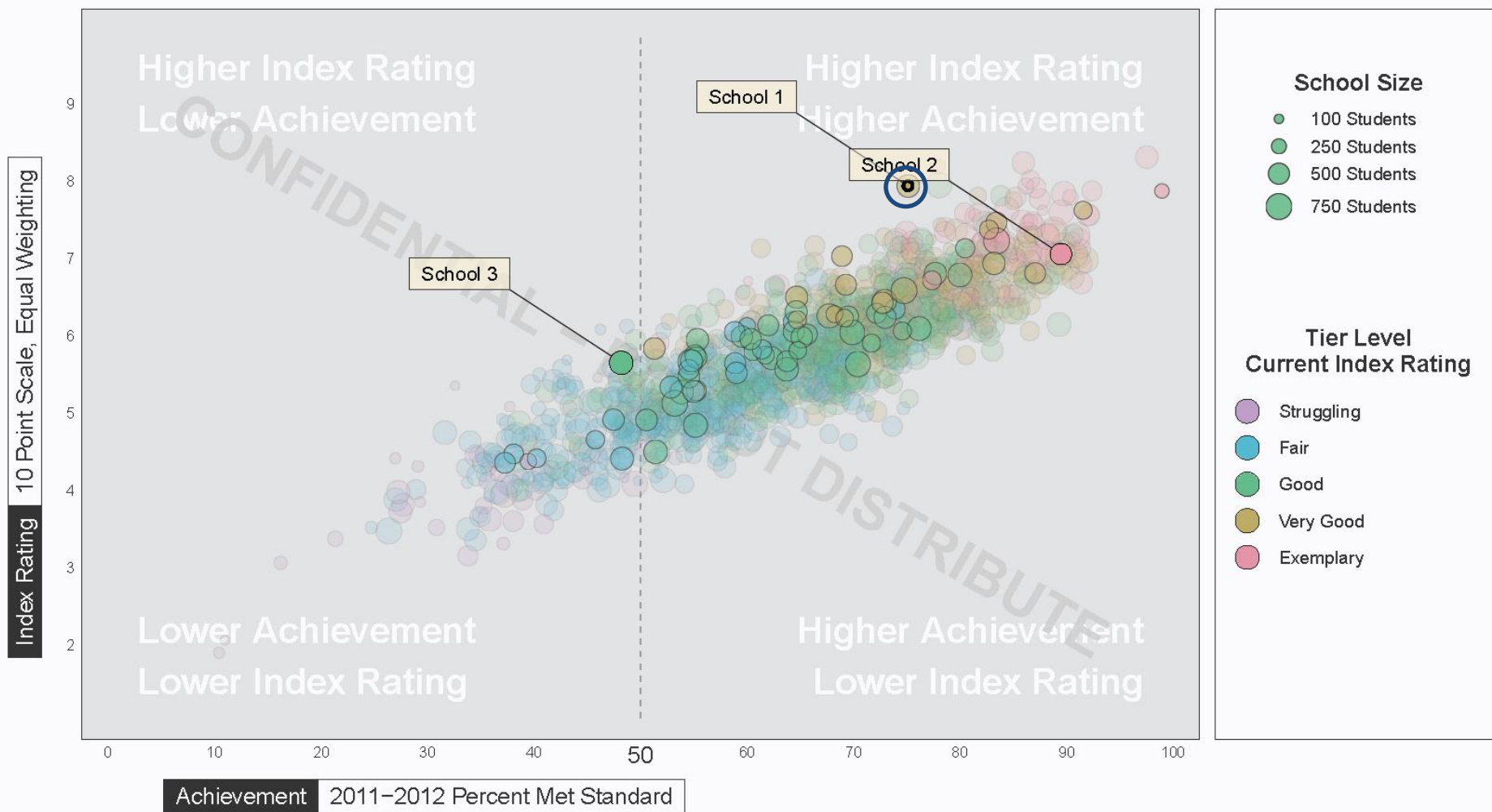
# Growth and Achievement

Primary Schools Performance  
Index Performance Indicators



# Achievement and Index Rating

Primary Schools Performance  
Equal Weight Index Rating



# Overall Index Draft

		Reading	Writing	Math	Science	Average
Proficiency (10 possible points)	All Students	7	8	7	6	7
	Opportunity Gaps	5	5	5	4	4.9

		Reading	Math	Average	Doubled for 10-point scale
Growth (5 possible points)	All Students	4	3	3.5	7
	Opportunity Gaps	3	3.2	3.1	6.2

		Grad Rates	Dual/Ind Cert	11th Grade Assessments	CCR Overall
College and Career Readiness (10 possible points)	All Students	6			6
	Opportunity Gaps	3.5			3.5

<b>Overall Index Rating (10 possible points)</b>	<b>5.77</b>
--	-------------

# Proficiency Detail - % Met Standard

Proficiency					
Student Groups	Reading	Writing	Math	Science	Average
All	67.8	70.8	67.3	53.9	64.95
Asian					
White	71.3	72.7	70.7	56.3	67.75
American Indian/Alaska Native					
Pacific Islander/Native Hawaiian					
Black/African American					
Hispanic	70	71.4	65		68.80
Two or more Races	69.6	73.9	60.9	56.5	65.23
Limited English	4.8	9.5	19	9.5	10.70
Special Education	40	38.6	31.7	38.3	37.15
Low Income	64.4	66.5	62	51.5	61.10
Opportunity Gaps	49.76	51.98	47.72	38.95	48.60



# Proficiency Detail - Ratings

Proficiency					
Student Groups	Reading	Writing	Math	Science	Average
All	6.8	7.1	6.7	5.4	6.5
Asian					
White	7.1	7.3	7.1	5.6	6.8
American Indian/Alaska Native					
Pacific Islander/Native Hawaiian					
Black/African American					
Hispanic	7.0	7.1	6.5	NA	6.9
Two or more Races	7.0	7.4	6.1	5.7	6.6
Limited English	0.5	1.0	1.9	1.0	1.1
Special Education	4.0	3.9	3.2	3.8	3.7
Low Income	6.4	6.7	6.2	5.2	6.1
Opportunity Gaps (simple average)	5.0	5.2	4.8	3.9	4.9

# Growth Detail

Median SGP	Points
<34	1
34-44	2
45-55	3
56-66	4
>66	5

Student Groups	Median Student Growth Percentiles			
	Median SGP-Reading	Reading Rating	Median SGP - Math	Math Rating
<b>All</b>	61	4	47	3
Asian	64	4	60	4
White	57	4	51	3
American Indian/Alaska Native				
Pacific Islander/Native Hawaiian				
Black/African American	42	2	52	3
Hispanic	53	3	37	2
Two or more Races				
Limited English			71	6
Special Education	56	4	40	2
Low Income	48	3	48	3
<b>Opportunity Gaps</b>		3.0		3.2

# Career and College Readiness Detail

College and Career Readiness					
Student Groups	4 year Graduation	5 year Graduation	Rating	Dual Credit/Industry Certification	11th Grade Career and College Readiness
All	76.6	78.2	6		
Asian	82.9	85.2	8		
White	80	81.3	7		
American Indian/Alaska Native	56.5	58.8	2		
Pacific Islander/Native Hawaiian	66.2	65.7	4		
Black/African American	65.4	68.6	4		
Hispanic	64.5	66.4	4		
Two or more Races	73.6	72.9	5		
Limited English	52.5	56.6	2		
Special Education	56.6	60.7	3		
Low Income	65.2	66.8	4		
Opportunity Gaps			3.5		

# Next Steps

Final Achievement and Accountability Workgroup report (June)

Approval by SBE (June special meeting)

Submission to US Department of Education

September adoption by SBE

# Your Questions and Input

Sarah Rich, [sarah.rich@k12.wa.us](mailto:sarah.rich@k12.wa.us), 360-725-6311