

# Washington Achievement Index



1. Why the Index was created
2. Index components
3. Criteria used for recognition
4. Changes with ESEA Flexibility

Sarah Rich, Research Director  
Washington State Board of Education

Sarah Rich, Policy Director

# Background & Purpose

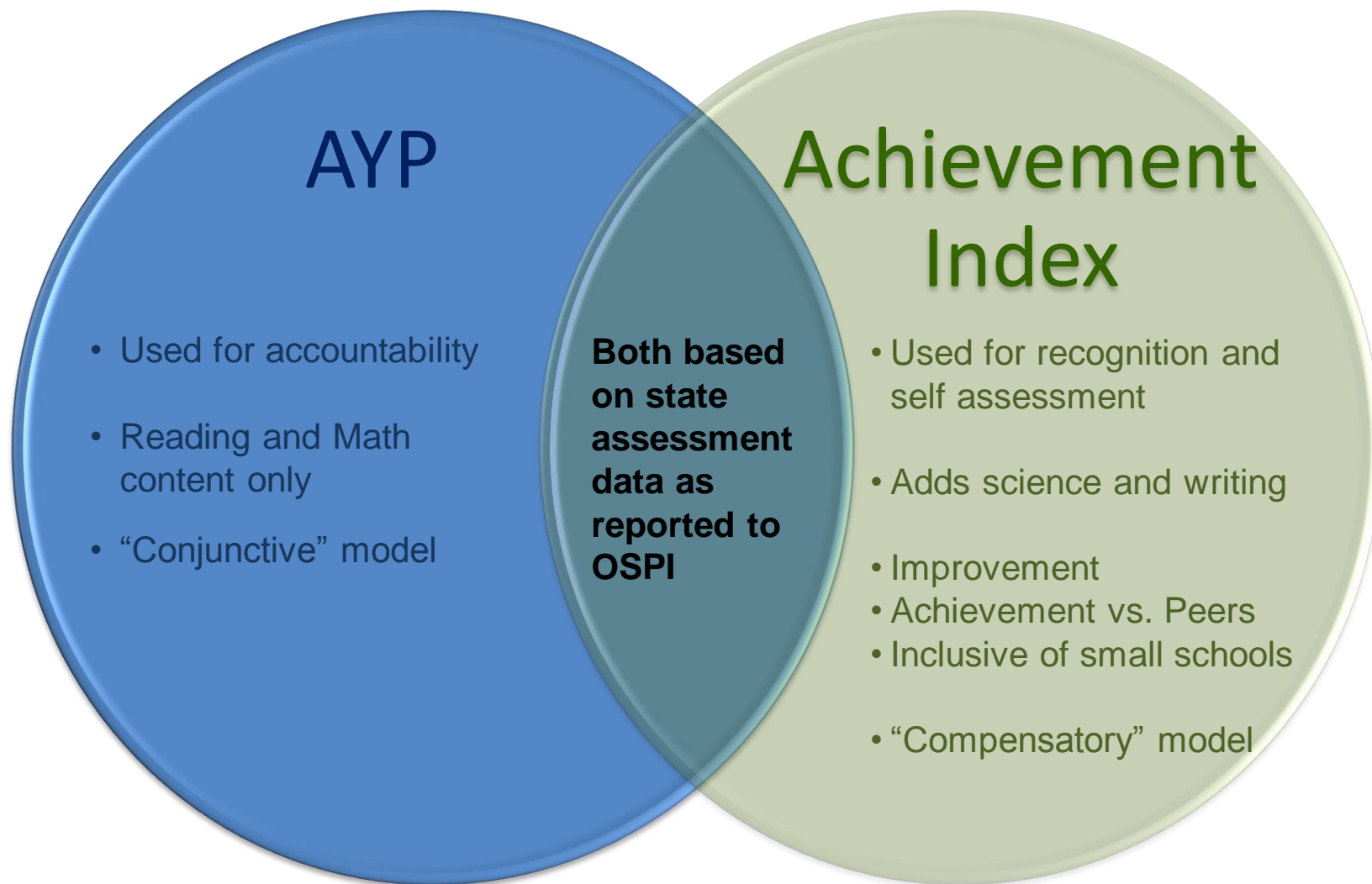


ESHB 2261 (signed May 2009):  
create accountability index

Purpose: complement or replace federal  
accountability system (AYP)

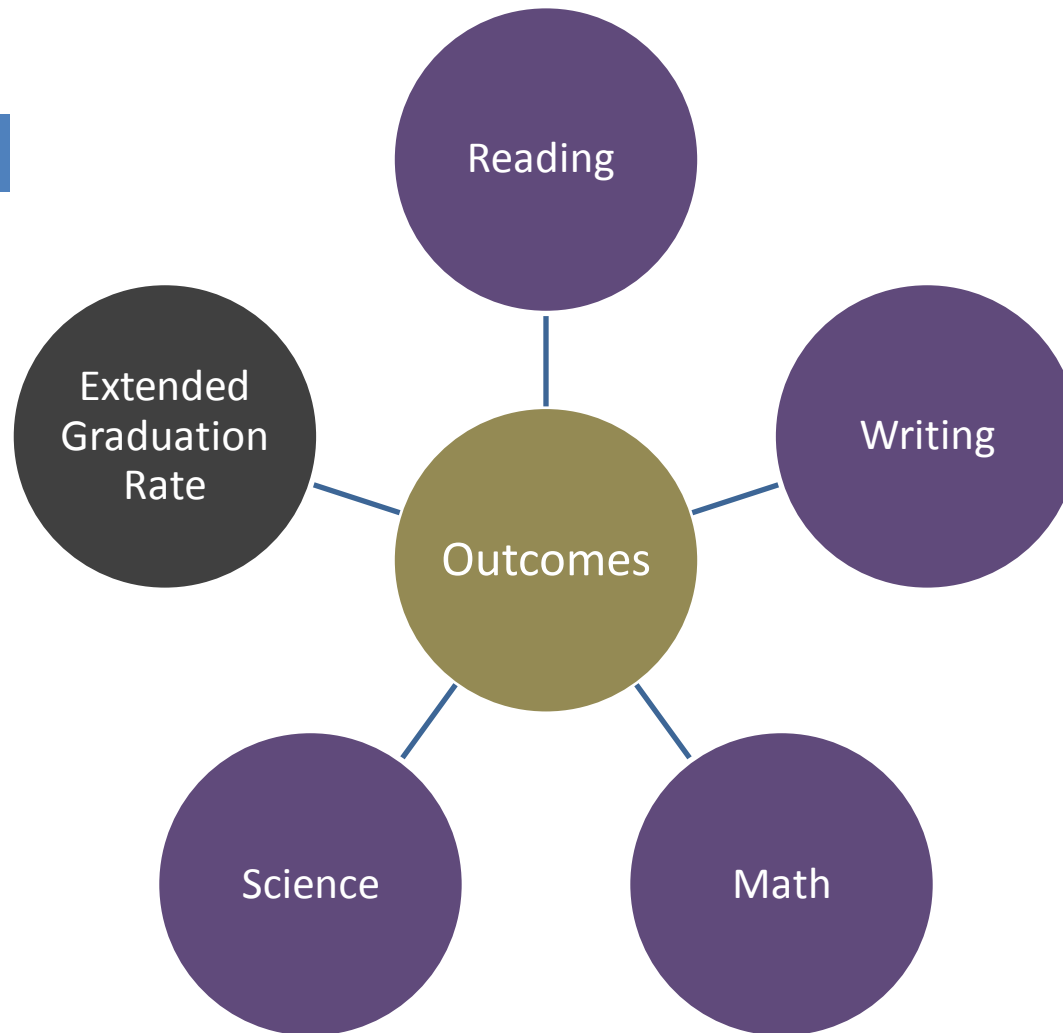
**A revised Index is proposed as the  
backbone of ESEA Flexibility**

# How is the Index Different from AYP?



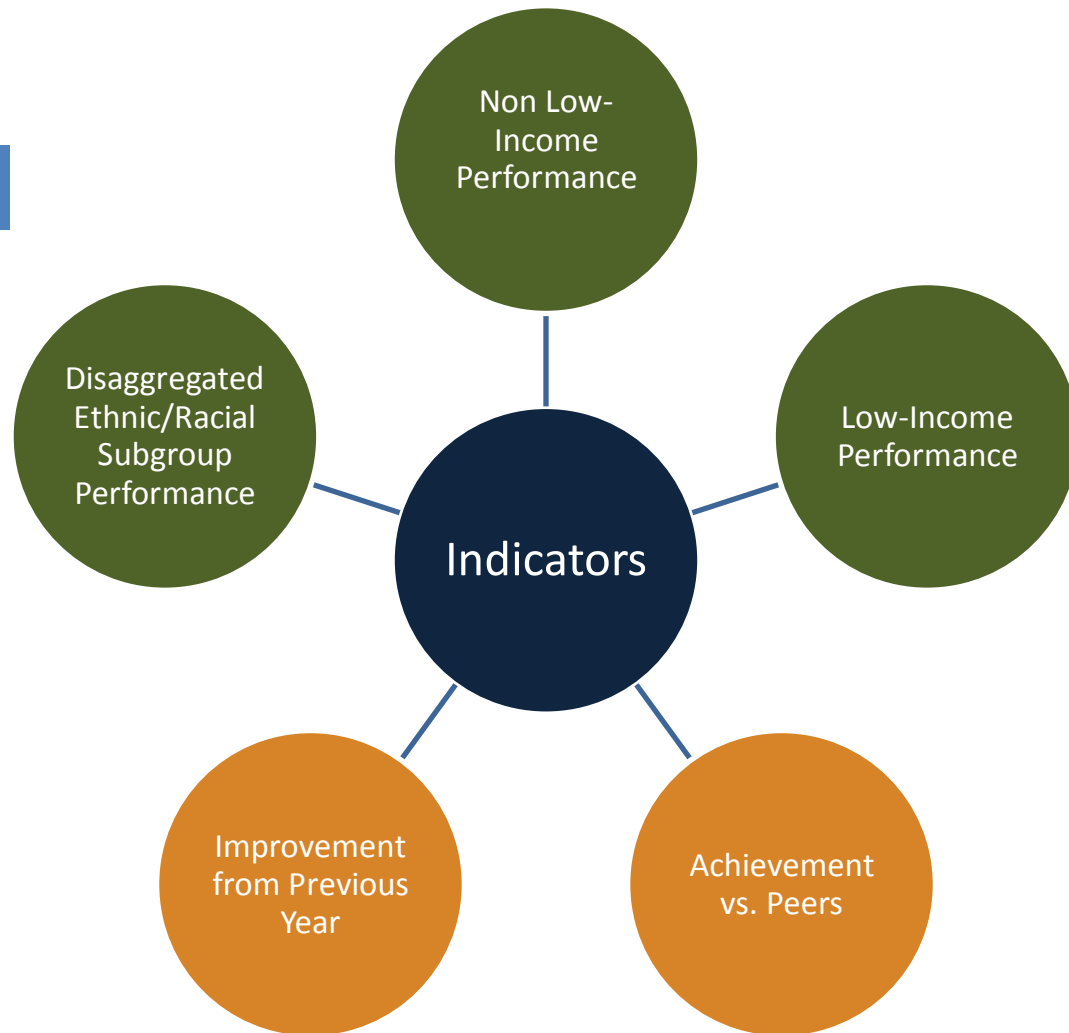
# Outcomes

Rows



# Indicators

Columns



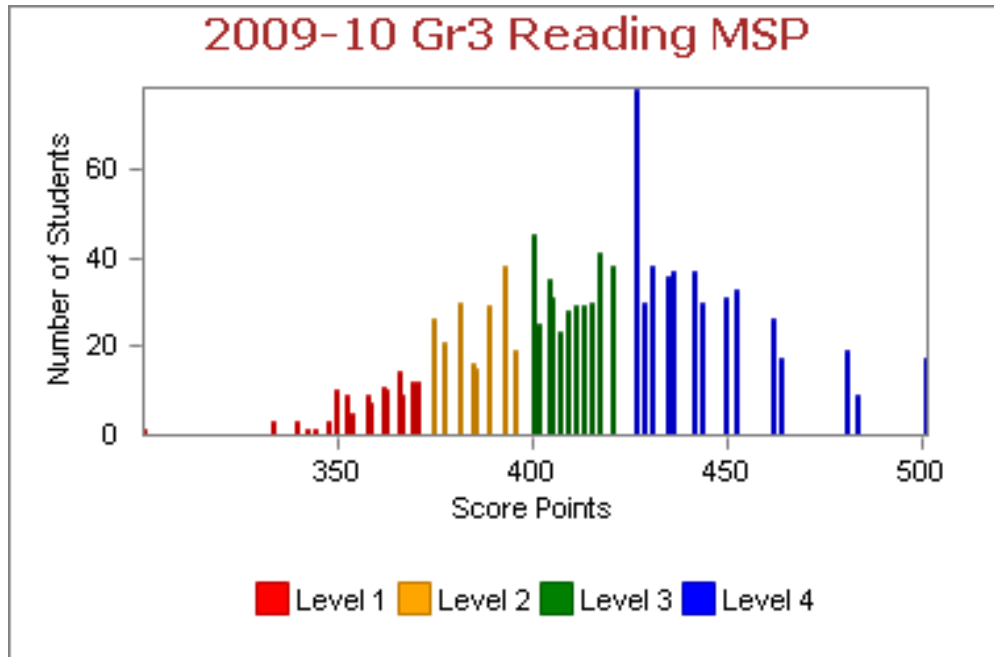
# Ratings

<b>Indicator</b>	<i>Reading</i>	<i>Writing</i>	<i>Math</i>	<i>Science</i>	<i>Ext. grad rate</i>	
<i>Achievement of - Non-low inc. - Low income (% met standard)</i>	<u>% MET STANDARD</u>		<u>RATING</u>		<u>RATE</u>	<u>RATING</u>
	90 – 100%		7		> 95	7
	80 – 89.9%		6		90 – 95%	6
	70 – 79.9%		5		85 – 89.9%	5
	60 – 69.9%		4		80 – 84.9%	4
	50 – 59.9%		3		75 – 79.9%	3
	40 – 49.9%		2		70 – 75%	2
< 40%		1		< 70%	1	
<i>- Achievement vs. Peers (Learning Index)</i>	<u>DIFFERENCE IN LEARNING INDEX</u>		<u>RATING</u>		<u>DIFFERENCE IN RATE</u>	<u>RATING</u>
	> .20		7		> 12	7
	.151 to .20		6		6.1 to 12	6
	.051 to .15		5		3.1 to 6	5
	-.05 to .05		4		-3 to 3	4
	-.051 to -.15		3		-3.1 to -6	3
	-.151 to -.20		2		-6.1 to -12	2
< -.20		1		< -12	1	

# Ratings

Indicator	<i>Reading</i>	<i>Writing</i>	<i>Math</i>	<i>Science</i>	<i>Ext. grad rate</i>
- <i>Improvement</i> (Learning Index)	CHANGE IN				CHANGE
	<u>LEARNING INDEX</u>				<u>IN RATE</u>
					<u>RATING</u>
	> .15				7
	.101 to .15				6
	.051 to .10				5
	-.05 to .05				4
	-.051 to -.10				3
-.101 to -.15				2	
< -.15				1	
				7	
4.1 to 6				6	
2.1 to 4				5	
-2 to 2				4	
-2.1 to -4				3	
-4.1 to -6				2	
< -6				1	

# Learning Index



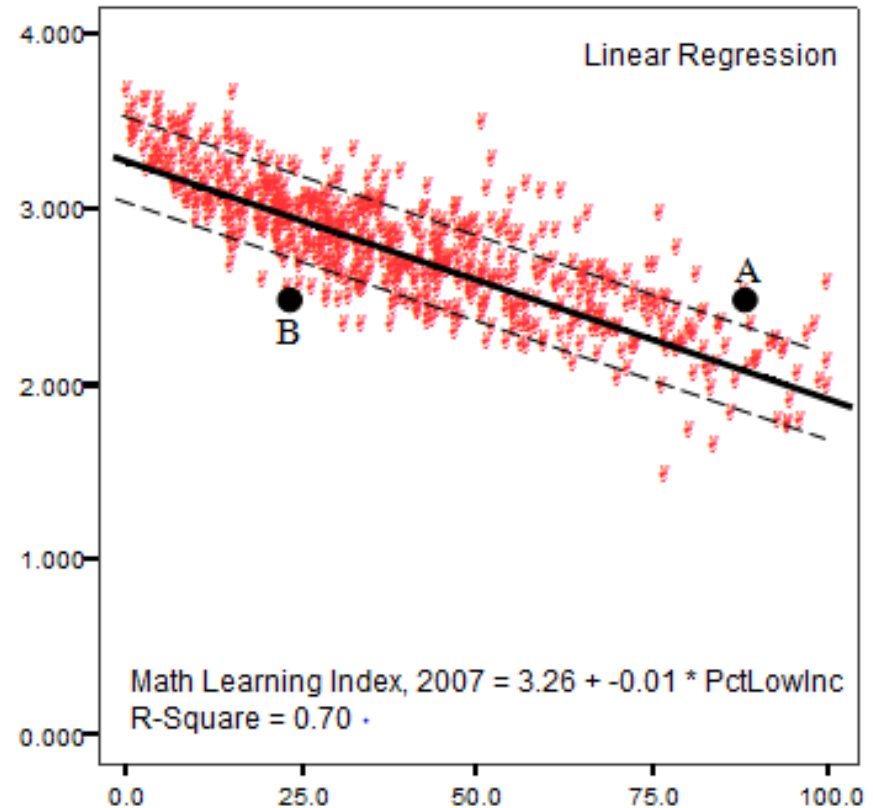
	Percent	Multiplier	Result
Not Tested	0.7	x 0 =	0.0
Level 1	12.6	x 1 =	12.6
Level 2	16.8	x 2 =	33.6
Level 3	30.7	x 3 =	92.1
Level 4	38.0	x 4 =	<u>152.0</u>
<b>Learning Index (Total / 100)</b>			<b>2.90</b>



# Peers Rating

Multiple Regression based on:

- % low income
- % English Learners
- % students w/disabilities
- % mobile
- % gifted



# Example

INDICATORS	OUTCOMES					
	Reading	Writing	Math	Science	Ext Grad Rate	Average
Achievement of non-low income students	7	7	5	4.5	6	5.9
Achievement of low income students	5	5.5	2	1	1	2.9
Achievement vs. peers	4.5	5	7	6.5	4	5.4
Improvement from the previous year	4	5.5	4.5	4.5	4	4.5
<b>Index scores</b>	<b>5.13</b>	<b>5.75</b>	<b>4.63</b>	<b>4.13</b>	<b>3.75</b>	<b>4.68</b> Tier: Good

TIER	INDEX RANGE
Exemplary	7.00-5.50
Very Good	5.49-5.00
Good	4.99-4.00
Fair	3.99-2.50
Struggling	2.49-1.00

# Washington Achievement Award

- SBE and OSPI Sponsored
- Awarded based on Achievement Index Performance



# Award Categories

## Outstanding Achievement: Top 5%

- Elementary
- Middle/Jr High
- High
- Comprehensive

## Special Recognition

- Language Arts
- Math
- Science
- Graduation Rate
- Closing Achievement Gaps
- Improvement

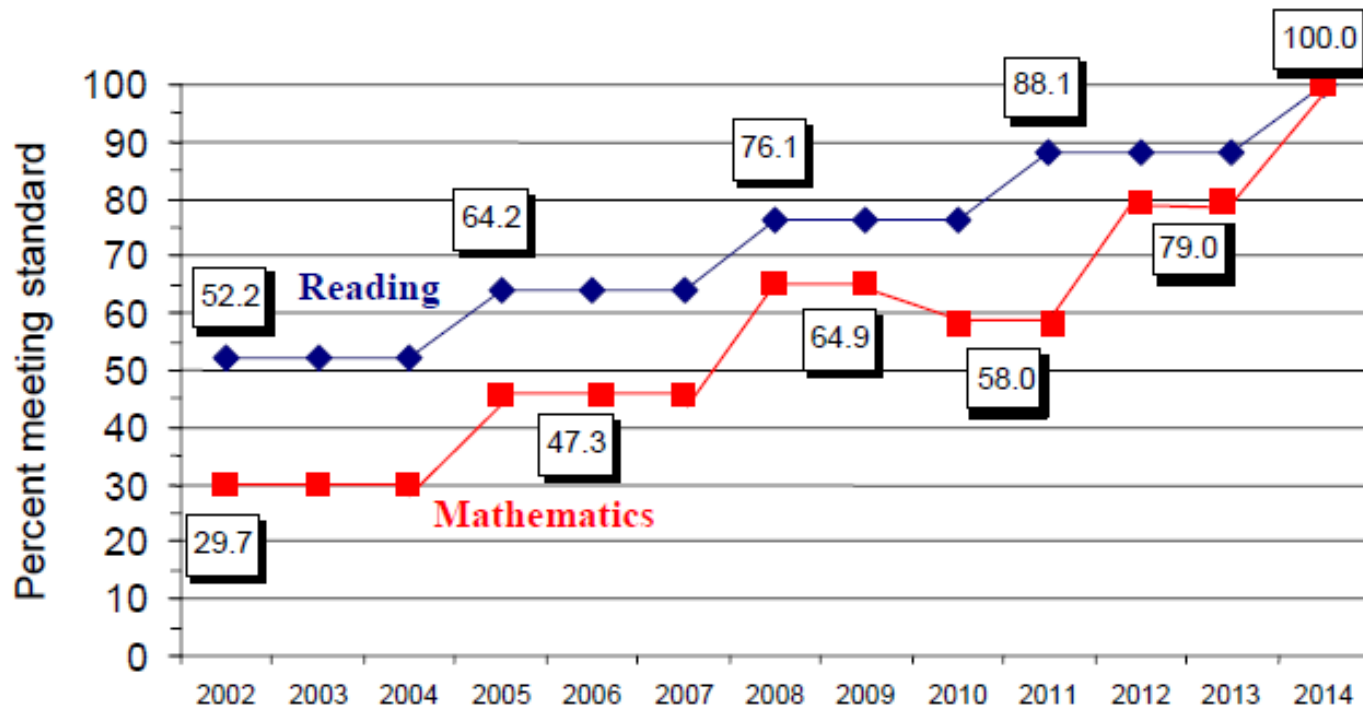


WASHINGTON ACHIEVEMENT  
AWARD WINNER



# ESEA Flexibility

Adequate Yearly Progress:  
Current System of Uniform Bars

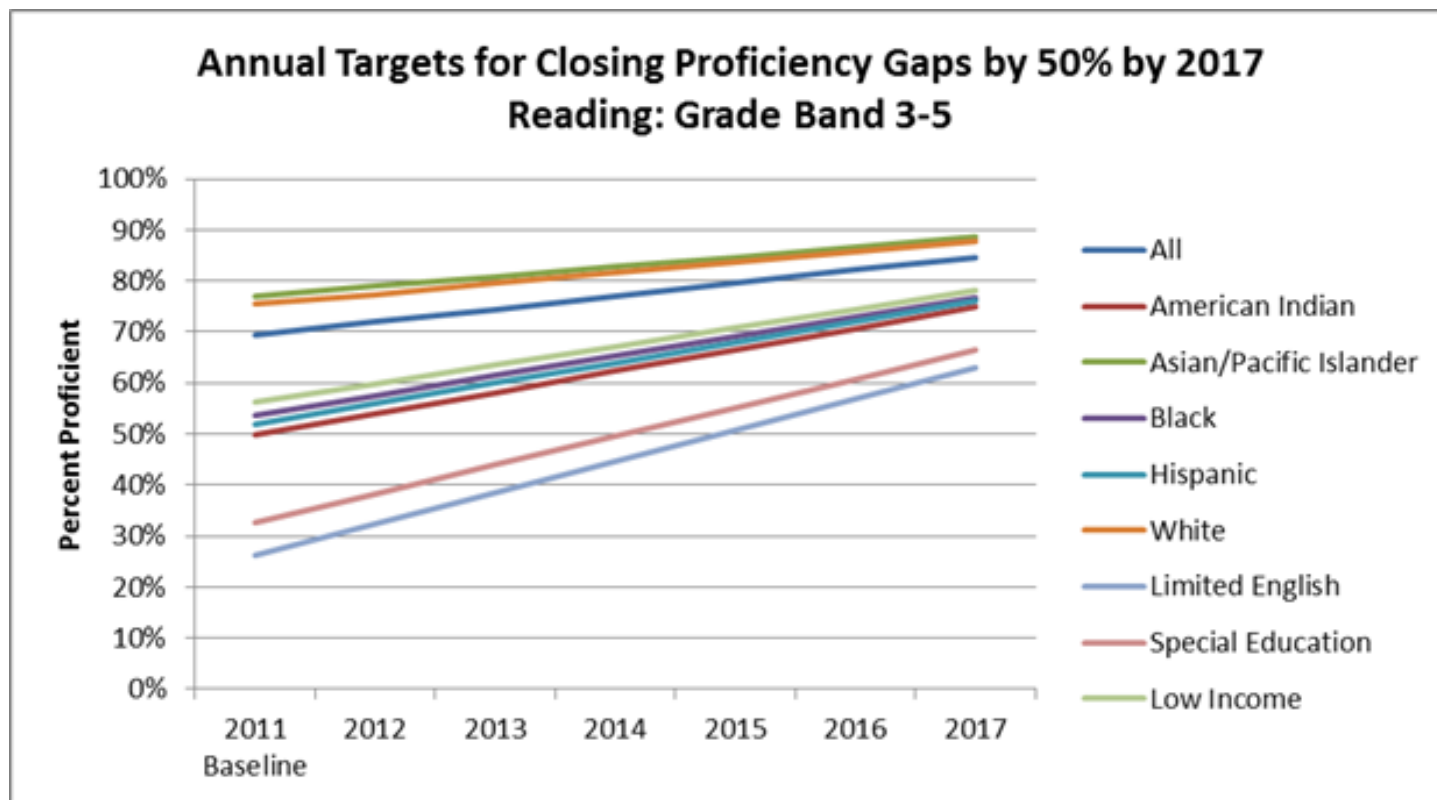


# ESEA Flexibility

Adequate Yearly Progress:

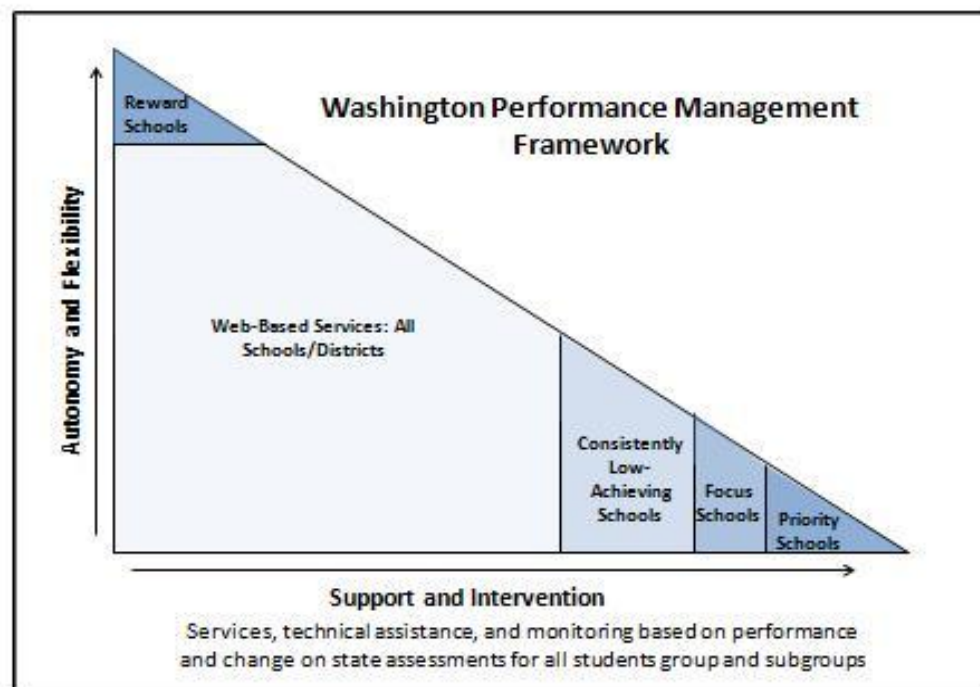
Proposed System

Targets set by subgroup, at building level



# Next Generation Index

- To identify reward, priority, focus schools
- US ED will not permit Peers
- Student growth percentiles in reading and math
- Disaggregated subgroups



# Student Growth

*District C: 2008 CSAP Math School Results*  
*Student Growth versus Student Achievement by Percent Free/Reduced Lunch*

