

Washington State | Jekjekin juon Rikadiwōjlok



**Wūnin
Tiploma eo:**

Rijikuul ro rebojak in tobrak ilo jikuul eo eutiejlak, elo aer jerbak, juon eo ewōr an maron ilo jikin eo an, im ewōr aer kapeel ilo an jab bojrak aer katak ilo aoleben mour ko aer.

(Lale Kakiēn ko an Washington emōj kōjejjēt kūtīer (Revised Code of Washington, RCW) 28A.230.090)

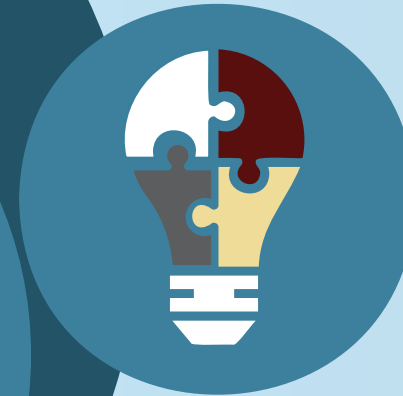
**Tōbrak ilo
Kapeel in
Mour/Make-obij**



**Ebojak ñan an
Make Tobrak &
Bōk Jelālokjen**



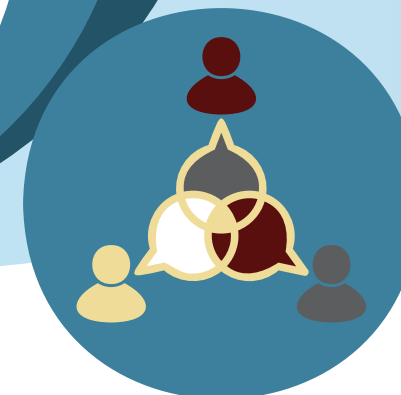
**Ejelā
Kōmadmōd**



**Ejab dike an Wōr
Oktak / Ekkarare
kain Armij**



**Ejelā kejbarok Ejmour
im Ainemmon**



**Ejejjēt an Leto
Letak Melele**

**Jejjēt an leto letak
melele ilo eloñ
wāween ko im ñan
eloñ armij ro**

**Ewōr an jelālokjen
kin lomak im
jimwe in katak ko**

**Kapeel & oktak ilo
an make etale
lomnak im bukōt
jemlok in abnōnō**

**Kajinet & kōjērbal
eddo ko an ilo
mour im ilo jikin
eo ej bed**

(Lale RCW 28A.150.210)





Juon Rikadiwōjlok ilo Washington State...

Ebōjak ñan an Make Tōbrak & Bōk Jelālokjen



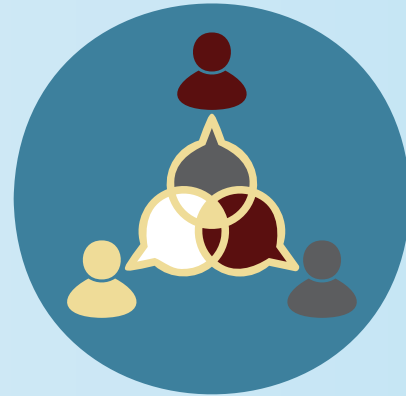
Ej kwalok an lōke emake
Kōjeral katak ko an Karōke kōtōbar ko an make ewōr tokjeir

Ejelā Kōmadmōd



Ejelā etale lomnak ko an Ekajur ilo an makūtkūt
Ejab dike an wōr lomnak ko rej make wōt

Ejejet an Leto Letak Melele



Jerbal ibben ro jet
Jelā jeral ibben ro jet
Kajinet ilo ien ewōr abañ

Ejelā kejbarok Ejmour im Ainemmon



Ebōjak in lale ejmour im ainemmon in enbwin im lomnak
Ewōr an Meanwōd
Kōlablok an jelā kajeen ro jet

Ejab dike an Wōr Oktak / Ekkarare kain Armij



Ej bōk kwōnaan ilo jukjukinbed eo
Ej jibañ eddo eo an ilo lal in
Ej kwalok emelele kin manit

Tōbrak ilo Kapeel in Mour/- Make-obij



Ej bōk kwōnaan Emelele kin jāan im riit ilo kein jeral kapeel
Ej ebōk mennin jibañ