

Country Roads

-John Denver

Almost heaven, West Virginia

Blue Ridge Mountains, Shenandoah River.

Life is old there older than the trees.

Younger than the mountains, blowin' like a breeze.

G Em/ D C G/G Em/D C G

Country Roads, take me home. To the place, I belong

West Virginia, mountain mama, Take me home.

Country Roads.

G D Em C/ G D C G

All my memories, gather round her,

Miner's lady stranger to blue water.

Dark and dusty painted on the sky

Misty taste of moonshine, teardrops in my eye.

Chorus

What are great schools?

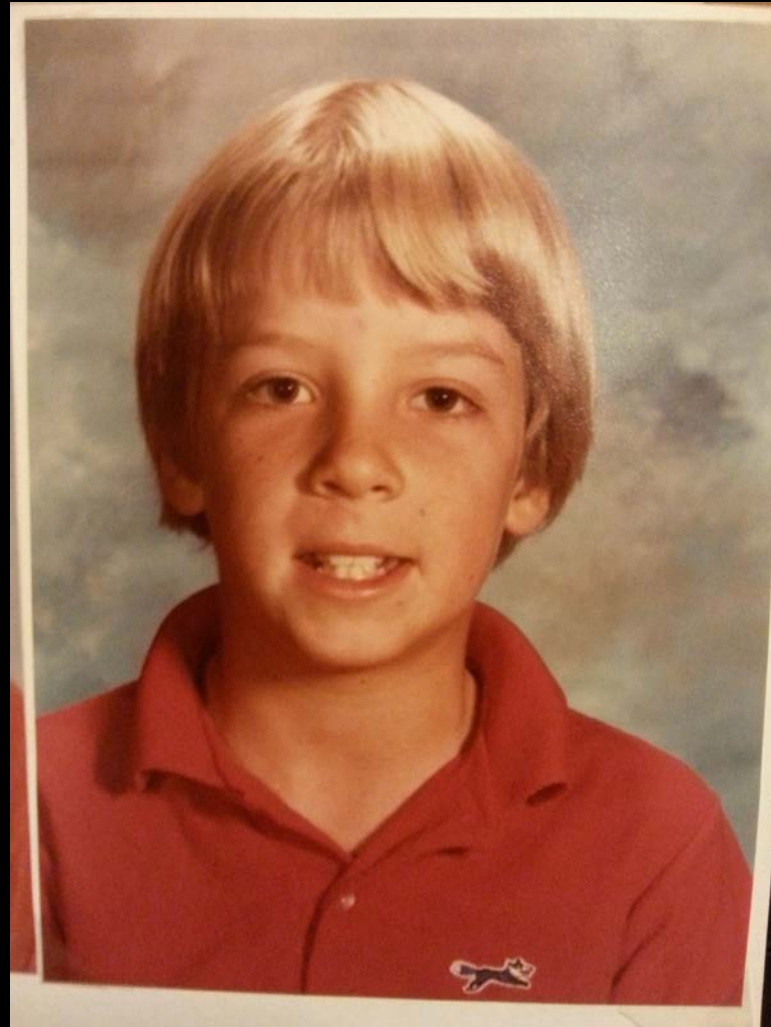
- Engaging places where students and adults want to be.
- Places where kids learn to grow into compassionate, thoughtful and high achieving people.

Lyon Terry, NBCT, M.Ed

2015 WA State Teacher of the Year



My fourth grade class picture



My shoes?



Redefining the goal of schools

To meet college and career readiness we don't just need students to be excellent readers, writers, mathematicians and thinkers, although we do want that. We need our students to be good people who can solve problems, work with others, persevere through difficult tasks, and overcome failure.

Ultimately, we want to create people with excellent character.

What do we want?

“ I want my students to be
great.”

- - Glen Landrus, 2015 Regional Teacher of the Year,
Asotin High School

What makes a great school?

1. Caring relationships
2. Relevant choices
3. High expectations

Letitriipple.org/scienceofcharacter

PERIODIC TABLE OF CHARACTER STRENGTHS

WHAT ARE YOUR STRENGTHS
AND WHICH DO YOU WANT TO DEVELOP?

WISDOM	COURAGE		JUSTICE	TEMPERANCE	TRANSCENDENCE
CREATIVITY	BRAVERY		SOCIAL RESPONSIBILITY	FORGIVENESS	APPRECIATION OF BEAUTY
CURIOSITY	PERSEVERANCE	HUMANITY	TEAMWORK	HUMILITY	GRATITUDE
LOVE OF LEARNING	HONESTY	LOVE	FAIRNESS	PRUDENCE	OPTIMISM
PERSPECTIVE	ENTHUSIASM	KINDNESS	LEADERSHIP	SELF-CONTROL	HUMOR
		SOCIAL INTELLIGENCE			SPIRITUALITY

CHARACTER STRENGTHS



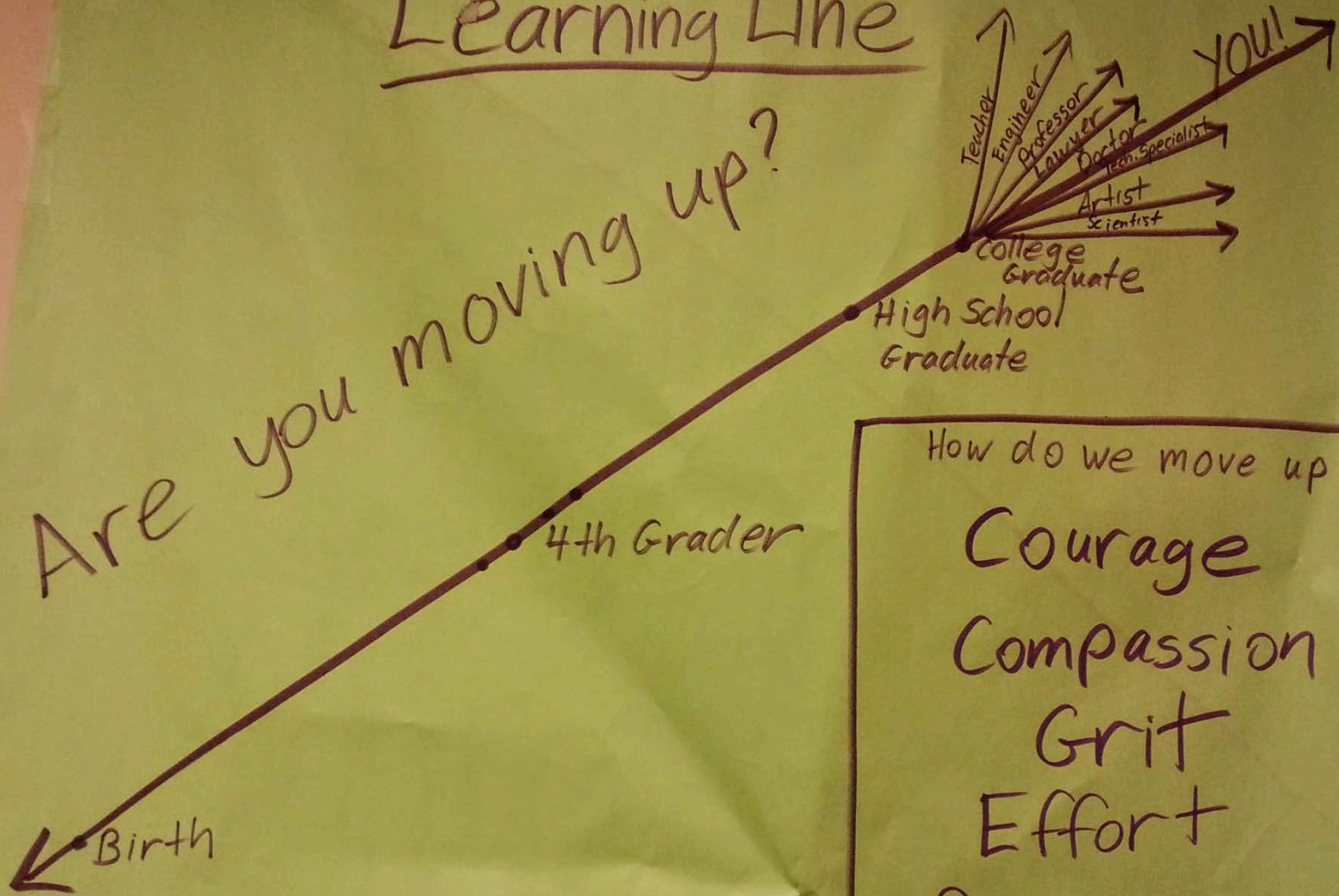
I'm gonna try
doing gymnastics
in front of
people

I have courage because I try new things
and go out of my comfort zone.

Name: caroline N.

Learning Line

Are you moving up?



How do we move up?

Courage

Compassion

Grit

Effort

Perseverance

What makes a great school?

1. Caring relationships
2. Relevant choices
3. High expectations

Edutopia: 5 Keys to social emotional learning

Bullying in WA State Schools

- 5,848 students in WA state were suspended from school for bullying in the 2012-2013 school year.
- 269 students were expelled for bullying.

» OSPI student behavior data, RCW 28A.300.285

What can you do at the SBE?

- Develop social and emotional learning standards.
 - Kansas and Illinois have already done so.
- Provide social and emotional professional development for all school staff.
- Require social and emotional training in teacher education programs.
- Lower class sizes to give kids more one on one time with caring adults.
- Advocate for more people in our school buildings who are trained to work with kids in this way, i.e. counselors, social workers, and other health professionals.

Washington State Law

- Section 28A.150.211 was added to the Basic Education Act in 1994. It considers character education an integral part of public education, but it left the responsibility for implementation and assessment to local school boards.

We are not doing enough to promote character education in our state.

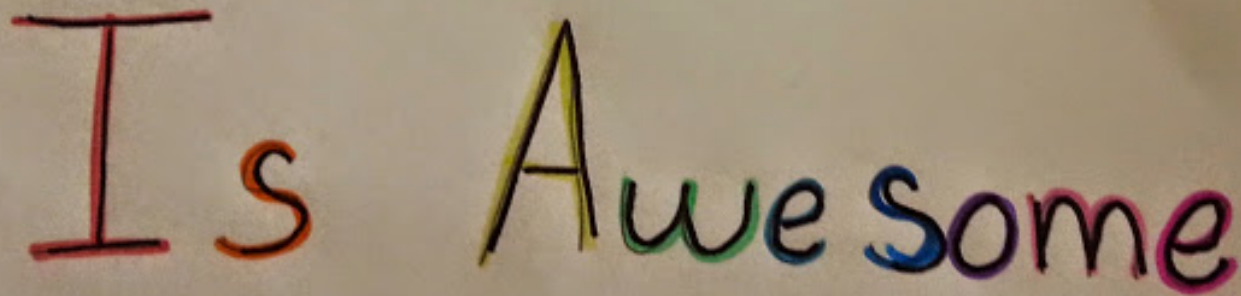
- “Even if there was no concern with the whole child and only a concern with the child’s intellectual development and academic accomplishments, educators would still want to make social-emotional and character development and a positive, respectful school culture and climate among their highest concerns.”

-Elias, Maurice, *Phi Delta Kappan*, November 2014

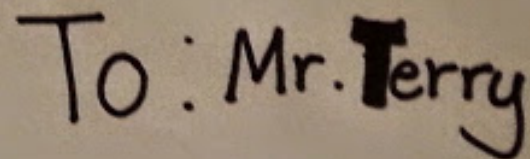
G r i t



I s A w e s o m e



To : Mr. Terry



WEA Video of Lyon Terry

[Click here for the video](#)

Thank you so much for your time.

Questions?