



THE WASHINGTON STATE BOARD OF EDUCATION

Governance | Accountability | Achievement | Oversight | Career & College Readiness

Title:	School Visits	
As Related To:	<input type="checkbox"/> Goal One: Effective and accountable P-13 governance. <input type="checkbox"/> Goal Two: Comprehensive statewide K-12 accountability. <input type="checkbox"/> Goal Three: Closing achievement gap.	<input type="checkbox"/> Goal Four: Strategic oversight of the K-12 system. <input checked="" type="checkbox"/> Goal Five: Career and college readiness for all students. <input checked="" type="checkbox"/> Other
Relevant To Board Roles:	<input type="checkbox"/> Policy Leadership <input checked="" type="checkbox"/> System Oversight <input type="checkbox"/> Advocacy	<input checked="" type="checkbox"/> Communication <input type="checkbox"/> Convening and Facilitating
Policy Considerations / Key Questions:	None	
Possible Board Action:	<input type="checkbox"/> Review <input type="checkbox"/> Adopt <input type="checkbox"/> Approve <input type="checkbox"/> Other	
Materials Included in Packet:	<input type="checkbox"/> Memo <input type="checkbox"/> Graphs / Graphics <input type="checkbox"/> Third-Party Materials <input type="checkbox"/> PowerPoint	
Synopsis:	<p>We will start with an introduction at the Wenatchee School District office then ride a school bus to visit Washington Elementary, Wenatchee High School, and an outreach center. Then, we will finish with lunch at the Wenatchee Valley Technical Skills Center. Much of the day will focus on career and college readiness programs.</p>	



THE WASHINGTON STATE BOARD OF EDUCATION

Governance | Accountability | Achievement | Oversight | Career & College Readiness

WASHINGTON ELEMENTARY Mr. Keith Collins, Principal

Washington Elementary School received an Achievement Award for Special Recognition – Reading Growth – for their 2012-2013 performance. School staff will present on the reading award and their intervention plan/process then board members will visit classrooms.

Student Demographics		
Enrollment		
October 2012 Student Count		578
May 2013 Student Count		578
Gender (October 2012)		
Male	313	54.2%
Female	265	45.8%
Race/Ethnicity (October 2012)		
American Indian/Alaskan Native	1	0.2%
Asian	12	2.1%
Asian/Pacific Islander	12	2.1%
Black / African American	4	0.7%
Hispanic / Latino of any race(s)	165	28.5%
White	372	64.4%
Two or More Races	24	4.2%
Special Programs		
Free or Reduced-Price Meals (May 2013)	261	45.2%
Special Education (May 2013)	65	11.2%
Transitional Bilingual (May 2013)	84	14.5%
Migrant (May 2013)	44	7.6%
Section 504 (May 2013)	10	1.7%
Foster Care (May 2013)	1	0.2%
Other Information (more info)		
Unexcused Absence Rate (2012-13)	42	0.1%

2012-13 MSP/HSPE Results (Administration Info)				
Grade Level	Reading	Math	Writing	Science
3rd Grade	83.5%	76.0%		
4th Grade	94.3%	52.8%	70.7%	
5th Grade	92.6%	66.3%		82.1%
Grade Level *		EOC Math Year 1		EOC Math Year 2
ALL Grades				
Grade Level *		EOC Biology		
ALL Grades				

Selected Index Results	2013 Reading Growth	2013 Math Growth	Index Tier
Washington Elementary School	70	41	Fair

WENATCHEE HIGH SCHOOL
Mr. Bob Celebrezze, Principal

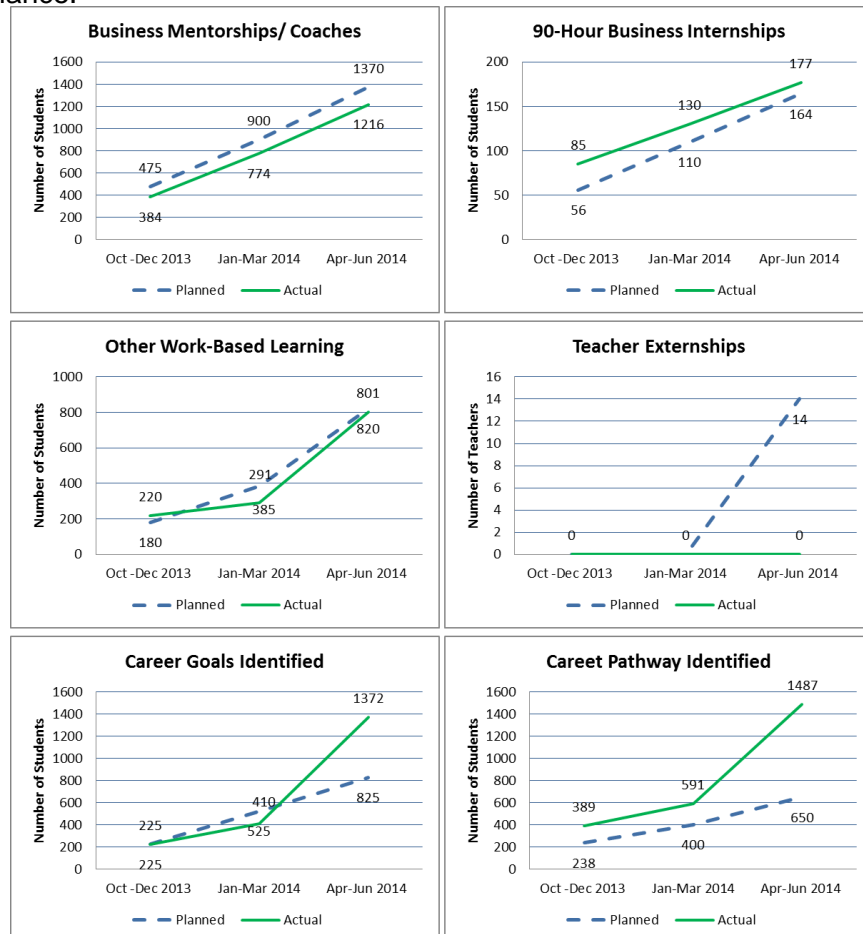
Wenatchee High School is taking part in the Career Readiness for a Working Washington pilot program. The pilot program at Wenatchee High School is supported by the Wenatchee Learns Connect Center and the Wenatchee Valley Technical Skills Center, the next site visits in your itinerary. The Board's work on the High School and Beyond Plan is related to Career Readiness for a Working Washington because it supports transitions from secondary school to career and college. With collaboration between OSPI and the Employment Security Department, Career Readiness is being piloted at the following sites:

- Evergreen
- Renton
- Spokane
- Wenatchee
- Yelm

Career Readiness for a Working Washington has the following goals of increasing:

- Career exploration for all students.
- Partnerships that will engage the community in providing career education opportunities for students in many formats.
- Work-based learning opportunities for students.

The graphs below use measures of Career Readiness for a Working Washington success in Wenatchee School District and North Central ESD with quarterly planned targets compared to actual performance.



WENATCHEE HIGH SCHOOL
Mr. Bob Celebrezze, Principal

Student Demographics		
Enrollment		
October 2012 Student Count		2,164
May 2013 Student Count		2,077
Gender (October 2012)		
Male	1,094	50.6%
Female	1,070	49.4%
Race/Ethnicity (October 2012)		
American Indian/Alaskan Native	11	0.5%
Asian	19	0.9%
Native Hawaiian / Other Pacific Islander	3	0.1%
Asian/Pacific Islander	22	1.0%
Black / African American	11	0.5%
Hispanic / Latino of any race(s)	876	40.5%
White	1,193	55.1%
Two or More Races	51	2.4%
Special Programs		
Free or Reduced-Price Meals (May 2013)	1,051	50.6%
Special Education (May 2013)	184	8.9%
Transitional Bilingual (May 2013)	86	4.1%
Migrant (May 2013)	389	18.7%
Section 504 (May 2013)	38	1.8%
Foster Care (May 2013)	0	0.0%
Other Information (more info)		
Adjusted 4-Year Cohort Graduation Rate (Class of 2012)		89.2%
Adjusted 5-year Cohort Graduation Rate (Class of 2011)		90.9%
College/University enrollment rates of graduates		

2012-13 MSP/HSPE Results (Administration Info)				
Grade Level	Reading	Math	Writing	Science
<u>10th Grade</u>	81.0%	See EOC below	79.3%	See EOC below
Grade Level *	EOC Math Year 1		EOC Math Year 2	
<u>ALL Grades</u>	35.6%		67.7%	
Grade Level *	EOC Biology			
<u>ALL Grades</u>	71.4%			

Selected Index Results	2013 Reading Growth	2013 Math Growth	Index Tier
Wenatchee High School	38	50	Fair

WASHINGTON LEARNS CONNECT CENTER

The following information is from the Washington Learns Connect Center website:

On August 28, 2014 the Wenatchee School District hosted a Grand Opening and Ribbon Cutting Ceremony for their new partnership center Wenatchee Learns Connect. Wenatchee Learns Connect was created in response to the Wenatchee Learns shared visioning campaign survey that the Wenatchee School District launched in 2011. The results of the survey showed overwhelming support for the development and creation of a partnership center that would serve as a liaison between schools and the community in an effort to personalize learning by expanding the role of educator to citizens, parents and business partners.

"We've spent the last 12 months taking the vision of over 4,000 members of our community and carefully crafting both a physical location and online resource for volunteers and business partners to connect with the Wenatchee school district to support personalized learning," says Wenatchee Learns Coordinator Diana Haglund. "Additionally we've constructed a new online portal – wenatcheelearns.com for parents, citizens and businesses to get connected with volunteer opportunities that match their time and talent."

Businesses and organizations can create company profiles in the portal that are linked to the District's new web-based career exploration system for high school students. Through these profiles businesses can share information about their products, services or careers or offer work-based learning opportunities, company tours, classroom presenters and answer questions on a virtual message board.

Through innovative programs like this "Businesses and organizations in Wenatchee can bridge the gap and nurture the future workforce by creating a profile or offering experiential learning opportunities to students. With an anticipated shortage of skilled workers in the future due to baby boomer retirement it's more important than ever to create a talent pipeline starting in K-12." says Haglund.

Online Tools

For Students - Career Cruising is a robust web-based career exploration system that includes learning style and aptitude assessments, career matchmaking, in-depth career research, postsecondary and training research tools, financial aid guidance, scholarship and college application tracking, and student portfolio management. Students can enhance their career research by connecting with real life work-based learning opportunity (job shadow, internship etc.) in our community through Wenatchee Learns Connect online. Test driving a career is the best way for student to find out if they are on the right path.

For Community Volunteers and Business Partners - Volunteers are more than just helping hands, they are truly our partners in education and provide a tremendous resource to our schools, students and district.

Anyone can be a partner. From parents to professionals everyone can make personalized learning part of the culture in our community by sharing their time and talent.

Through Wenatchee Learns Connect online portal our partners can customize their volunteer experience. Partners can assist in the classroom, be mentors, host job shadows and interns, serve as an online career coach and much more. Volunteers complete an online application then begin searching for opportunities that match their interests.

WENATCHEE VALLEY TECHNICAL SKILLS CENTER
Mr. Jon Torrence, Director

The following information is from the Wenatchee Valley Technical Skills Center website:

Wenatchee Valley Tech (formerly North Central Washington Technical Skills Center) was established in 1997 to serve the needs of students from:

- Cashmere School District
- Cascade School District
- Eastmont School District
- Entiat School District
- Lake Chelan School District
- Manson School District
- Pateros School District
- Quincy School District
- Moses Lake School District
- Waterville School District
- Wenatchee School District

Wenatchee Valley Tech is...

- An extension of your local high school located at an off-campus training site.
- An opportunity for students ages 16 to 20 and/or those who are in grades 11 & 12 to receive highly technical job training.
- An opportunity to get a jump-start on a postsecondary education, apprenticeships, technical and two/four year colleges or universities.
- Preparation for immediate entry-level employment.
- Staffed by outstanding instructors from industry with many years of experience in their fields.

The College Connection - We work closely with Wenatchee Valley College to provide advanced placement and credits for high school students. Currently, many programs are connected to postsecondary training.