



Washington State Bilingual Education

SBE Achievement and Accountability Workgroup

December 9, 2013

Newly Transitioned Bilingual Students

Bonus Year Funding for last year's transitioning students

Eligible Students Scored Level 4 on WELPA 2013	<ul style="list-style-type: none">• Continue in district after transitioning.• Transfer from another district.• Previously waived TBIP services.
Not Eligible Students	<ul style="list-style-type: none">• Exited ELLs at private schools participating in Title III.• Native American students who were eligible for Title III but not TBIP.• Exited prior to 2013.

Exited TBIP students no longer qualify for Title III.

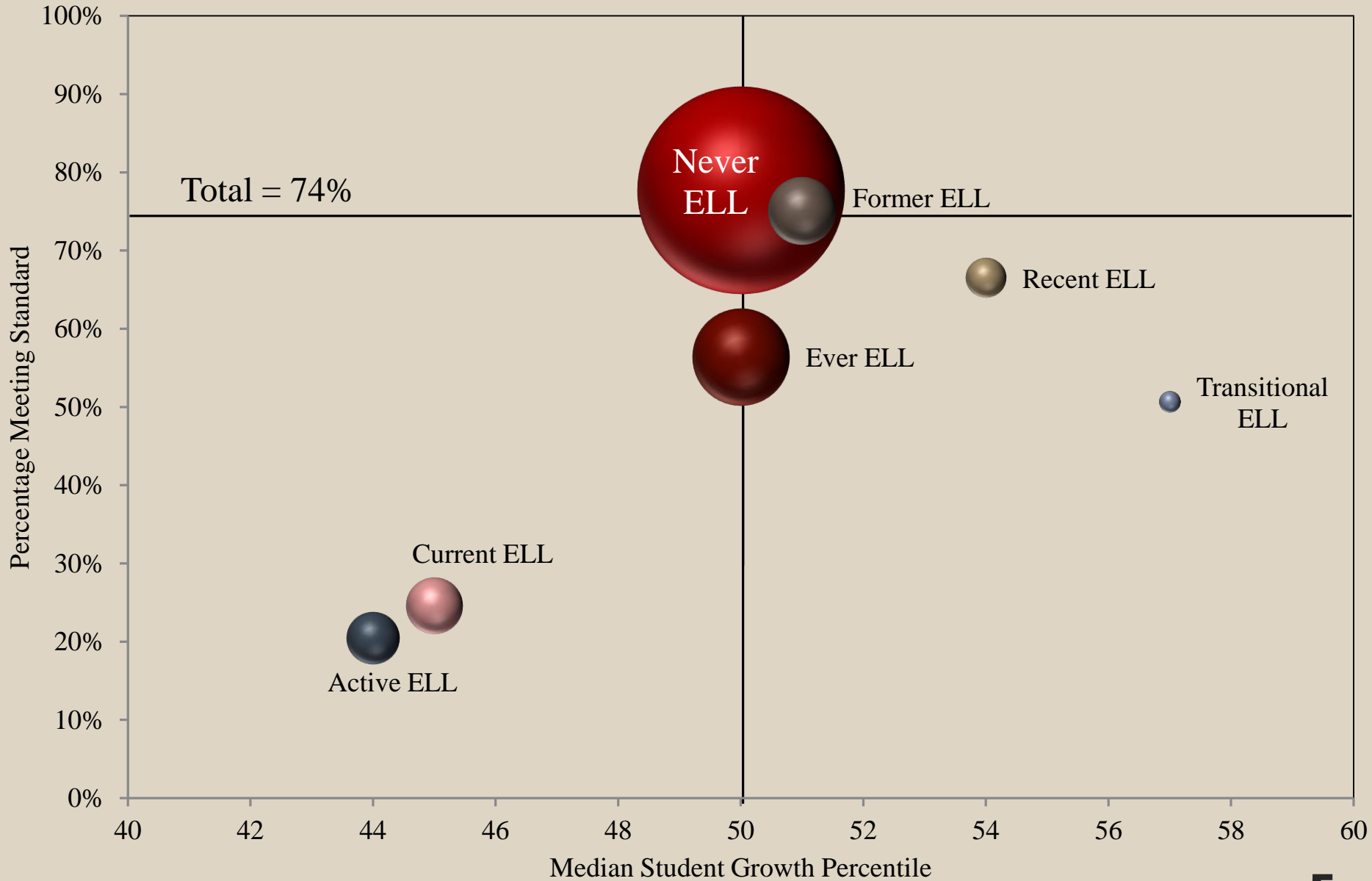
Bonus Year Funding for last year's transitioning students

- Meeting individual student needs
- Language development or academic support
- Meeting the areas of greatest need with available funding
- Allowable activities
 - ✓ Expanded access to homework supports
 - ✓ Professional development for content teachers
 - ✓ Other innovative district supports designed to assist in reaching grade-level performance in academic subjects.

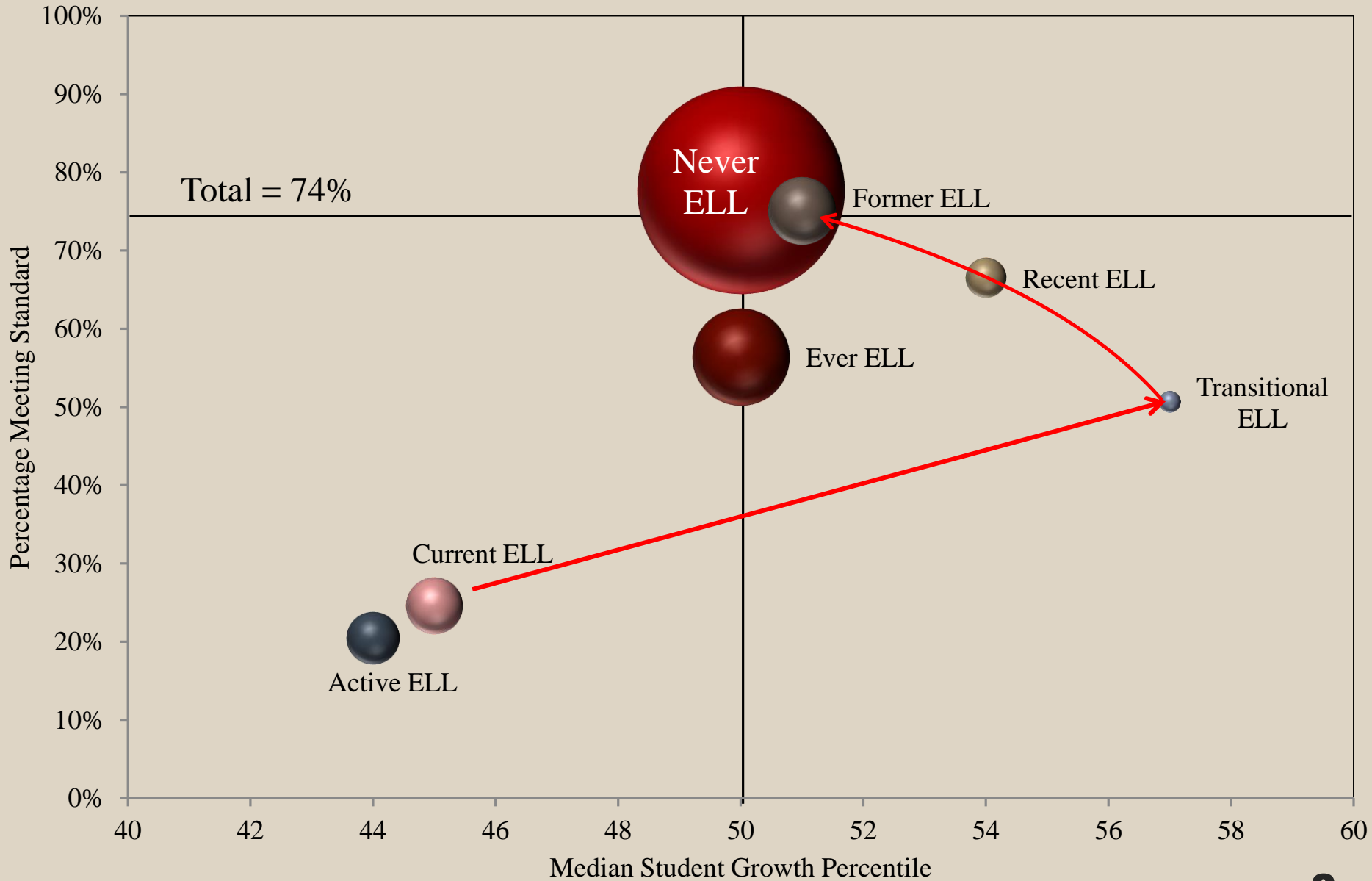
Section 514 of the Third Engrossed Substitute Senate Bill 5034

<http://www.k12.wa.us/bulletinsmemos/Bulletins2013/B038-13.pdf>

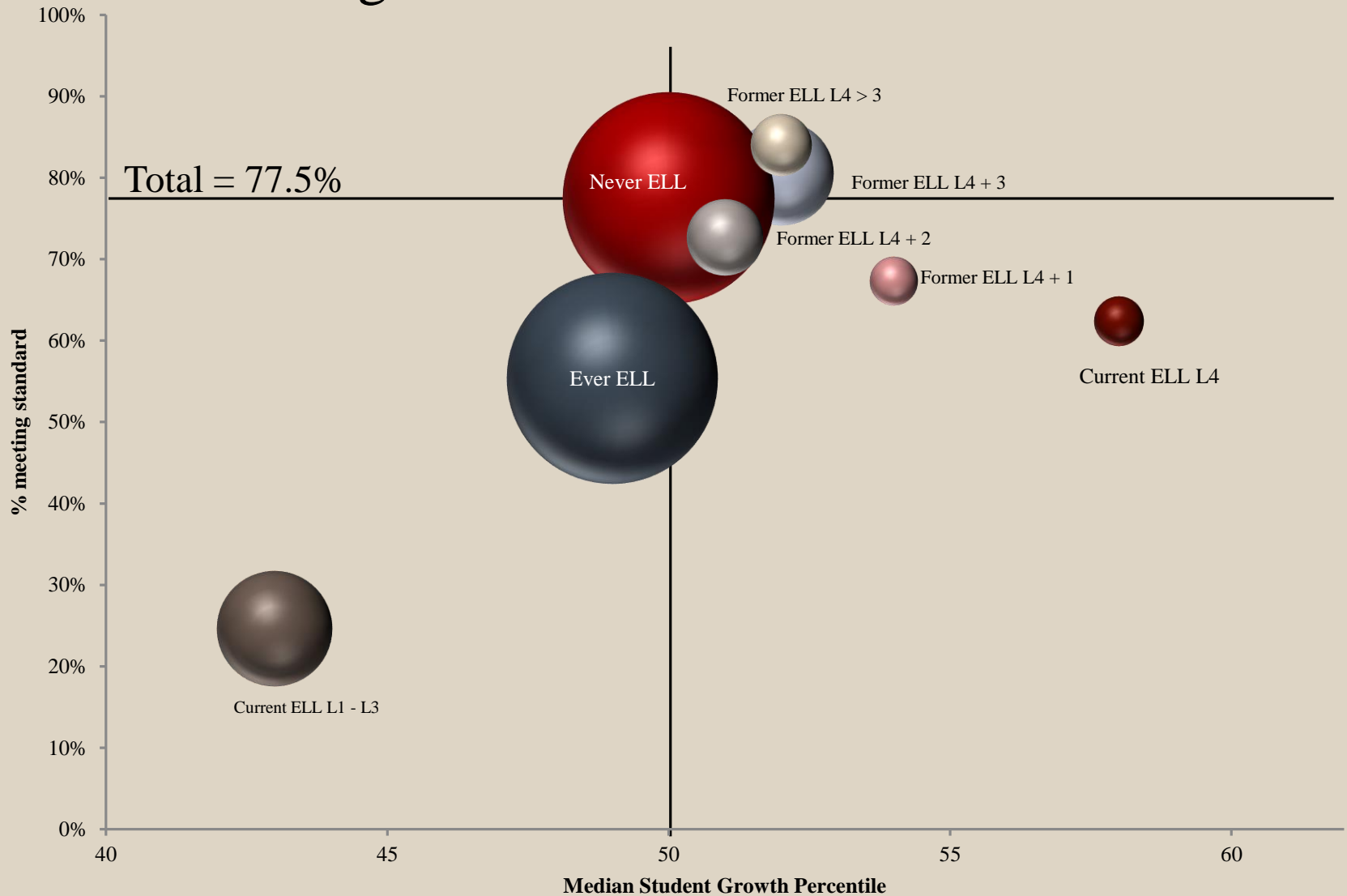
Reading Growth and Achievement 2012



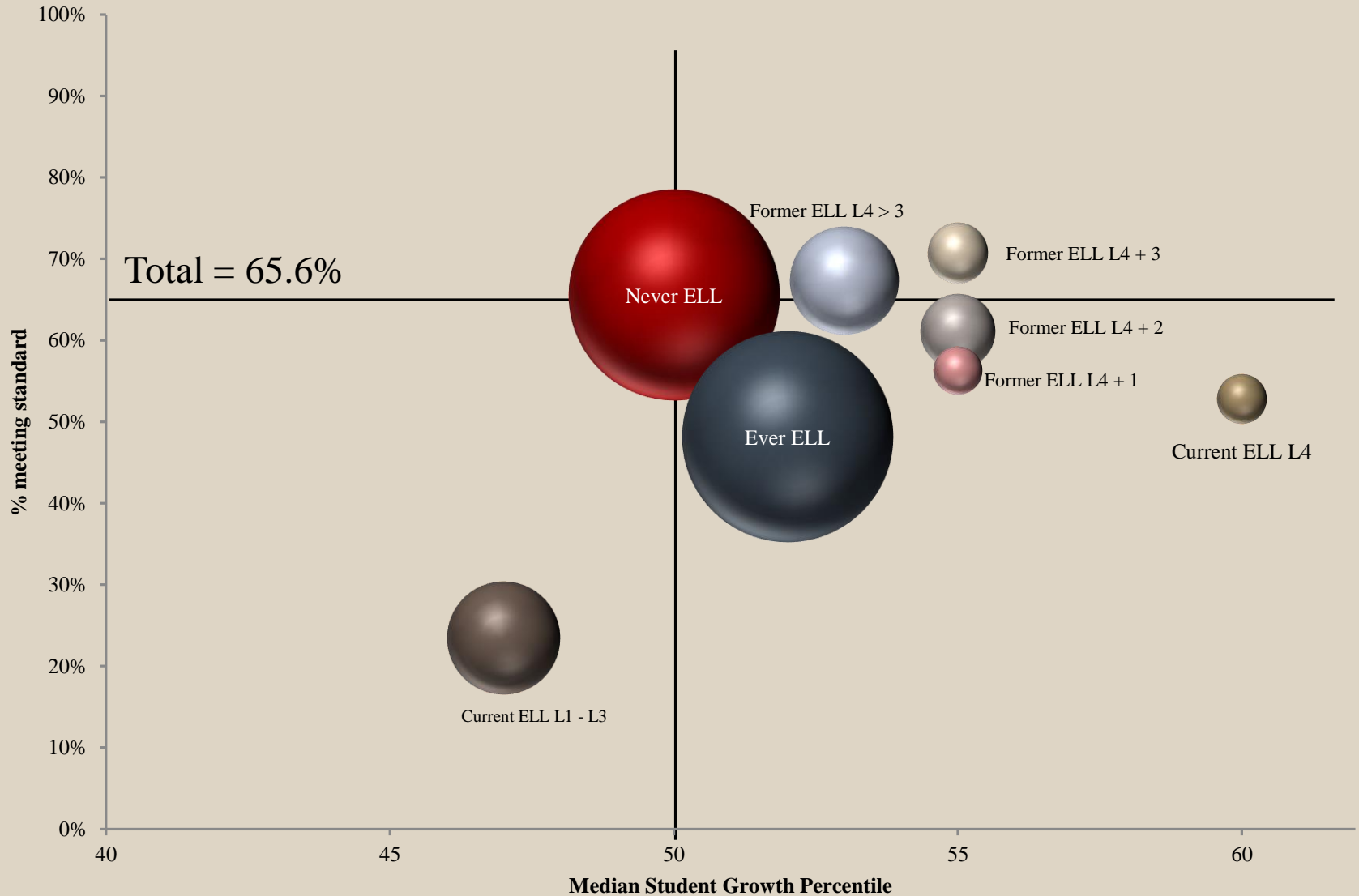
Reading Growth and Achievement 2012



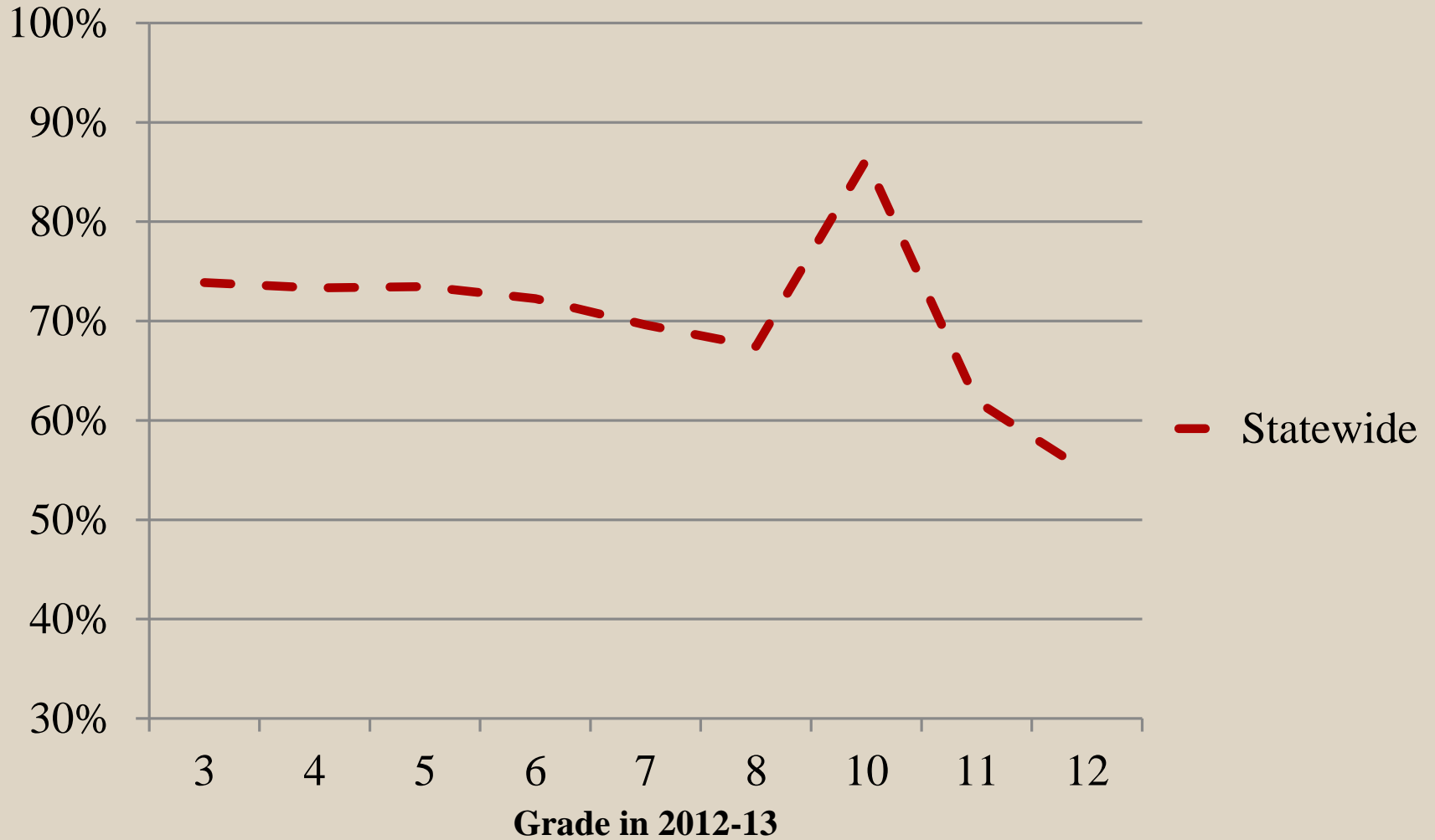
Reading Growth and Achievement 2013



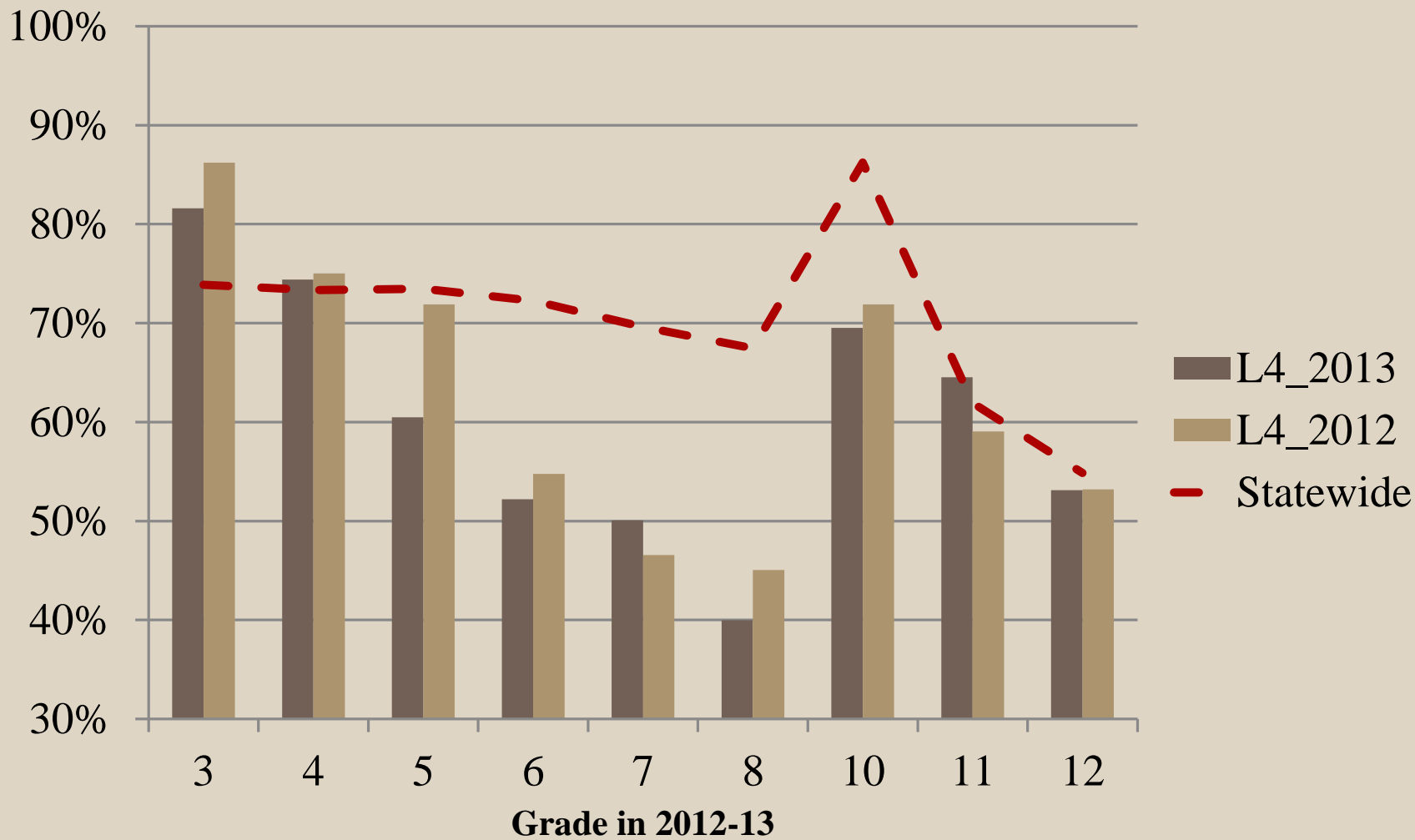
Math Growth and Achievement 2013



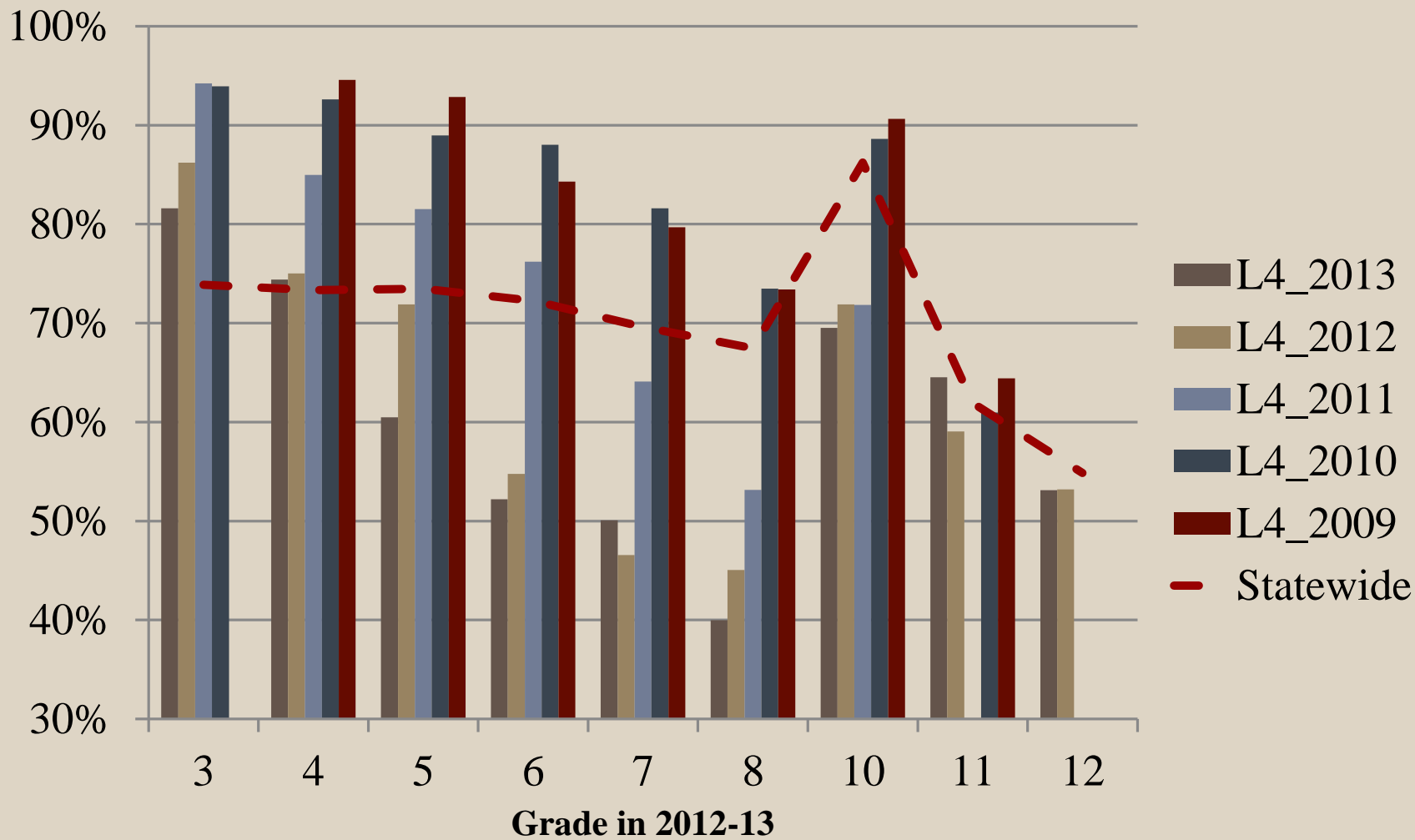
% Meeting MSP/HSPE Reading Standard



% Meeting MSP/HSPE Reading Standard



% Meeting MSP/HSPE Reading Standard



Determining high performing schools

Accountability Metric Options

Active ELLs

Percent increasing English Proficiency (AMAO-1)

Percent achieving English Proficiency (AMAO-2)

Percent meeting standard in Math & Reading (AMAO-3)

Former ELLs

Percent meeting standard in Math & Reading

Student Growth Percentile in Math & Reading

Determining high performing schools

Accountability Metric Options

Metric Limitations

Active ELLs

Percent increasing English Proficiency (AMAO-1) **Requires 2 tests & small # of students**

Percent achieving English Proficiency (AMAO-2) **Function of students entering district**

Percent meeting standard in Math & Reading (AMAO-3)

Assessments not valid for LEP students

Former ELLs

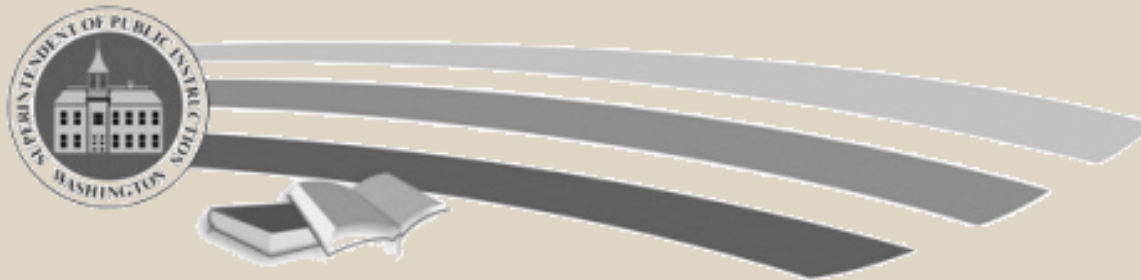
Percent meeting standard in Math & Reading

Function of grade-specific differences

Student Growth Percentile in Math & Reading

Requires 2 tests & small # of students

Not transparent & excludes K-2nd, 9th



Transitional Bilingual Instruction Program

Prepared by

Paul McCold, PhD, Administrative Program Specialist

paul.mccold@K12.wa.us phone (360) 725-6147