

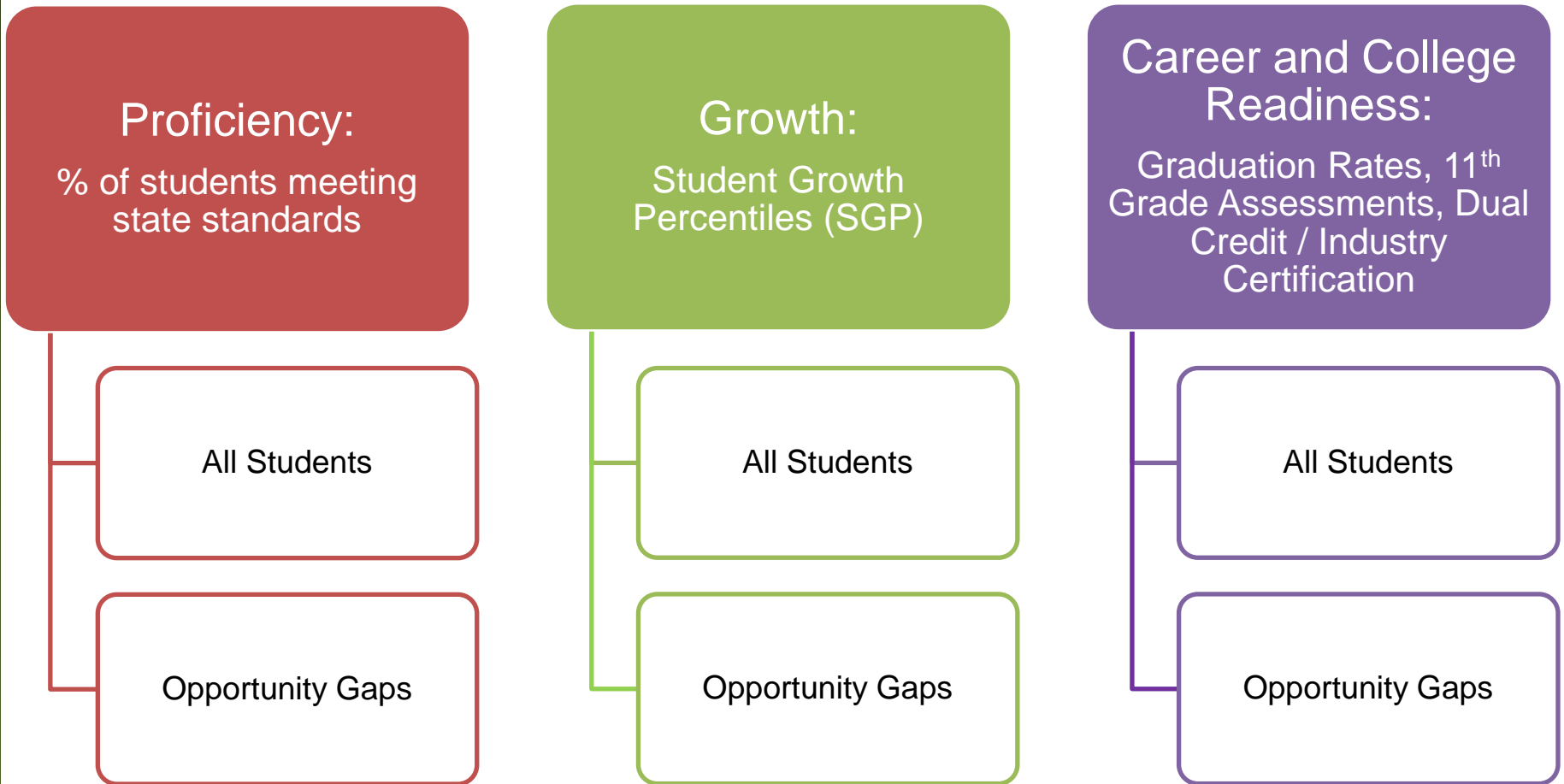
Achievement Index Revision: Achievement and Accountability Workgroup Input and Staff Recommendations

Sarah Rich, SBE Policy Director
May 8, 2013

Decision Timeline

Date	Topic/Decision
2012 July	<ul style="list-style-type: none"> • Accountability Resolution • Achievement and Accountability Workgroup Charter
September	<ul style="list-style-type: none"> • Theory of Action
November	<ul style="list-style-type: none"> • Approved Performance Indicators: <ul style="list-style-type: none"> ○ Proficiency ○ Student Growth Percentiles (SGP) ○ College and Career Readiness (CCR)
2013 January	<ul style="list-style-type: none"> • Prototype Index, including CCR sub-indicators and focus on opportunity gaps • Subgroup disaggregation
March	<ul style="list-style-type: none"> • Phase-In Plan for CCR sub-indicators • Using the Index Rating to determine federal designations
May	<p>This meeting:</p> <ul style="list-style-type: none"> • Approval of Model Index scoring • Weighting performance indicators • Cut points for tiers
Special Board meeting June	Approve to submit Revised Index to USED
September	Adopt final Revised Index

Revised Index Prototype



Student Growth Percentiles

- Assessment Overview
- State Testing
- Test Administration
- WAAS-Special Ed.
- Teacher Resource Tool
- Assessment Coordinators
- EDS-WAMS Login
- Washington English Language Proficiency Assessment
- Data/Reports
 - Research Reports
 - Technical Reports
- Item Analysis

Assessment / Testing

Student Growth Percentiles FAQ


This page provides Washington school district and ESD personnel with an overview of student growth percentiles, a new method of measuring student academic growth introduced by OSPI in March 2013.

This page will answer the following questions:

- [What is a student growth percentile?](#)
- [How are student growth percentiles calculated?](#)
- [To whom are students being compared? What is an academic peer?](#)
- [What is a median growth percentile?](#)
- [Can we still compare scores across years if the tests change?](#)
- [Can high scoring students still demonstrate growth?](#)
- [Which students get growth percentiles and which students are included in school and district medians?](#)
- [How do we interpret a growth percentile in 10th grade Reading or Algebra if there was no score in 9th grade?](#)
- [What can student growth percentiles tell us?](#)
- [What kind of data will districts receive and when?](#)
- [How will student growth percentile data be used?](#)
- [How will the data be made available?](#)
- [Will student growth percentiles be reported publicly?](#)
- [Where can I get more information?](#)

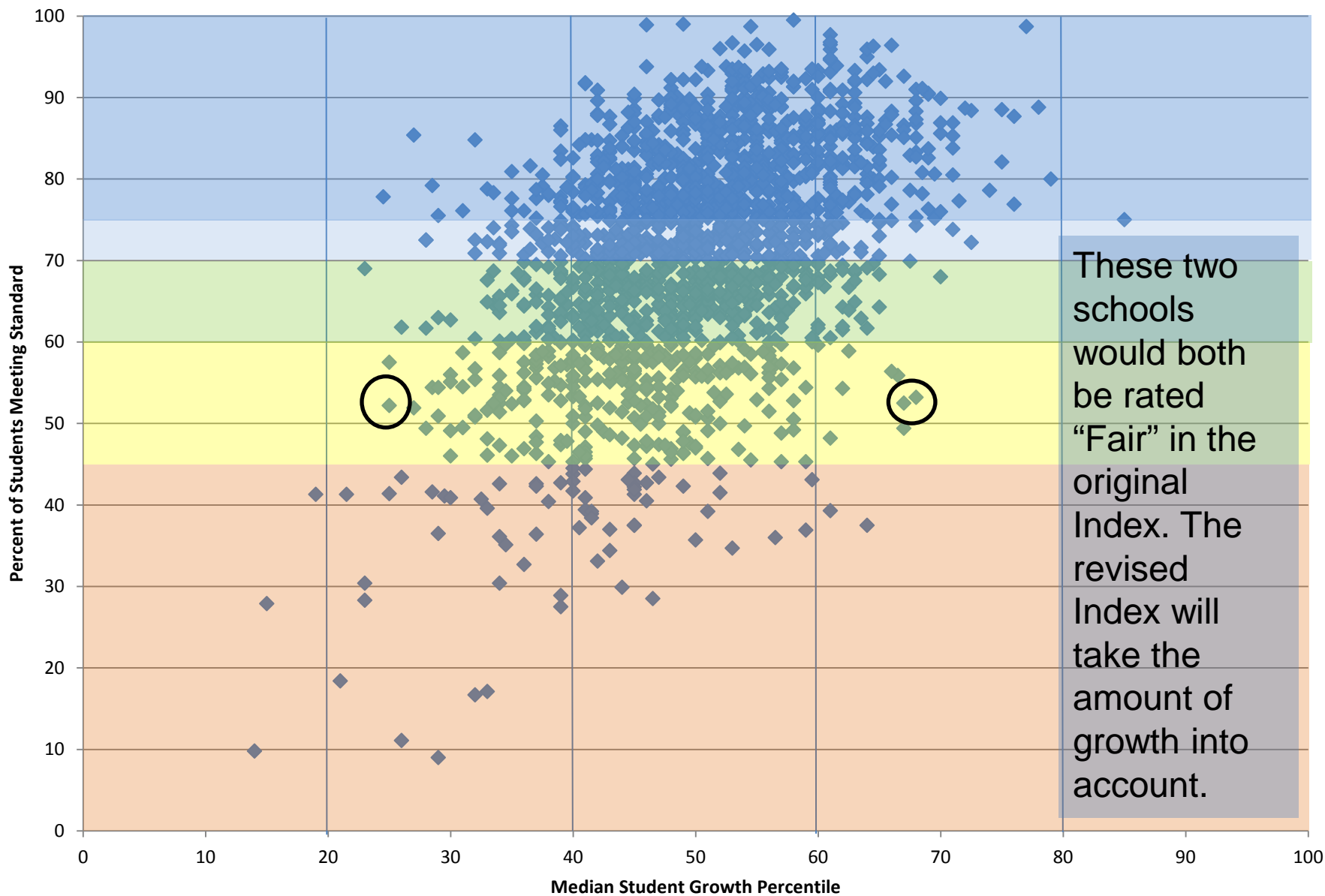
An Introduction to Student Growth Percentiles

Student Growth Percentiles Explained: Presented...

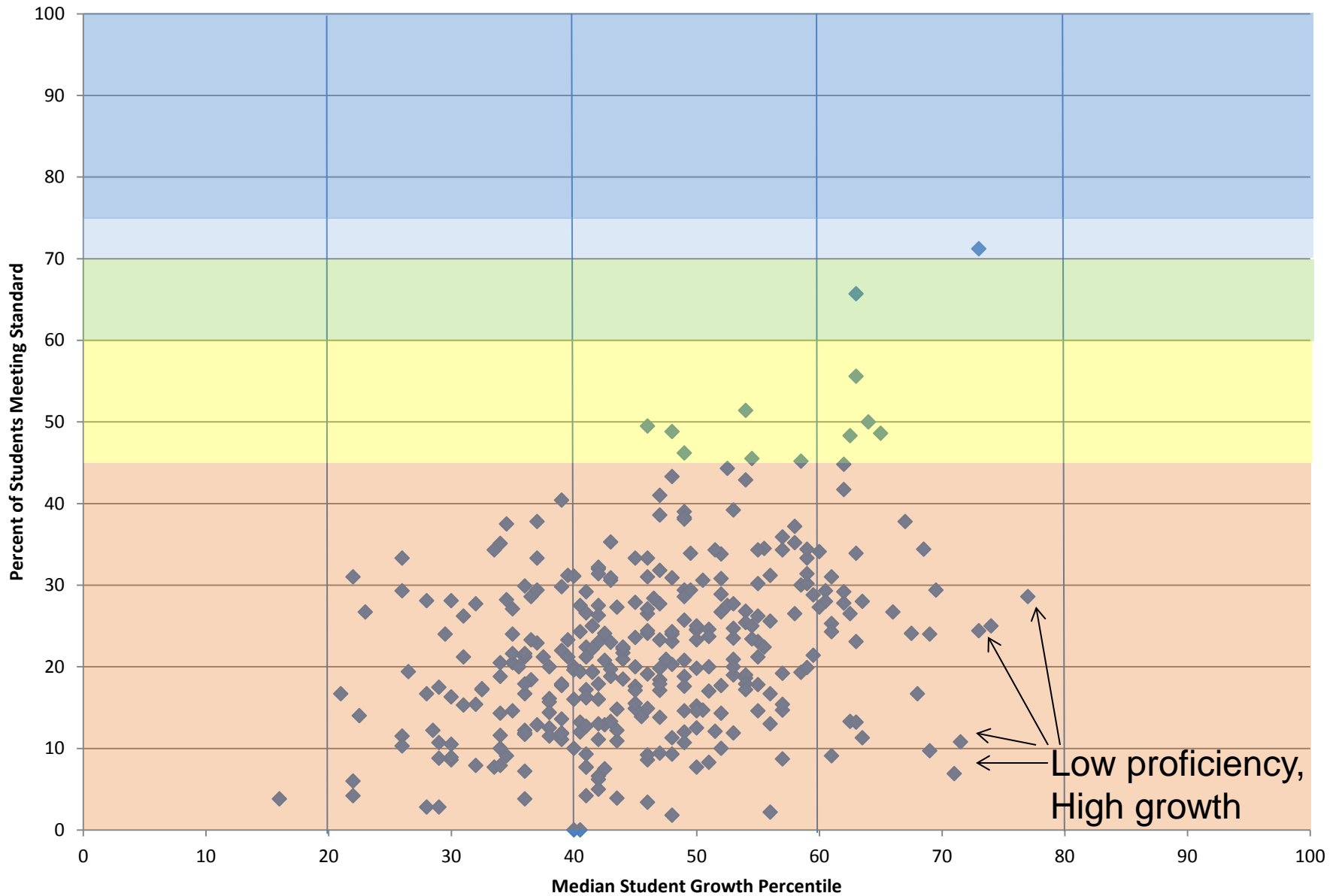


http://www.youtube.com/watch?v=6e_j9QwjVWk&feature=player_embedded

All - Reading Proficiency and Growth



ELL - Reading Proficiency and Growth



Revised Index Scoring

- Ten point scale for Proficiency, Career and College Readiness
- Scoring Student Growth Percentiles
- *All Students* – half of overall Index score
- *Targeted Subgroups* (e.g. Opportunity Gap) – half of overall Index score

Revised Index Model Summary

		Reading	Writing	Math	Science	Average
Proficiency (10 possible points)	All Students	7.0	8.0	7.0	6.0	7.0
	Targeted Subgroups	5.0	5.0	5.0	4.3	4.8
		Reading	Math	Average	Doubled for 10-point scale	
Growth (5 possible points)	All Students	4.0	3.0	3.5	7.0	
	Targeted Subgroups	3.0	3.2	3.1	6.2	
		Grad Rates	Dual/Ind Cert	11th Grade Assessments	CCR Overall	
College and Career Readiness (10 possible points)	All Students	6.0	To be phased in		6.0	
	Targeted Subgroups	3.5			3.5	
Overall Index Rating (10 possible points)						5.75

Weighting is applied here

This example: equal weighting

Proficiency Detail

Proficiency					
Student Groups	Reading	Writing	Math	Science	Average
All	67.8	70.8	67.3	53.9	65.0
Asian					
White	71.3	72.7	70.7	56.3	67.8
American Indian/Alaska Native					
Pacific Islander/Native Hawaiian					
Black/African American					
Hispanic	70.0	71.4	65.0	68.8	68.8
Two or more Races					
Limited English	4.8	9.5	19.0	9.5	10.7
Special Education	40.0	38.6	31.7	38.3	37.2
Low Income	64.4	66.5	62.0	51.5	61.1
Targeted Subgroups	49.8	52.0	47.7	42.3	47.9

Proficiency Ratings

Proficiency					
Student Groups	Reading	Writing	Math	Science	Average
All	7	8	7	6	7.0
Asian					
White	8	8	8	6	7.5
American Indian/Alaska Native					
Pacific Islander/Native Hawaiian					
Black/African American					
Hispanic	8	8	7	6	7.0
Two or more Races					
Limited English	1	1	2	1	1.3
Special Education	5	4	4	4	4.3
Low Income	7	7	7	6	6.8
Targeted Subgroups	5.0	5.0	5.0	4.3	4.8

% Met or Exceeded Standard	Index - Current	Index - Revised
90-100	7	10
80-89.9	6	9
70-79.9	5	8
60-69.9	4	7
50-59.9	3	6
40-49.9	2	5
<40	1	4
		3
		2
		1

Growth Detail and Ratings

Median Student Growth Percentiles				
Student Groups	Median SGP- Reading	Reading Rating	Median SGP - Math	Math Rating
All	61	4	47	3
Asian	64	4	60	4
White	57	4	51	3
American Indian/Alaska Native				
Pacific Islander/Native Hawaiian				
Black/African American	42	2	52	3
Hispanic	53	3	37	2
Two or more Races				
Limited English			71	6
Special Education	56	4	40	2
Low Income	48	3	48	3
Targeted Subgroups		3.0		3.2

Median SGP	Index Score (Doubled for 10-point scale)
<34	1
34-44	2
45-55	3
56-66	4
>66	5

Career and College Readiness Detail and Ratings

College and Career Readiness					
Student Groups	4 year Graduation	5 year Graduation	Rating	Dual Credit/Industry Certification	11th Grade Career and College Readiness
All	76.6	78.2	6		
Asian	82.9	85.2	8		
White	80	81.3	7		
American Indian/Alaska Native	56.5	58.8	2		
Pacific Islander/Native Hawaiian	66.2	65.7	4		
Black/African American	65.4	68.6	4		
Hispanic	64.5	66.4	4		
Two or more Races	73.6	72.9	5		
Limited English	52.5	56.6	2		
Special Education	56.6	60.7	3		
Low Income	65.2	66.8	4		
Targeted Subgroups			3.5		

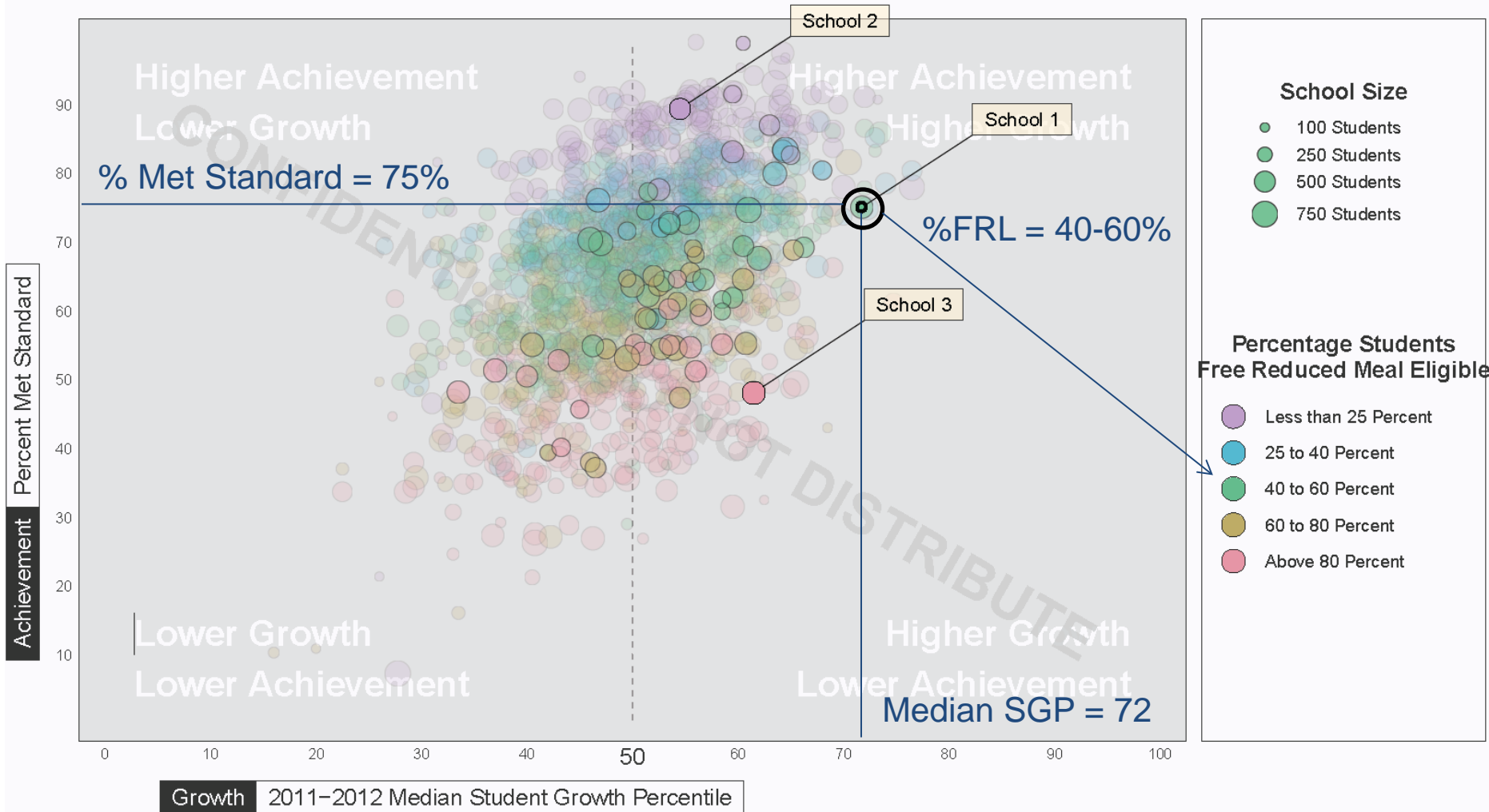
Graduation Rate	Index - Current	Index - Revised
95-100	7	10
90-94.9	6	9
85-89.9	5	8
80-84.9	4	7
75-79.9	3	6
70-74.9	2	5
<70	1	4
60-64.9		3
55-59.9		2
<55		1

Data Exercise

Information	School 1	School 2	School 3
% FRL (pg. 1, range, legend)			
% LEP (pg. 3, range, legend)			
Median growth percentile (pg. 1, estimate, x-axis)			
Percent met standard (pg. 1, estimate, y-axis)			
Tier label in the current Index (pg. 2, legend)			
Score in 10 point Index – Equal weighting of growth and achievement (pg. 2, estimate, y-axis)			
Score in 10 point Index – Growth weighted more heavily than achievement (pg. 3, estimate, y-axis)			

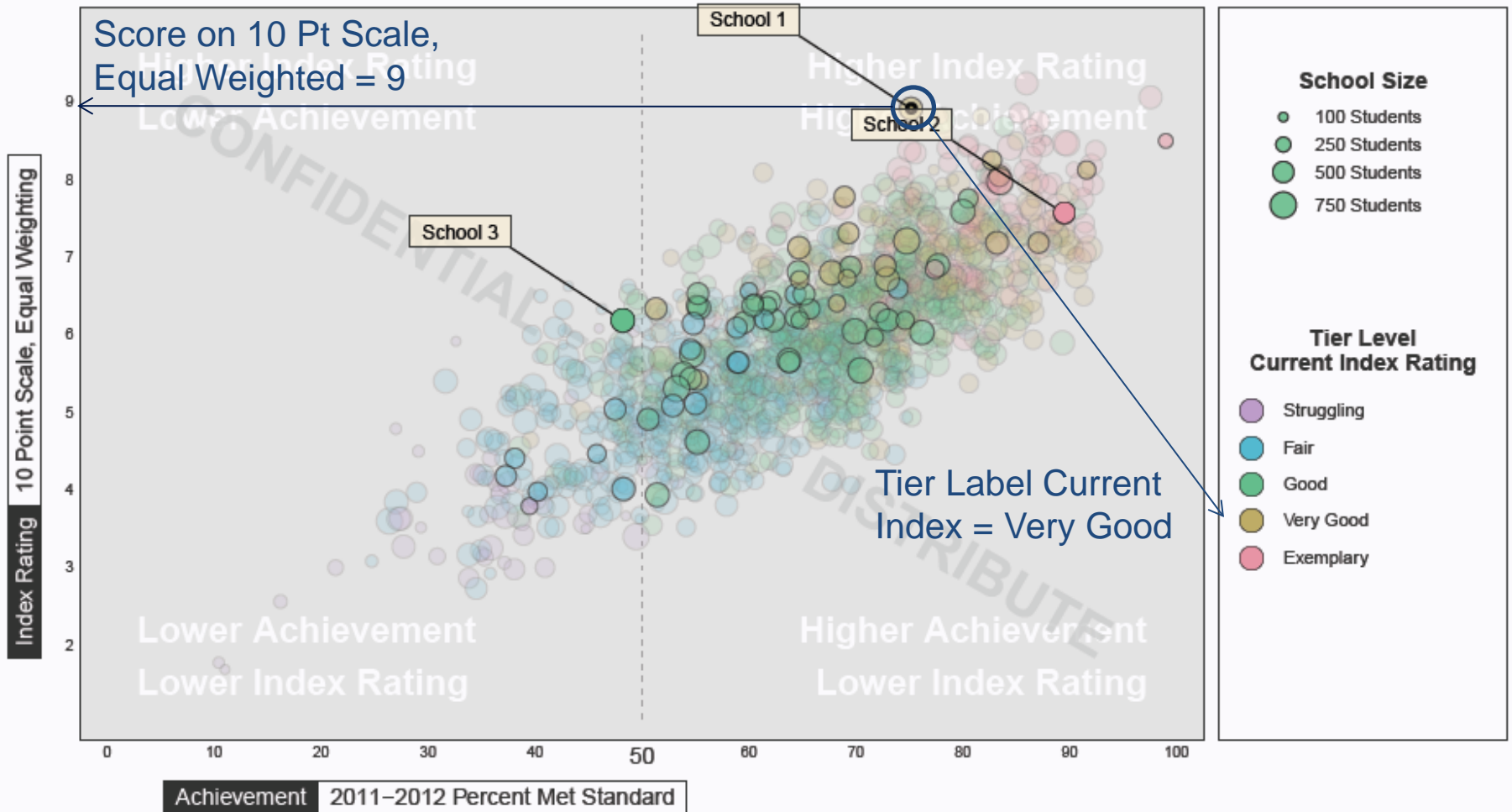
Growth and Achievement

Primary Schools Performance
Index Performance Indicators



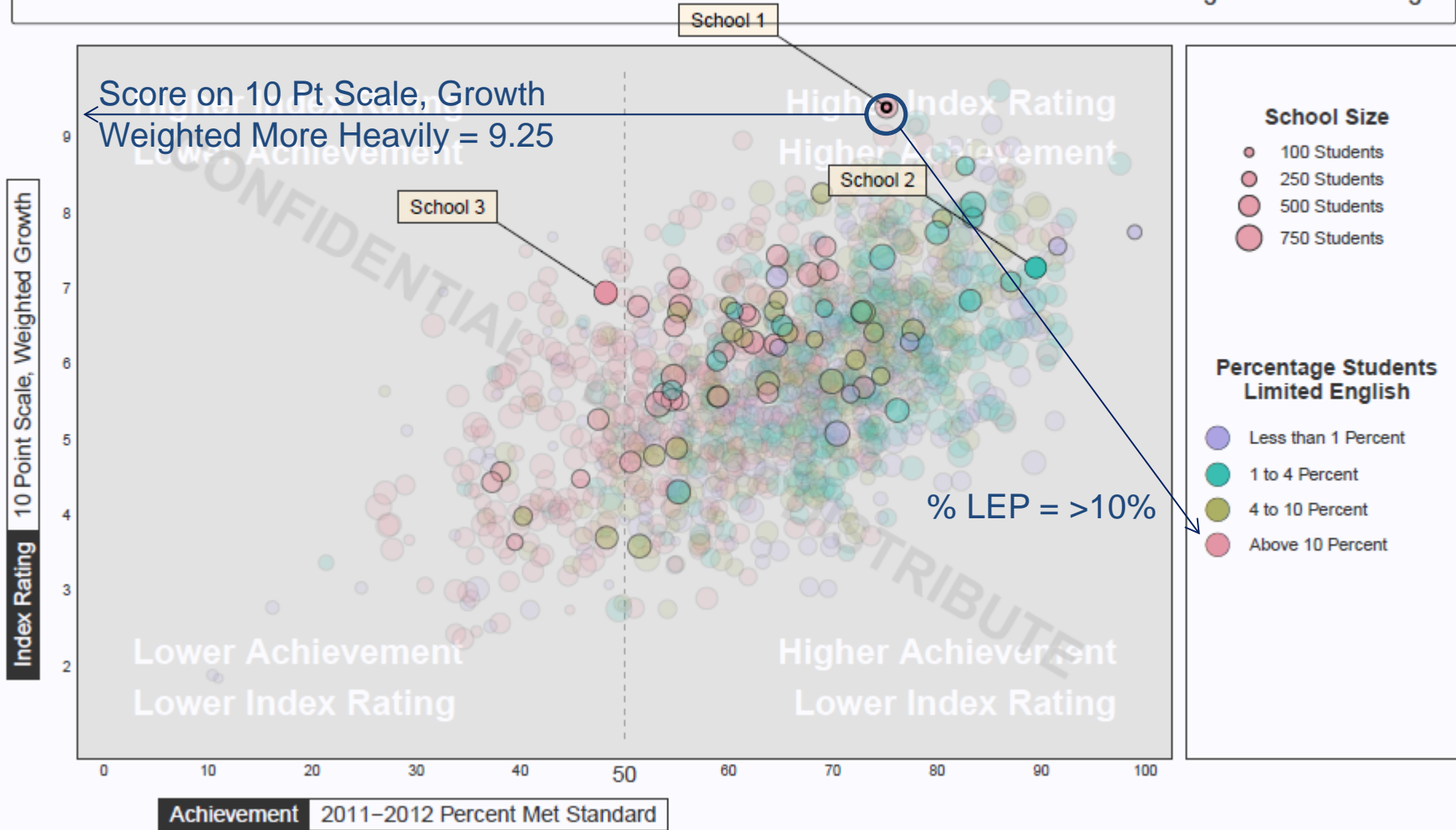
Achievement and Index Rating

Primary Schools Performance
Equal Weight Index Rating



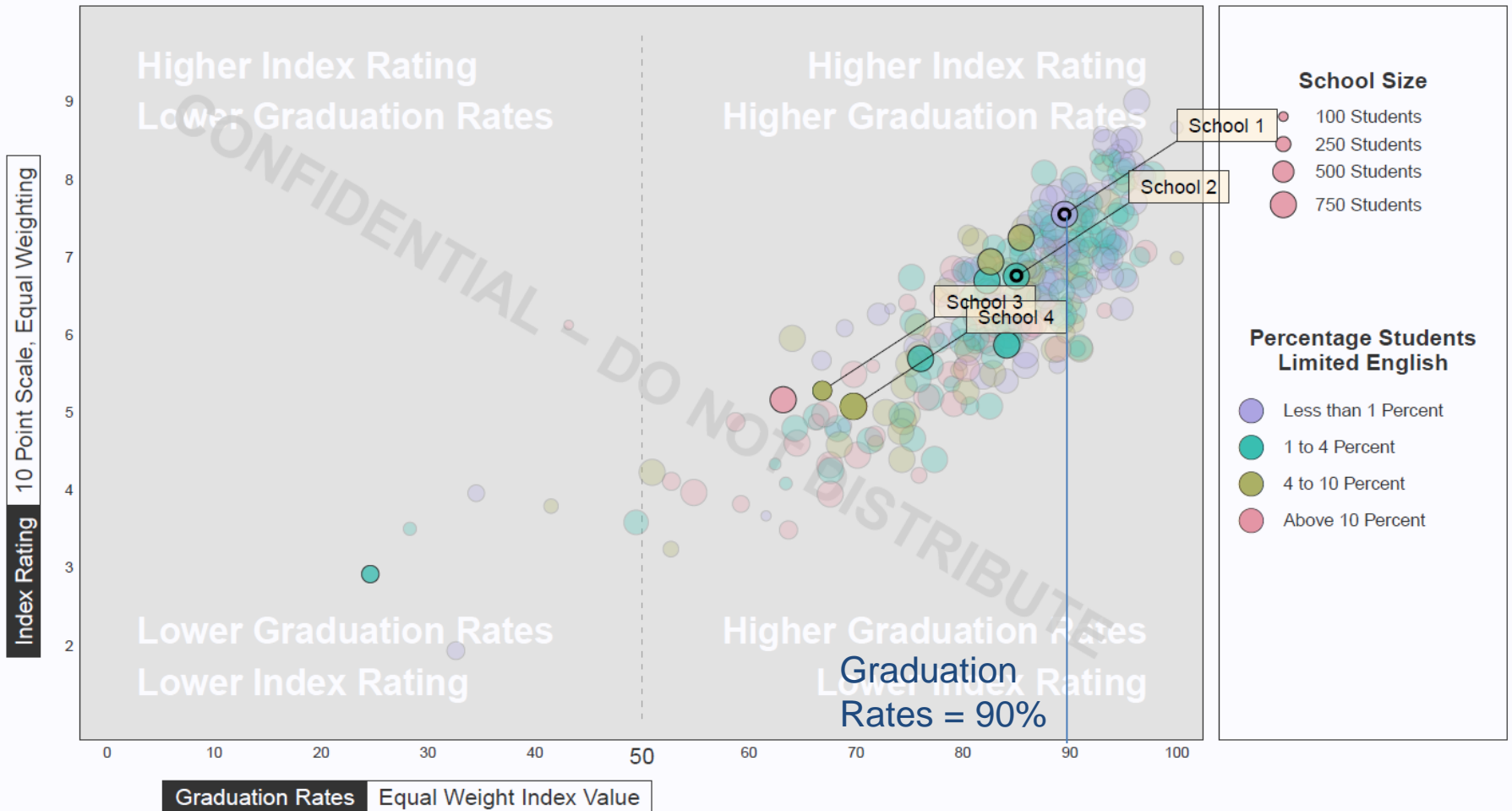
Achievement and Index Rating

Primary Schools Performance
Weighted Index Rating



Graduation Rates and Index

Secondary Schools Performance
Equal Weight Index Rating



Weighting Recommendation

	Elementaries & Middle Schools	High Schools
Proficiency	25%	33%
Student Growth Percentiles	75%	33%
Career and College Readiness	NA	33%
Total	100%	100%

Tier Labels – Option One

Maintain current system, adjusted to ten point scale.

Index Score	Tiers
7	Exemplary 5.5 - 7
6	
5	
5	Very Good 5 - 5.49
4	Good 4 - 4.99
3	Fair 2.5 - 3.99
2	
1	Struggling 1 - 2.49

Tier Labels – Option Two

Staff Recommendation.

Coherent, aligned system that marries the Index Tiers with federal categories.

Index Tiers	Federal System
Exemplary	Reward - top performing and top improving schools with no achievement gaps that are not closing
Very Good	to be determined
Good	to be determined
Fair	Emerging schools: next 5% and 10% on Priority and Focus lists
Struggling	Priority and Focus Schools: bottom 5% of All Students and bottom 10 % of individual subgroups

Tier Labels – Option Two Detail

Tier	Federal Category	% of Schools
Exemplary	Reward: <ul style="list-style-type: none"> Highest performing and highest improving schools based on “All Students” on the composite of the three performance indicators. These schools may not have significant achievement gaps that are not closing. 	Approx 15% of schools
Very Good	None	to be determined
Good	None	to be determined
Fair	Emerging: <ul style="list-style-type: none"> Next 5% of Title I schools from Priority list (see Priority below) AND non-Title I schools within the same performance band Next 10% of Title I schools from Focus list (see Focus below) AND non-Title I schools within the same performance band 	Approx 15% of schools
Struggling	Priority: <ul style="list-style-type: none"> Lowest 5% of Title I schools based on “All Students” on the composite of the three performance indicators AND non-Title I schools within the same performance band High schools with graduation rates <60% regardless of Title I status Focus: <ul style="list-style-type: none"> Lowest 10% of Title I schools based on subgroup on the composite of the three performance indicators AND non-Title I schools within the same performance band 	Approx 15% of schools