

# CEDARS Student Discipline Data

Achievement & Accountability Workgroup  
December 9, 2013



Deb Came, Ph.D.  
Director of Student Information  
Office of Superintendent of Public Instruction

# Student-level discipline data

- Began collecting in Comprehensive Education Data and Research System (CEDARS) in 2012-13
- Includes required data for federal reporting
- Data fields:
  - Incident date
  - Behavior type
  - Intervention applied
  - Intervention date and length
  - Interim Alternative Education Setting (IAES) for special education students

# CEDARS Discipline File

Behavior Types	
Bullying	Violence without major injury
Tobacco	Violence with major injury
Alcohol	Possession of a weapon
Illicit drugs	Marijuana (2013-14)
Fighting without major injury	Major bodily injury (2013-14)

# CEDARS Discipline File

## Intervention Type

Expulsion

Long-term suspension (more than 10 days)

Short-term suspension

No intervention

Other

# CEDARS Discipline File

Weapon Type	
Handgun	Knife or dagger
Rifle or shotgun	Other weapon
Multiple firearms	Firearm and other weapon
Other firearms	

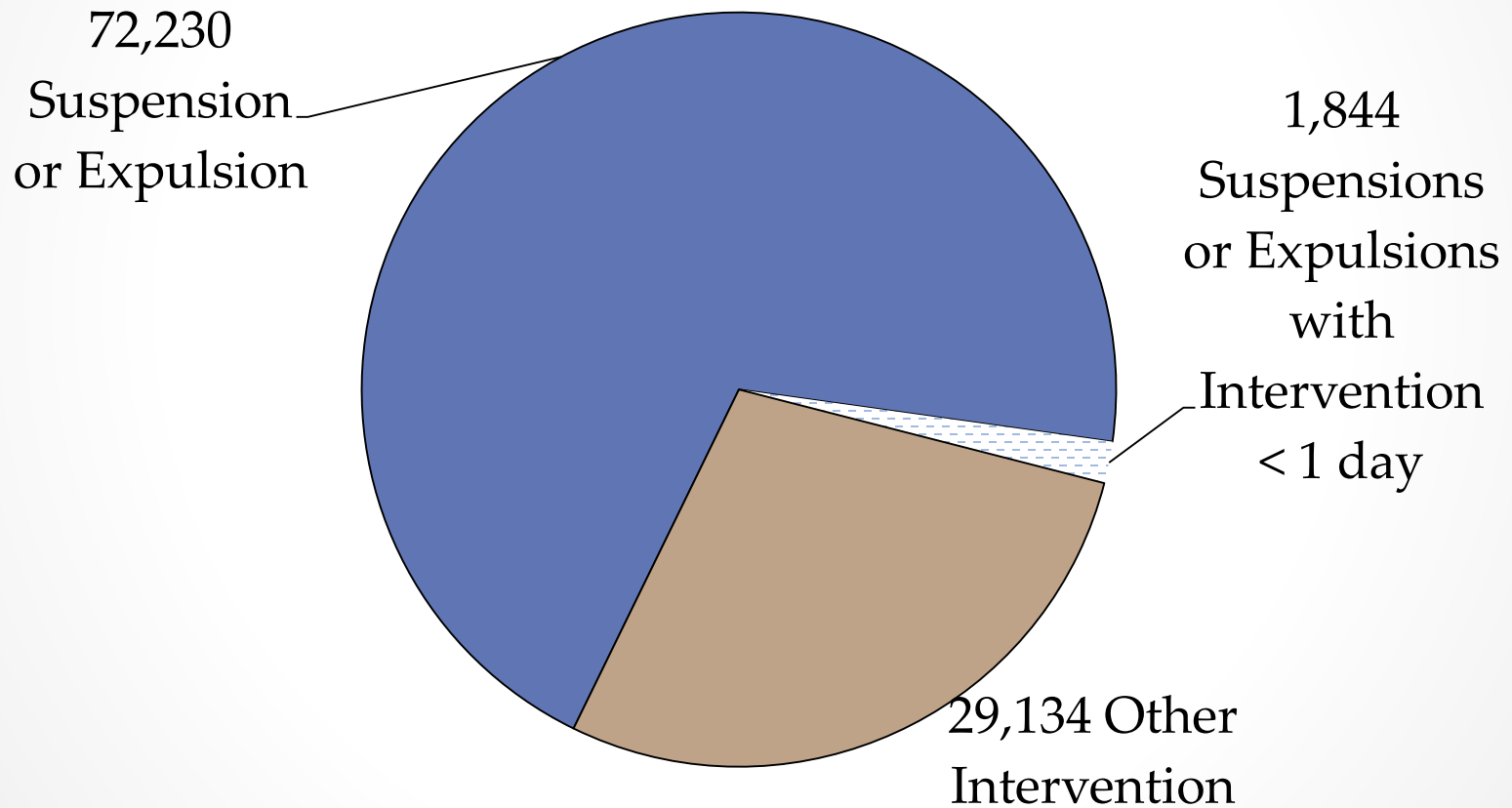
# CEDARS student-level discipline data

Sample:

- Wile E. Coyote
- Incident date: March 20, 2013
- Fighting without major injury
- Long-term suspension
- Intervention date: March 21, 2013
- 12 days
- Type of weapon: knife or dagger

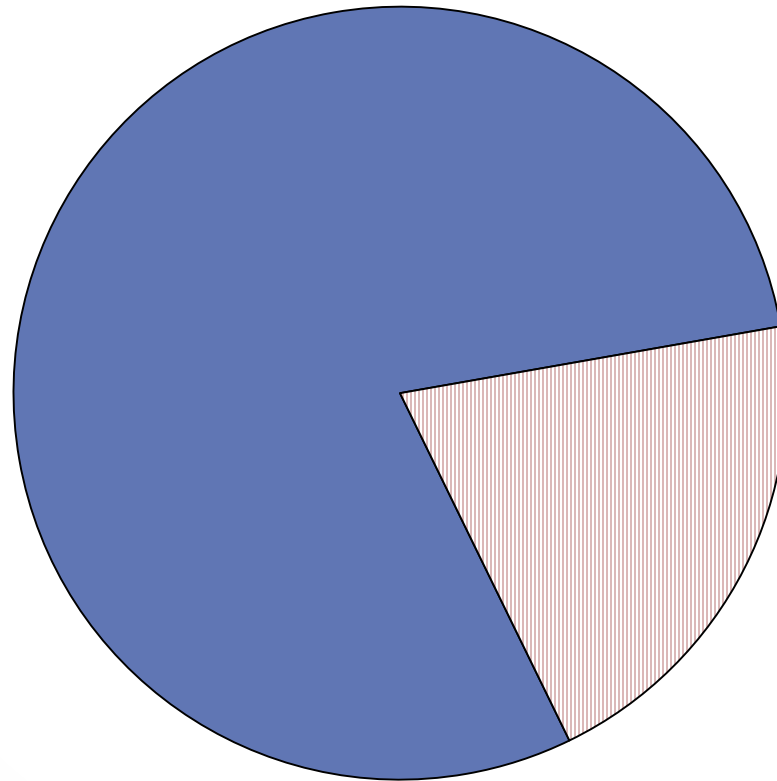


# 101,364 total incidents reported in 2012-13



# 59,806 students reported in incidents in 2012-13

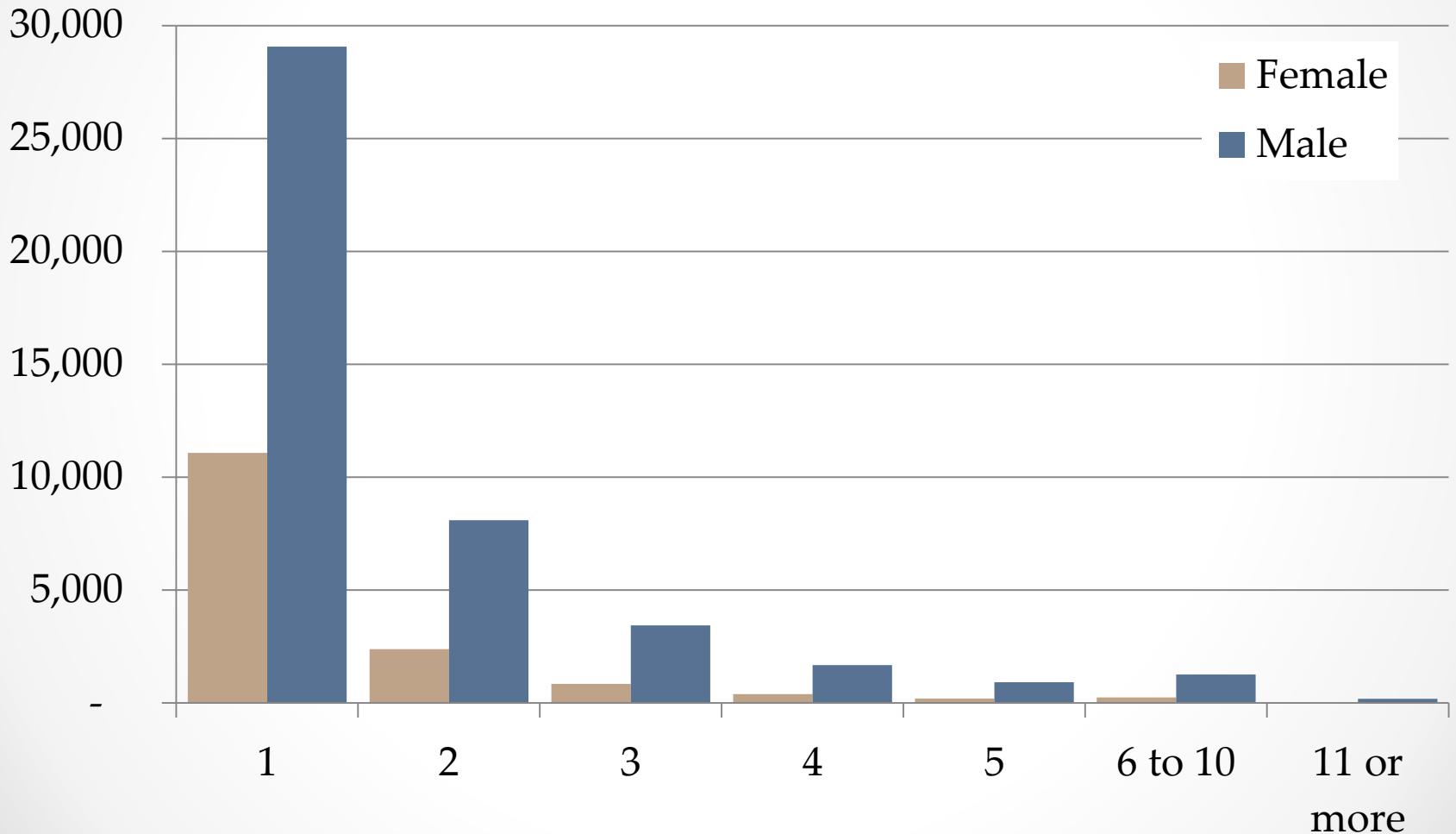
47,519  
Students in  
Incidents  
with  
Suspensions  
or Expulsions



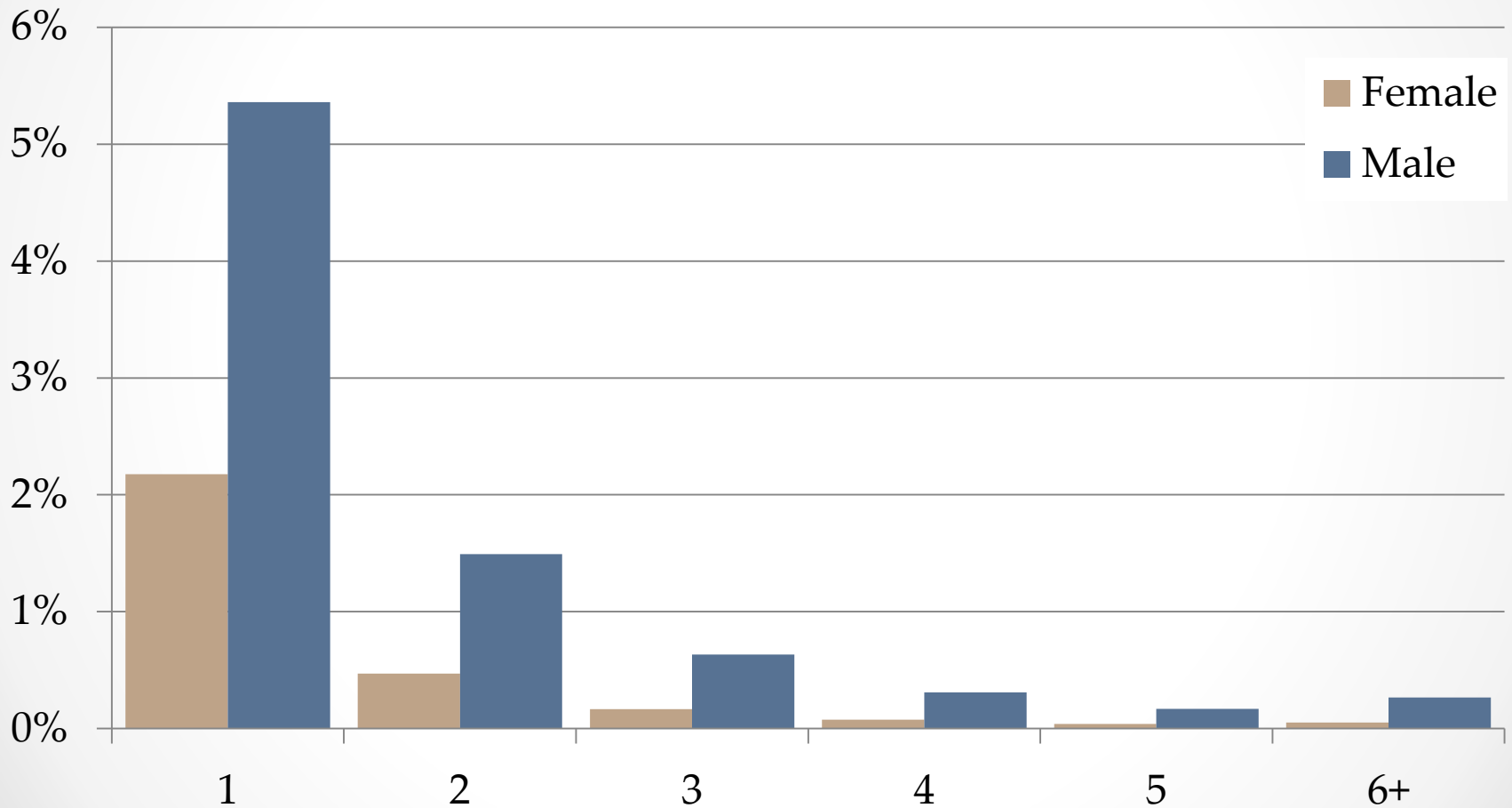
12,287  
Students in  
Incidents  
with Other  
Interventions



# Number of students by number of incidents

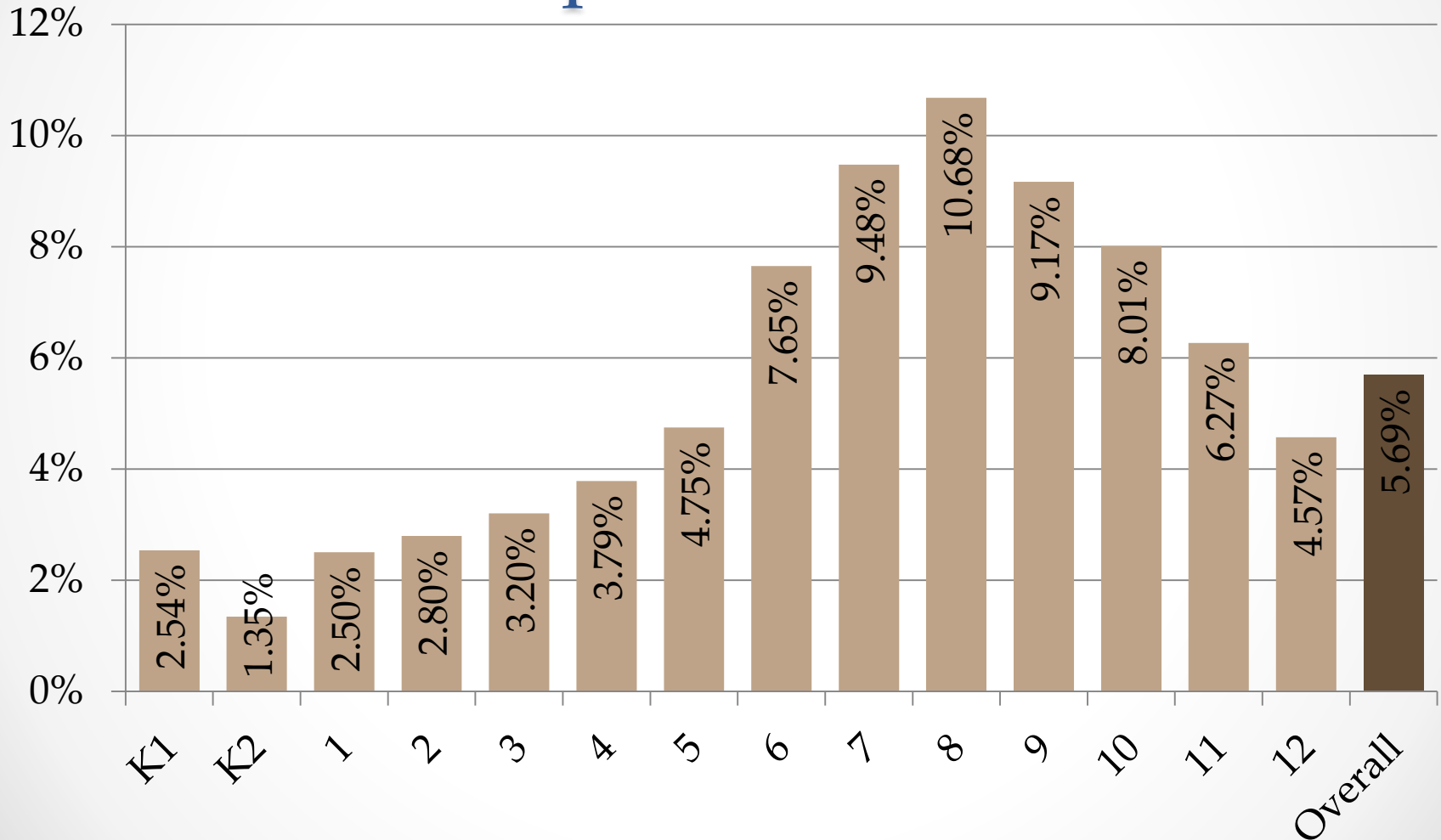


# Percent of students by number of discipline incidents

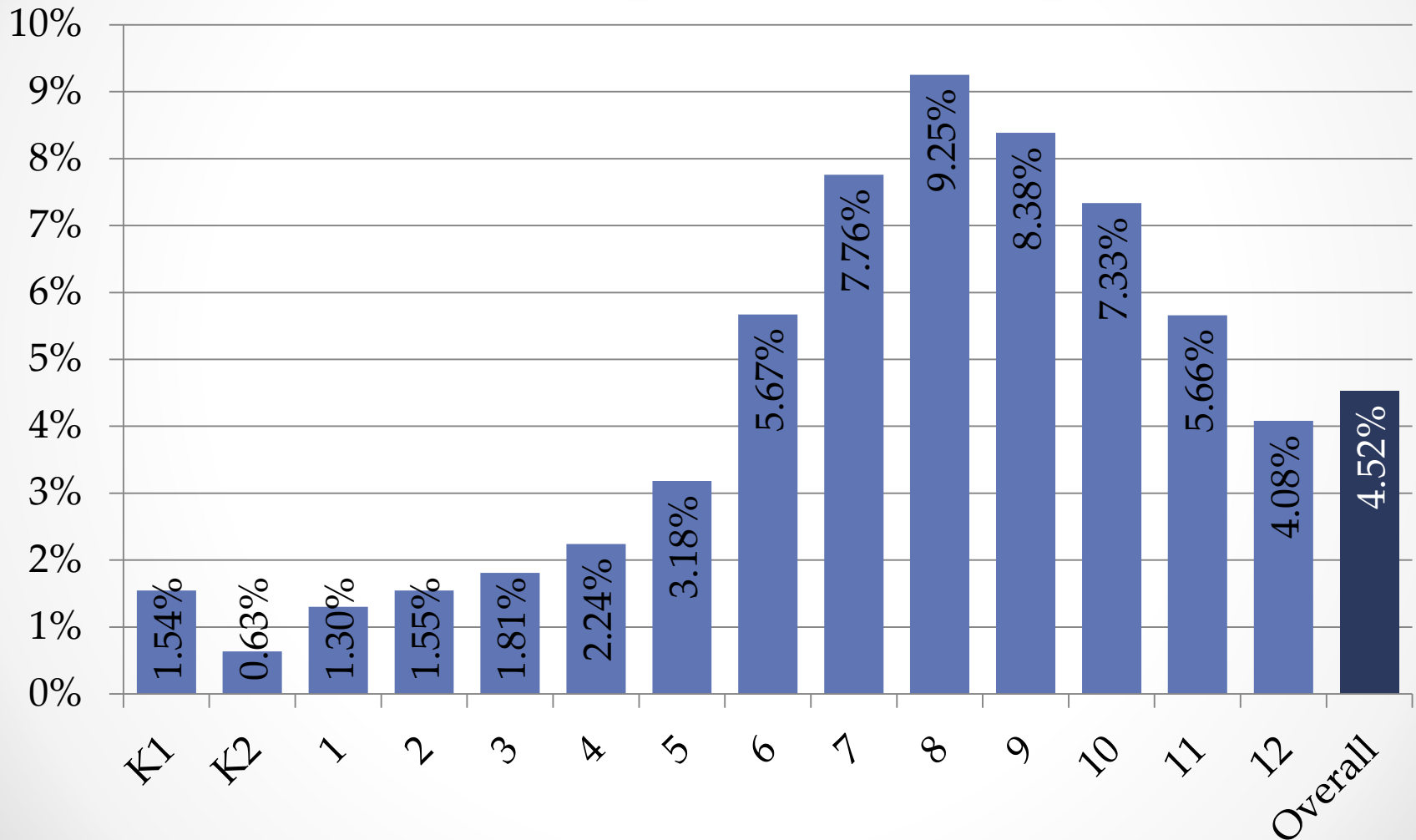


*5.7% of All Students were reported in one or more incidents  
(8.2% of Males and 3% of Females)*

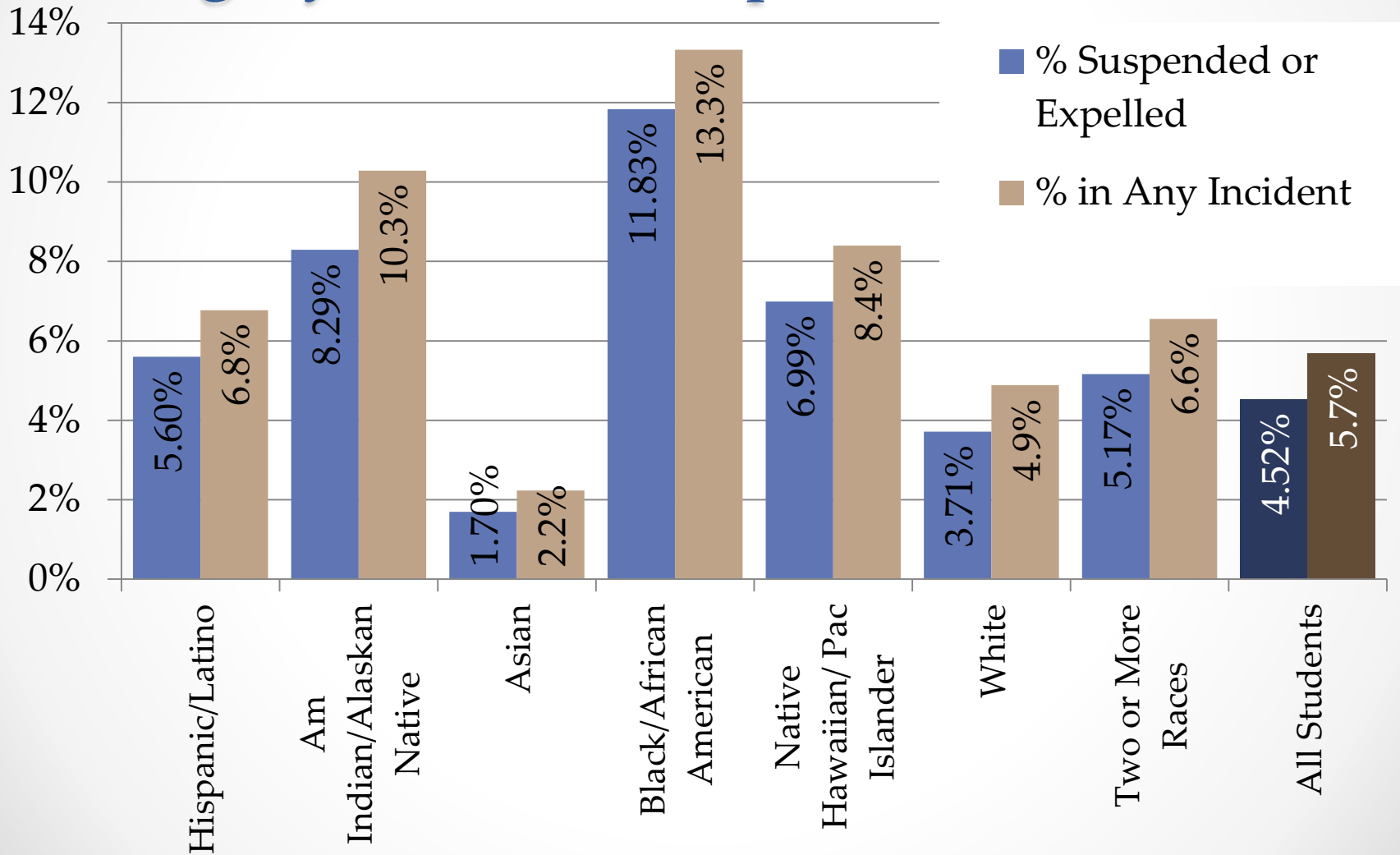
# Percent of students in each grade level who were reported in an incident



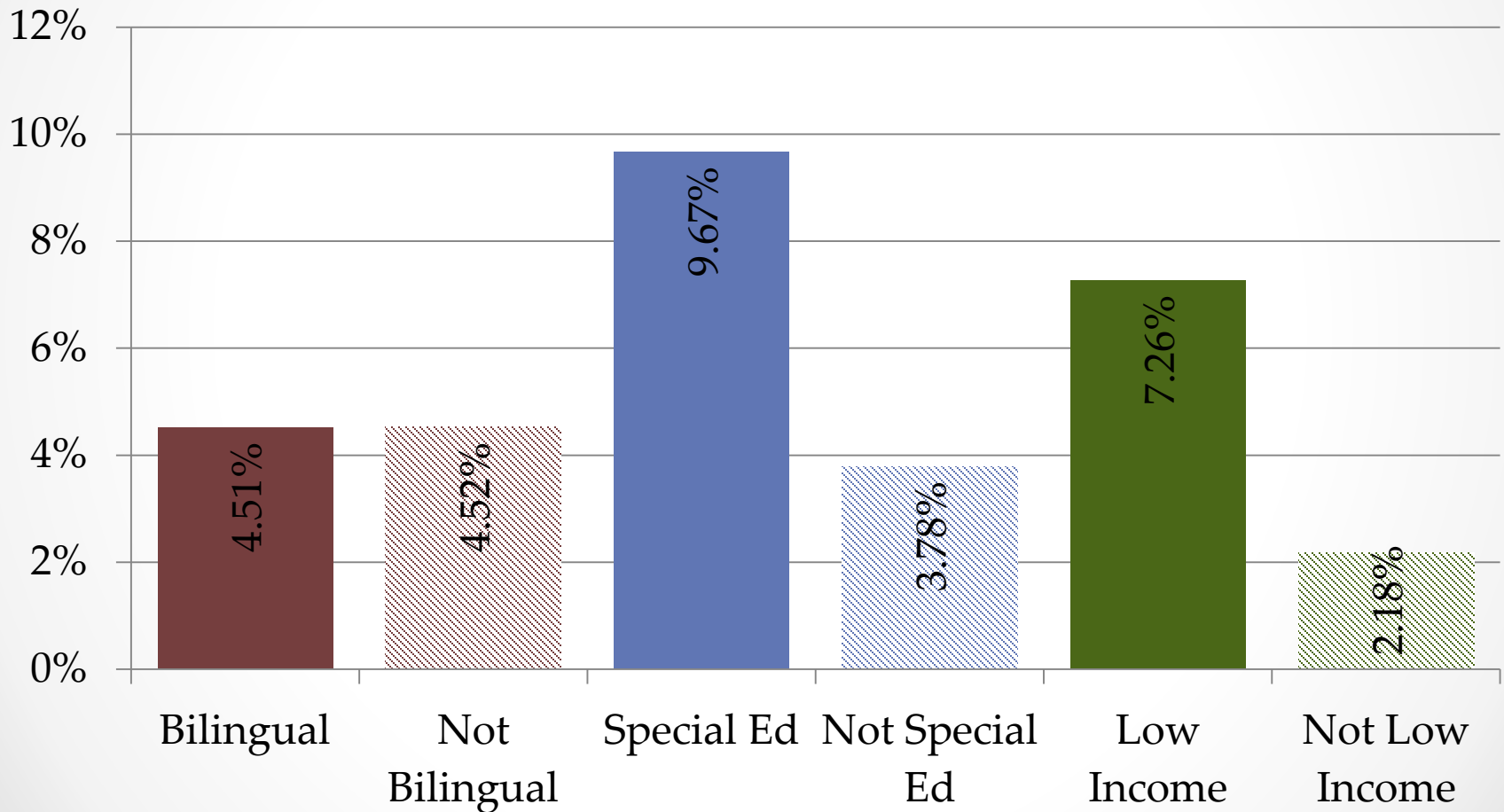
# Percent of students in each grade level who were suspended or expelled



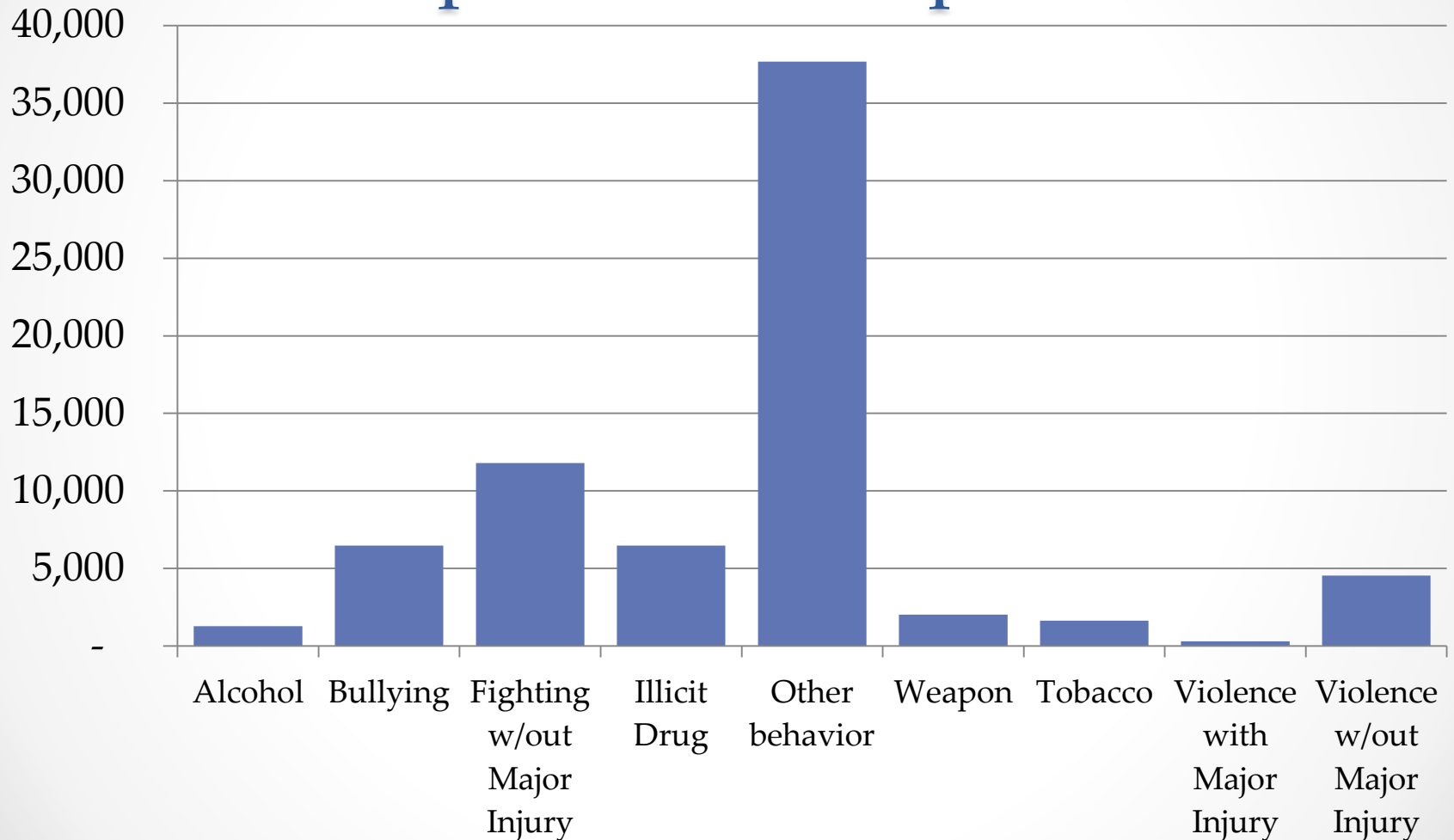
# Percent of students in each race / ethnicity category who were reported in incidents



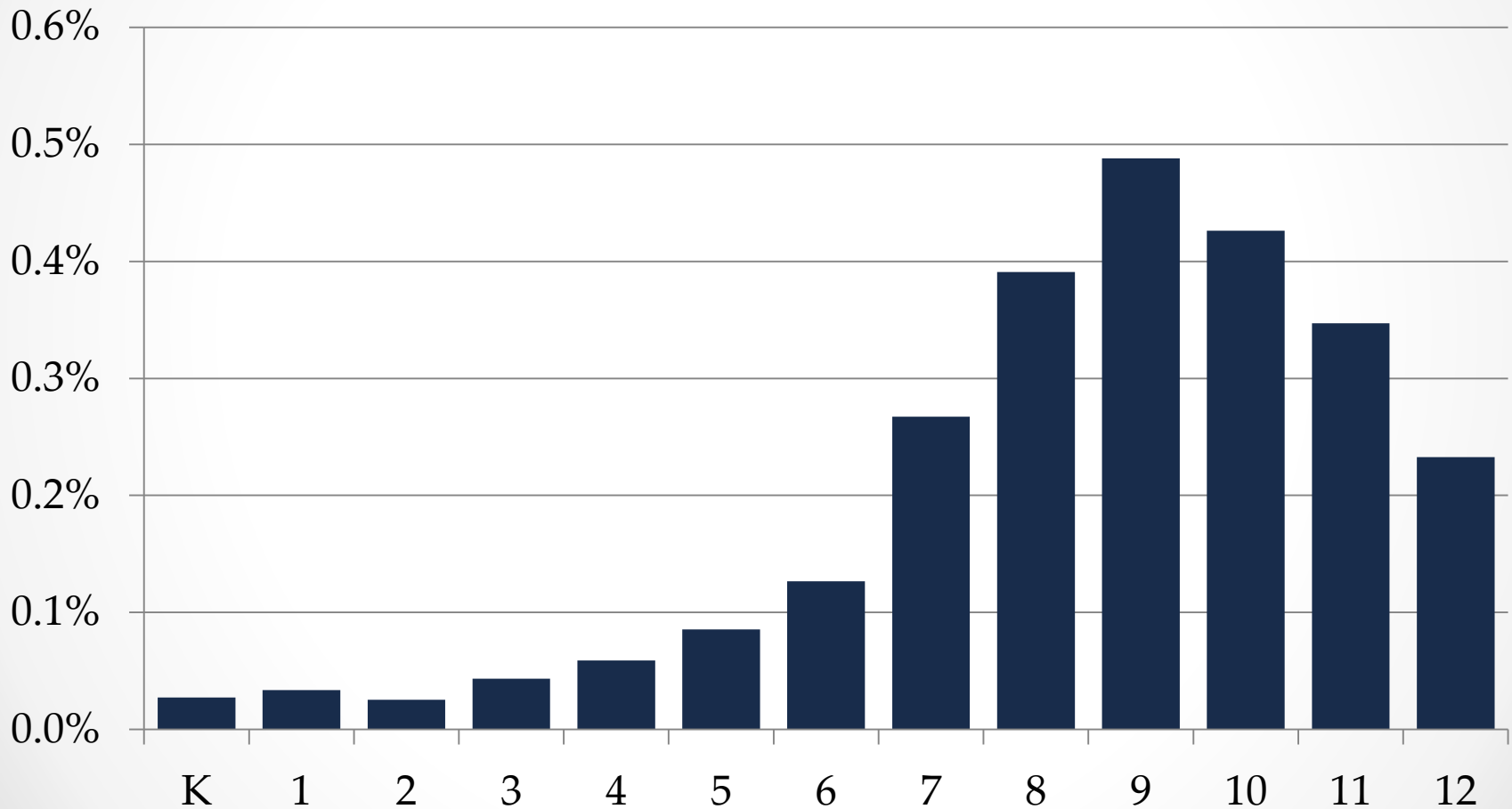
# Percent of students who were suspended or expelled



# Behaviors associated with a suspension or expulsion

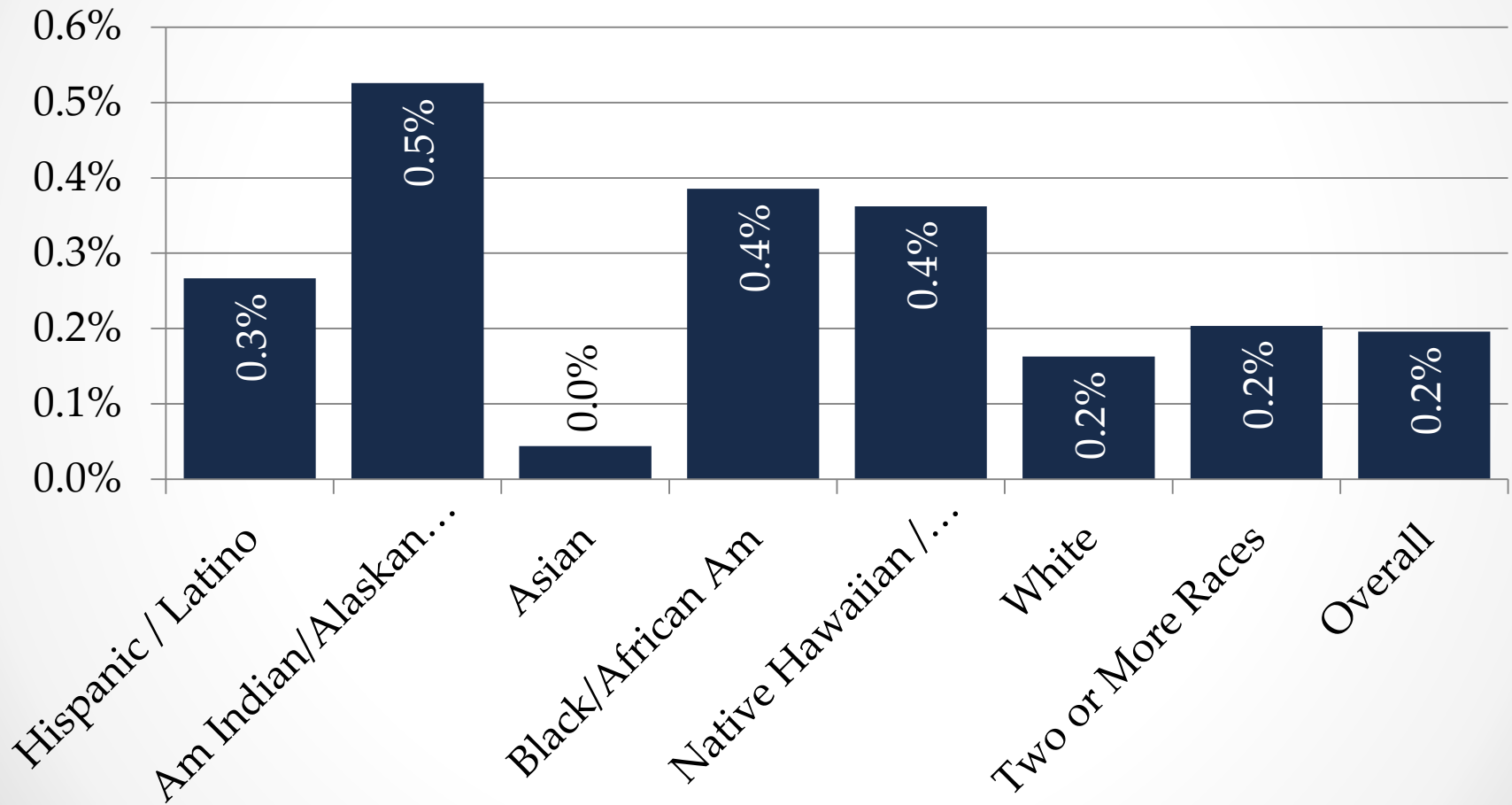


# Percent of students in each grade level who were expelled

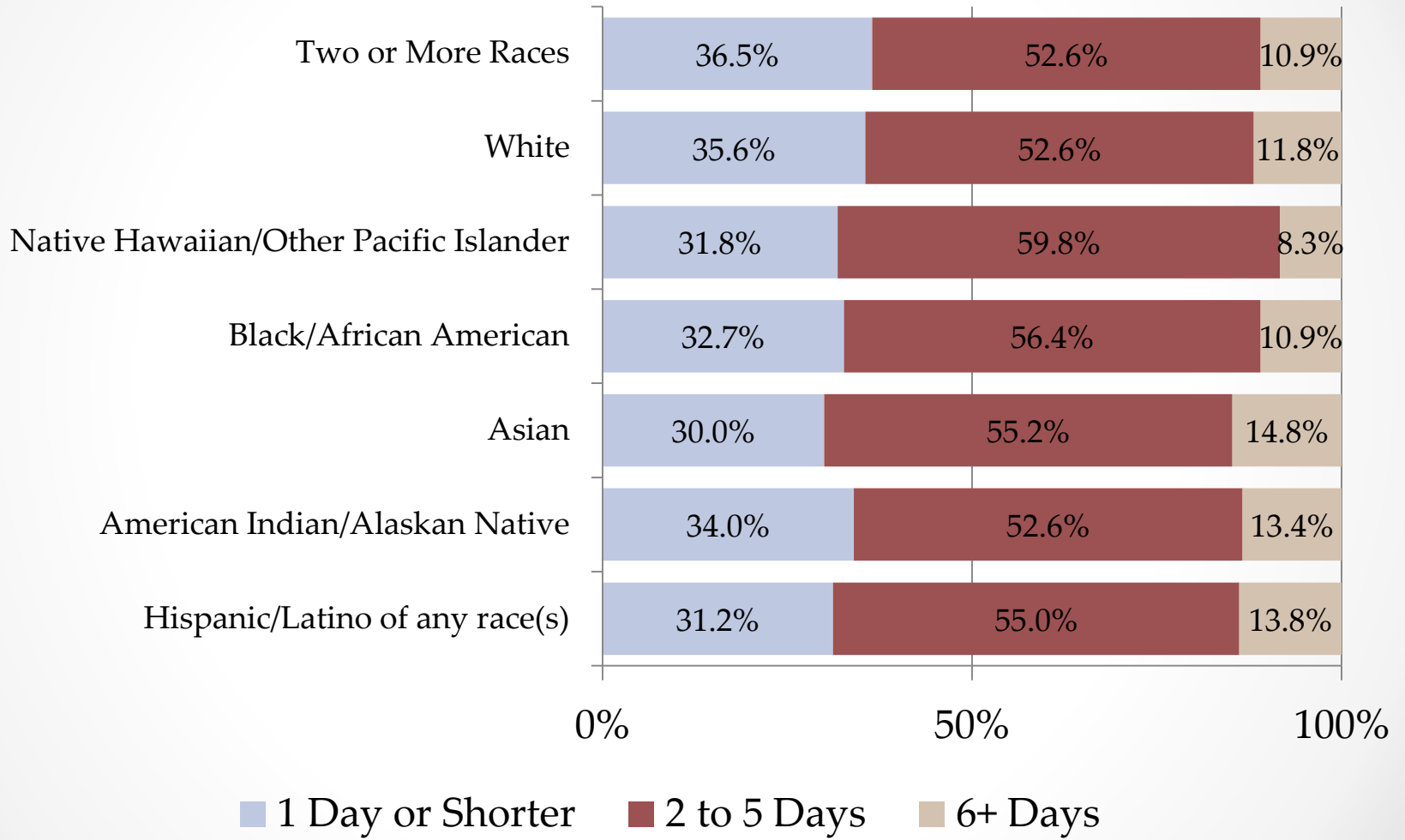




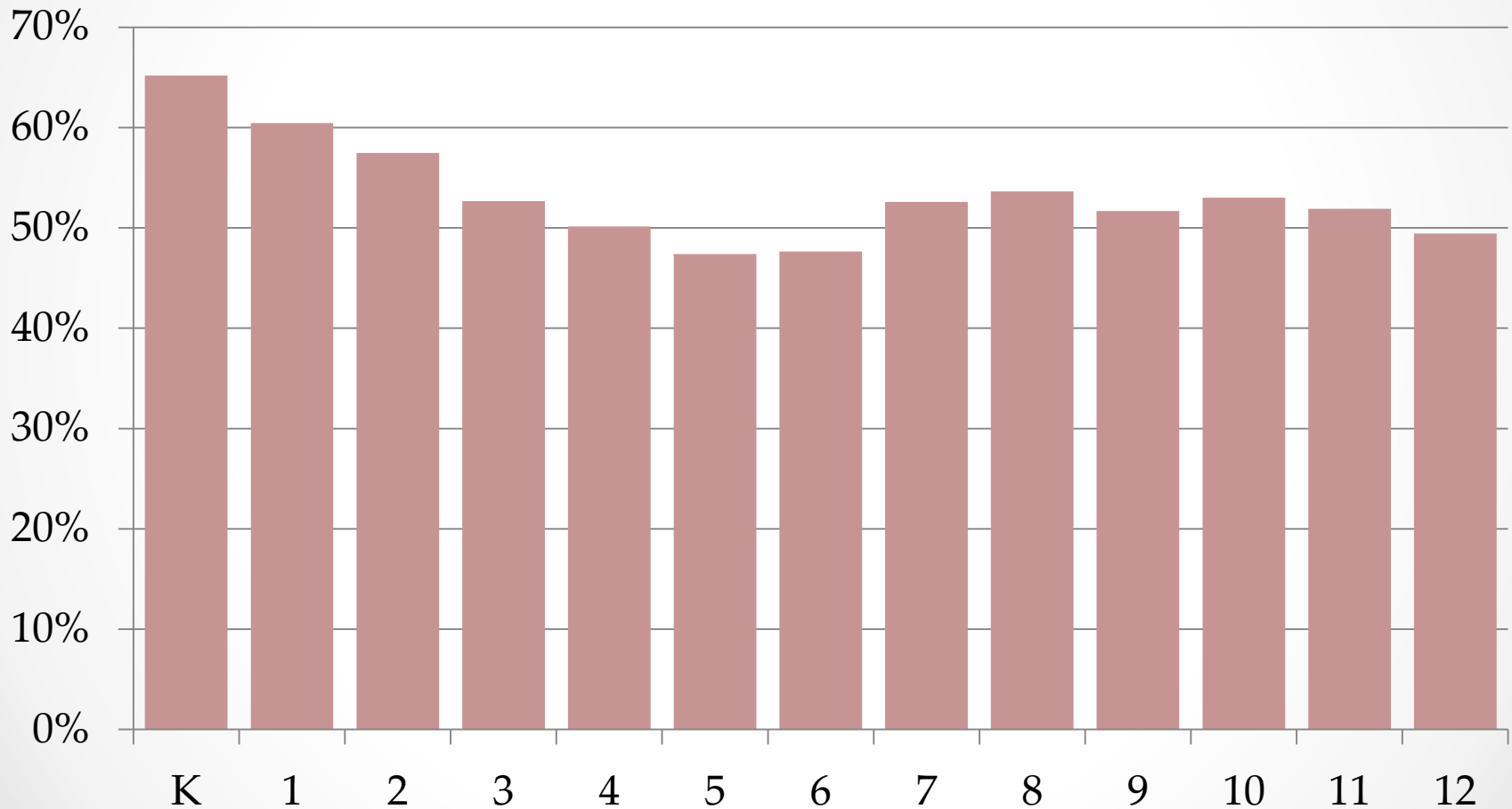
# Percent of students in each race/ ethnicity category who were expelled



# Length of Suspension



# Percent of Suspensions or Expulsions with “Other” Behavior





Deb Came, Ph.D.  
Director of Student Information  
Office of Superintendent of Public Instruction  
[Deb.Came@k12.wa.us](mailto:Deb.Came@k12.wa.us)

360.725.6356 (office)